



# ORGANIZATIONAL CHART & TELEPHONE DIRECTORY

This directory is designed to:

1. Give users direct access to the Department's top-level management and supervisory personnel, and
2. To see where the managers and supervisors fit into the Department's chain-of-command structure.

FOR AUTOMATED INSPECTION REQUESTS ONLY,  
YOU MAY CALL TOLL FREE FROM ANYWHERE  
IN LOS ANGELES COUNTY:

**1-888-LA-4-BUILD**

OR

OUTSIDE LOS ANGELES COUNTY

213-482-0000

TDD Line 888-833-8389

FOR ALL OTHER SERVICES OR INFORMATION WITHIN  
THE CITY OF LOS ANGELES

**3-1-1**

OR

OUTSIDE LOS ANGELES CITY

1-213-473-3231

*For more information regarding the Los Angeles Department of Building and Safety, please visit [www.ladbs.org](http://www.ladbs.org).*



**LADBS ADMINISTRATIVE/HEADQUARTER OFFICES  
201 NORTH FIGUEROA STREET, SUITE 1000  
LOS ANGELES, CALIFORNIA 90012**

**PERMIT/DEVELOPMENT SERVICES OFFICES**

- **DEVELOPMENT SERVICES CASE MANAGEMENT OFFICE**  
201 N. Figueroa Street, Suite 1030  
Los Angeles, CA 90012
- **METRO DEVELOPMENT SERVICES CENTER**  
201 N. Figueroa Street, 4<sup>th</sup> Floor Los Angeles, CA 90012  
Permit and Engineering Bureau Administration – 10<sup>th</sup> Floor  
Records Research and Express Permits – 1<sup>st</sup> Floor  
Plan Check – 4<sup>th</sup> Floor (Electrical and Mechanical)  
Electrical and Mechanical Engineering – 5<sup>th</sup> Floor  
Green Buildings – 5<sup>th</sup> Floor  
Disabled Access Appeals – 8<sup>th</sup> Floor  
Structural Engineering Research – 8<sup>th</sup> Floor  
Boards of Building and Safety Commissioners – 10<sup>th</sup> Floor  
Engineering Plan Check – 10<sup>th</sup> Floor
- **VAN NUYS DEVELOPMENT SERVICES CENTER**  
6262 Van Nuys Boulevard, 2<sup>nd</sup> Floor, Room 251  
Van Nuys, CA 91401
- **WEST LOS ANGELES DEVELOPMENT SERVICES CENTER**  
1828 Sawtelle Boulevard, 2<sup>nd</sup> Floor  
Los Angeles, CA 90025
- **SAN PEDRO DEVELOPMENT SERVICES CENTER**  
638 S. Beacon Street, 2<sup>nd</sup> Floor, San Pedro, CA 90731
- **SOUTH LOS ANGELES DEVELOPMENT SERVICES CENTER**  
1968 W. Adams Blvd.  
Los Angeles, CA 90018
- **TEST LAB**  
Electrical Testing Lab  
201 N. Figueroa Street, Suite 500, Los Angeles, CA 90012

Mechanical Testing Lab  
201 N. Figueroa Street, Suite 500, Los Angeles, CA 90012

**INSPECTION OFFICES**

- **INSPECTION BUREAU**  
221 N. Figueroa Street, 7<sup>th</sup>, 8<sup>th</sup> and 12<sup>th</sup> Floors  
Los Angeles, CA 90012  
Bureau Management – 8th Floor  
Commercial Inspection, Building Insp. Division - 7th Floor  
(Electrical, HVAC, Plumbing, Fire Sprinkler & Mechanical)  
Materials Control – 7th Floor  
Special Events – 7th Floor  
Investigations/Earthquake Safety/Hi-Rise Retrofit – 7th Floor  
Certified Licensing Contractor – 7th Floor  
Trade Licensing – 7th Floor  
Residential Inspection – 8th Floor  
Elevator and Pressure Vessels – 8th Floor  
Inspection Case Management – 8th Floor  
Restaurant and Small Business Express Program (RSBEP)  
– 8th Floor  
Inspections and Investigations – 8th Floor  
Training and Emergency Management Division – 8th Floor  
Grading and Engineering Inspection – 12th Floor
- **VAN NUYS INSPECTION DIVISION**  
6262 Van Nuys Boulevard, Ste. 200  
Van Nuys, CA 91401

19040 Vanowen Street  
Reseda, CA 91335  
Residential Inspection
- **WEST LOS ANGELES INSPECTION DIVISION**  
11620 Wilshire Boulevard, Suite 1100  
Los Angeles, CA 90025
- **SAN PEDRO COMMERCIAL & RESIDENTIAL INSPECTION DIVISIONS**  
638 S. Beacon Street, 2nd Floor  
San Pedro, CA 90731

**CODE ENFORCEMENT OFFICES**

- **CODE ENFORCEMENT BUREAU**  
221 N. Figueroa Street, 11<sup>th</sup> and 12<sup>th</sup> Floors  
Los Angeles, CA 90012

**CENTRAL REGION**  
Centralized Specialty Division – 11<sup>th</sup> Floor  
Administration and Liens – 11<sup>th</sup> Floor  
Pro Active Code Enforcement – 11<sup>th</sup> Floor  
Vacant Building Abatement – 11<sup>th</sup> Floor  
Signs-Enforcement & New – 11<sup>th</sup> Floor  
Off-Site Signs Program – 11<sup>th</sup> Floor  
General Code Enforcement – 11<sup>th</sup> Floor  
Annual Inspection Monitoring – 11<sup>th</sup> Floor  
Local Enforcement Agency – 12<sup>th</sup> Floor

2130 E. 1<sup>st</sup> Street – 4<sup>th</sup> Floor, Suite 2101  
Los Angeles, CA 90033

CEIS Development Team  
201 N. Figueroa Street, 9<sup>th</sup> Floor  
Los Angeles, CA 90012
- **NORTH REGION**  
Van Nuys City Hall  
14410 Sylvan Street, Suite 105  
Los Angeles, CA 91401
- **SOUTH REGION**  
1968 W. Adams Blvd.  
Los Angeles, CA 90018

4301 S. Central Avenue  
Los Angeles, CA 90011

221 N Figueroa Street, 11<sup>th</sup> Floor  
Los Angeles, CA 90012

7166 Manchester Avenue, Suite 10A  
Los Angeles, CA 90045

638 Beacon Street, Suite 276  
San Pedro, CA 90731

# TELEPHONE DIRECTORY INDEX

## DEPARTMENT OF BUILDING AND SAFETY

Executive and Bureau Management .....	Chart 1
Government and Community Relations Management .....	Chart 2
Development Services Case Management	
Case Management .....	Chart 3
Preliminary Review .....	Chart 3
LAX .....	Chart 3
Personnel Services .....	Chart 4

## PERMIT AND ENGINEERING BUREAU

Permit and Engineering Bureau Management .....	Chart 5
Structural Plan Check Division	
Metro Plan Check .....	Chart 6
Van Nuys District Office .....	Chart 6
West LA District Office .....	Chart 6
High-Rise and Seismic Retrofit Division	
Soft-Story Retrofit Program .....	Chart 7
High-Rise and Non-Ductile Concrete Buildings .....	Chart 7
Building Research .....	Chart 7
Structural Plan Check Counter Division	
Metro Plan Check .....	Chart 8
South LA District Office .....	Chart 8
Van Nuys District Office .....	Chart 8
West LA District Office .....	Chart 8
San Pedro District Office .....	Chart 8
Concierge Services .....	Chart 8
Green/Electrical/Mechanical (GEM) Plan Check Division	
Green Building Plan Check / Inspection .....	Chart 9
Mechanical Plan Check and Test Lab .....	Chart 9
Electrical Plan Check and Test Lab .....	Chart 9

## INSPECTION BUREAU

Commercial Building Inspection .....	Chart 10
Elevator and Pressure Vessel .....	Chart 10
Commercial Inspection .....	Chart 11
Plumbing, Heating and Fire Sprinkler / Electrical	
Residential Inspection .....	Chart 12
Metro / Van Nuys / West LA / San Pedro	
Grading Engineering and Inspection .....	Chart 12
Training and Emergency Management Division .....	Chart 12

## CODE ENFORCEMENT BUREAU

Citywide Signs Code Enforcement .....	Chart 13
General Enforcement and Annual Inspection Monitoring .....	Chart 13
Citywide Pro-Active Code Enforcement .....	Chart 13
Citywide Vacant Building Abatement and Foreclosure Registry Program .....	Chart 13
Environmental Affairs Division, Local Enforcement Agency .....	Chart 14

## RESOURCE MANAGEMENT BUREAU

Administrative Services Division .....	Chart 15
Financial Services Division .....	Chart 15
Risk and Records Management Division .....	Chart 15

## TECHNOLOGY SERVICES BUREAU

Project Management Division .....	Chart 16
Application Services Division .....	Chart 16
Operations and Infrastructure Division .....	Chart 16
BuildLA Office .....	Chart 16

DEPARTMENT OF BUILDING AND SAFETY

Chart 1

**FRANK M. BUSH**  
**GENERAL MANAGER**  
(213) 482-6800  
frank.bush@lacity.org

**GOVERNMENT & COMMUNITY  
RELATIONS / CODE STUDIES**  
CATHERINE NUEZCA-GABA, Director  
(213) 482-6800  
catherine.nuezcagaba@lacity.org  
(See Charts 2 & 3)

**EXECUTIVE OFFICER**  
**OSAMA YOUNAN**  
(213) 482-6800  
osama.younan@lacity.org

**PERSONNEL SERVICES**  
**GINA TERVALON**  
Personnel Director II  
(213) 482-6720  
gina.tervalon@lacity.org  
(See Chart 4)

**PERMIT AND ENGINEERING BUREAU**  
**VACANT**, Chief  
(213) 482-0440  
@lacity.org  
(See Charts 5, 6, 7, 8 & 9)

**RESOURCE MANAGEMENT BUREAU**  
**STEVE ONGELE**, Chief  
(213) 482-6703  
steve.ongele@lacity.org  
(See Chart 15)

**INSPECTION BUREAU**  
**PASCAL CHALLITA**, Chief  
(213) 482-6712  
pascal.challita@lacity.org  
(See Charts 10, 11 & 12)

**CODE ENFORCEMENT BUREAU**  
**JOHN BIEZINS**, Chief  
(213) 252-3902  
john.biezins@lacity.org  
(See Charts 13 & 14)

**TECHNOLOGY SERVICES BUREAU**  
**JENNIFER BANOS**, Chief  
(213) 482-0001  
jennifer.banos@lacity.org  
(See Chart 16)

**GOVERNMENT & COMMUNITY  
RELATIONS / CODE STUDIES**  
**CATHERINE NUEZCA-GABA, Director**  
 Asst Dep Sup of Bldg II  
 (213) 482-6805  
 catherine.nuezcagaba@lacity.org

**SPECIAL ASSISTANCE TO  
EXECUTIVE OFFICE**  
**ALDO UBAU**  
 Bldg Civil Engr I  
 (213) 482-6520  
 aldo.uba u@lacity.org

**CODE ENGINEER**  
**EUGENE BARBEAU**  
 Struc Engr Assc IV  
 (213) 482-0409  
 eugene.barbeau@lacity.org

**ZONING ENGINEER**  
**CHAD DOI**  
 Bldg Civil Engr I  
 (213) 482-6877  
 chad.doi@lacity.org

**DEVELOPMENT SERVICES  
CASE MANAGEMENT**  
**CHARMIE HUYNH**  
 Bldg Civil Engr II  
 (213) 482-6875  
 charmie.huynh@lacity.org

**BOARD OF BUILDING &  
SAFETY COMMISSIONERS**  
**DINA ELKINAWY**  
 Board Secretary  
 Struc Engr Assc III  
 (213) 482-0472  
 dina.elkinawy@lacity.org

**BUILD LA**  
**KAREN PENERA**  
 Project Manager  
 (213) 482-6749  
 karen.penera@lacity.org

**CAROLYNN JUACALLA**  
 Struc Engr Assc III  
 (213) 482-0096  
 carolynn.nepomuceno@lacity.org

**SUB-DIVISION**  
**Laura Duong**  
 Struc Engr Assc IV  
 (213) 482-0434  
 laura.duong@lacity.org

**VERONICA LOPEZ**  
 Struc Engr Assc II  
 (213) 482-7429  
 veronica.lopez@lacity.org

**ZONING LETTERS &  
OTHERS**  
**ERIC WONG**  
 Struc Engr Assc II  
 (213) 482-6876  
 eric.wong@lacity.org

**GOVERNMENT & COMMUNITY  
RELATIONS / CODE STUDIES**  
**CATHERINE NUEZCA-GABA, Director**  
 Asst Dep Sup of Bldg II  
 (213) 482-6805  
 catherine.nuezcagaba@lacity.org

**DEVELOPMENT SERVICES  
CASE MANAGEMENT**  
**CHARMIE HUYNH**  
 Bldg Civil Engr II  
 (213) 482-6875  
 charmie.huynh@lacity.org

**CASE MANAGEMENT**  
**CHAD DOI**  
 Build Civil Engr I  
 (213) 482-6877  
 chad.doi@lacity.org

**CLERICAL SUPPORT**  
**SARAH PULIDO**  
 Administrative Clerk  
 (213) 482-6864  
 sarah.pulido@lacity.org

**LAX**  
**LILY TENG**  
 Build Civil Engr I  
 (213) 473-2146  
 lily.teng@lacity.org

**CASE MANAGEMENT**  
**JOHN FRANCIA**  
 Struc Engr Assc IV  
 (213) 482-0010  
 john.franCIA@lacity.org

**PRELIMINARY REVIEW  
METRO**  
**GARO TELMI**, Struc Engr Assc IV  
 (213) 482-0416 – garo.telmi@lacity.org  
**SALVADOR QUINTANILLA (RESTAURANT  
PRELIM)**, Struc Engr Assc II  
 (213) 482-0471 – salvador.quintanilla@lacity.org  
**VAN NUYS/WEST LA**  
**RUDOLF K. MELIKOFF**, Struc Engr Assc III  
 (818) 374-4332 – rudoIf.kinar-melikoff@lacity.org

**Permit and Engineering Coordinators\*\*\***  
**EDUARDO RODRIGUEZ**, Struc Eng Assc IV  
 (213) 473-2147 – eduardo.rodriguez@lacity.org  
**MARK WANG**, Mech Eng Assc IV  
 (213) 473-2144 – mark.wang@lacity.org  
**MEHDI ZANDI**, Elec Eng Assc IV  
 (213) 473-2145 – mehdi.zandi@lacity.org

**CASE MANAGERS**  
**LAWRENCE QUIRANTE**, Struc Engr Assc III  
 (213) 482-0444 – lawrence.quirante@lacity.org  
**RODOLFO ARIAS**, Struc Engr Assc III  
 (213) 482-6865 – roddfo.arias@lacity.org  
**ALBERT SERVIN**, Struc Engr Assc II  
 (213) 482-7339 – albert.servin@lacity.org  
**JOE VO**, Struc Engr Assc II  
 (213) 482-6870 – joed.vo@lacity.org

**NON-LADBS CASE MANAGERS\***

**Inspection Coordinators\*\***  
**TIM GRIFFITH**, Sr Build Inspector  
 (213) 473-2153 – tim.griffith@lacity.org  
**ALBERT COMISARI**, Build Inspector  
 (213) 473-2453 – albert.comisari@lacity.org  
**ERIC BANE**, Sr Electrical Inspector  
 (213) 473-2150 – eric.bane@lacity.org  
**CHRIS NORRIS**, Sr HVAC Inspector  
 (213) 473-2142 – christopher.norris@lacity.org  
**PRESTON GILLIARD**, Sr Plumbing Inspector  
 (213) 473-2151 – preston.gilliard@lacity.org  
**GUADALUPE TOLEDO**, Fire Sprinkler Inspector  
 (213) 473-2143 – guadalupe.toledo@lacity.org

**DCP CASE MANAGERS**  
**SARAH MOLINA-PEARSON**, Sr City Planner  
 (213) 482-0376 – sarah.molina-pearson@lacity.org  
**KIT AWAKUNI**, City Planner  
 (213) 482-0441 – kit.awakuni@lacity.org  
**SUSAN ZERMENO**, City Planner  
 (213) 482-7073 – susan.zermeno@lacity.org  
**JUSTON BILOW**, City Planning Assc  
 (213) 482-7083 – justin.bilow@lacity.org  
**BRIAN CARR**, City Planning Assistant  
 brian.r.carr@lacity.org

**LAFD CASE MANAGERS METRO**  
**DOMINIQUE MEDINA**, Fire Prot Engr Assc II  
 (213) 482-6930 – dominique.medina@lacity.org  
**ANDREW KO**, Fire Prot Engr Assc IV  
 (213) 482-6907 – andrew.ko@lacity.org  
**LAFD CASE MANAGER VAN NUYS**  
**OSCAR SALGADO**, Fire Prot Engr Assc I  
 (818) 374-4352 – oscar.salgado.jr@lacity.org

**DOT CASE MANAGER**  
**TAIMOUR TANAVOLI**, Trans Engr Assc III  
 (213) 482-7024 - taimour.tanavoli@lacity.org

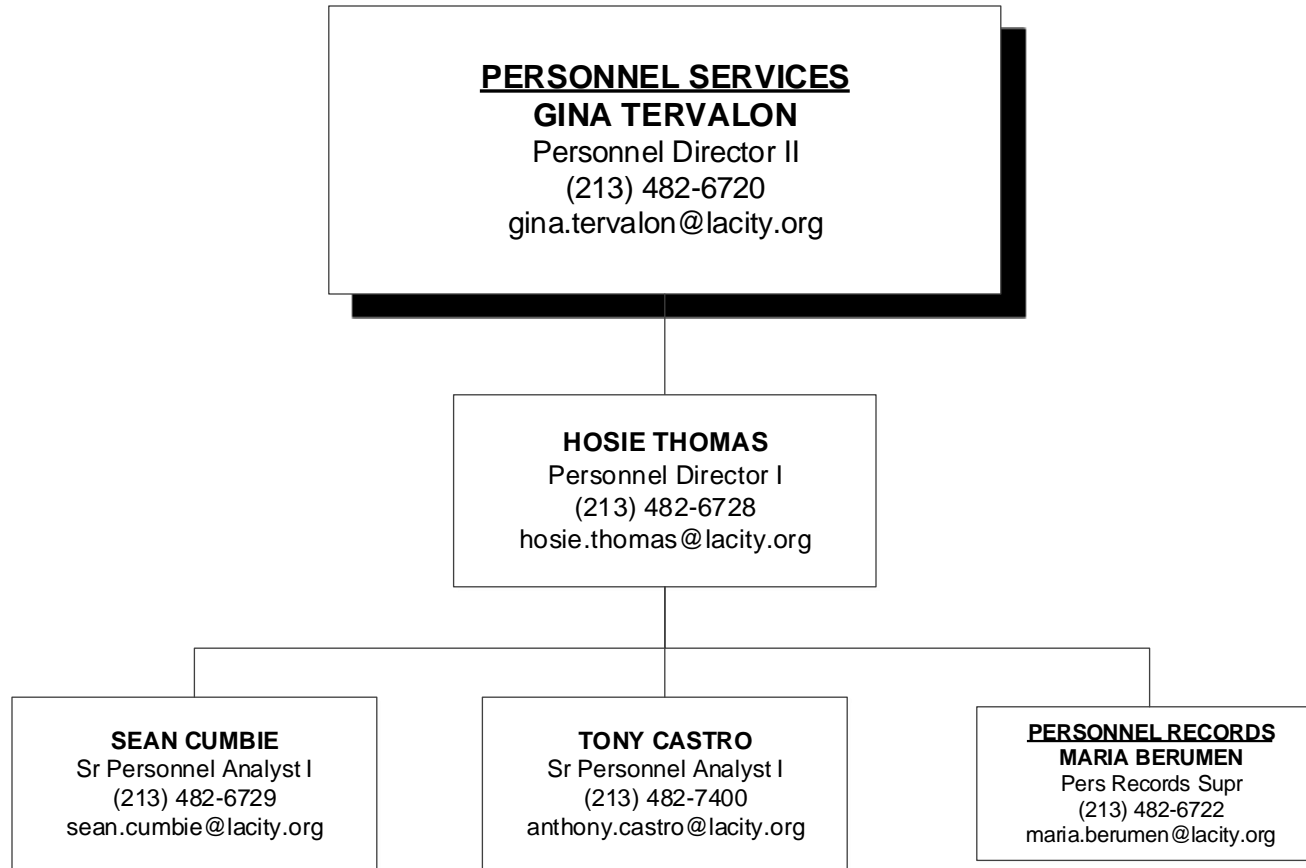
**BOE CASE MANAGER**  
**CARL MILLS**, Civil Engineer  
 (213) 482-6701 - carl.mills@lacity.org

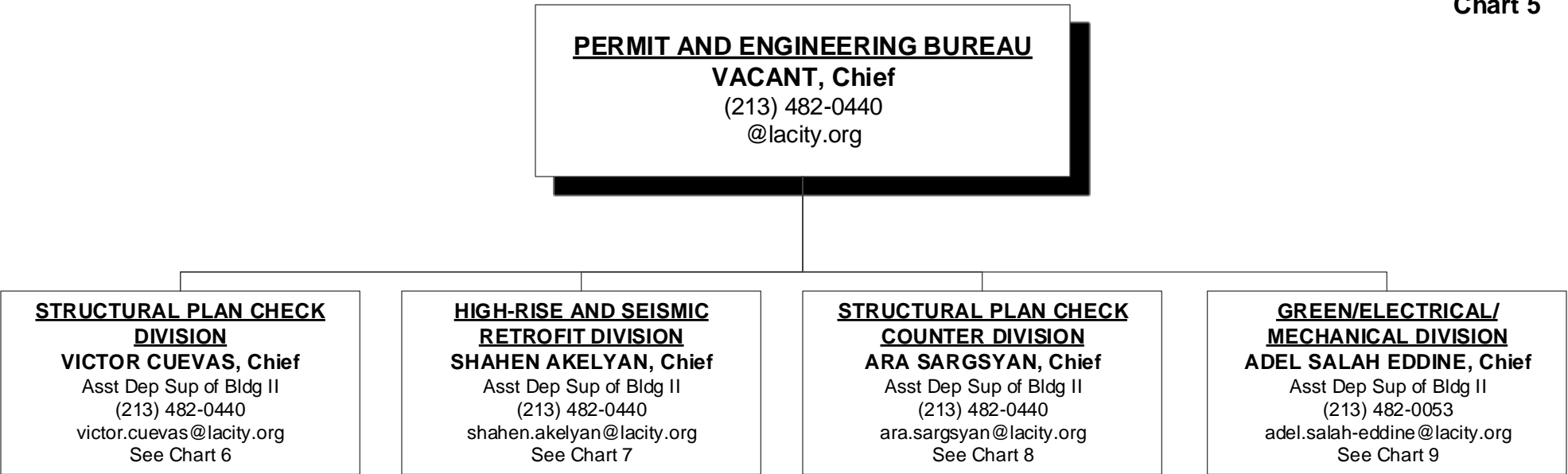
**DWP CASE MANAGER**  
**SHIRIN FRIEDLANDER**, Elect Engineer  
 (213) 367-2942 - shirin.friedlander@ladwp.org

\* Non-LADBS employees assigned to Development Services Case Management but report to their respective department management.

\*\*Reporting to Inspection Bureau

\*\*\*Reporting to Permit and Engineering Bureau



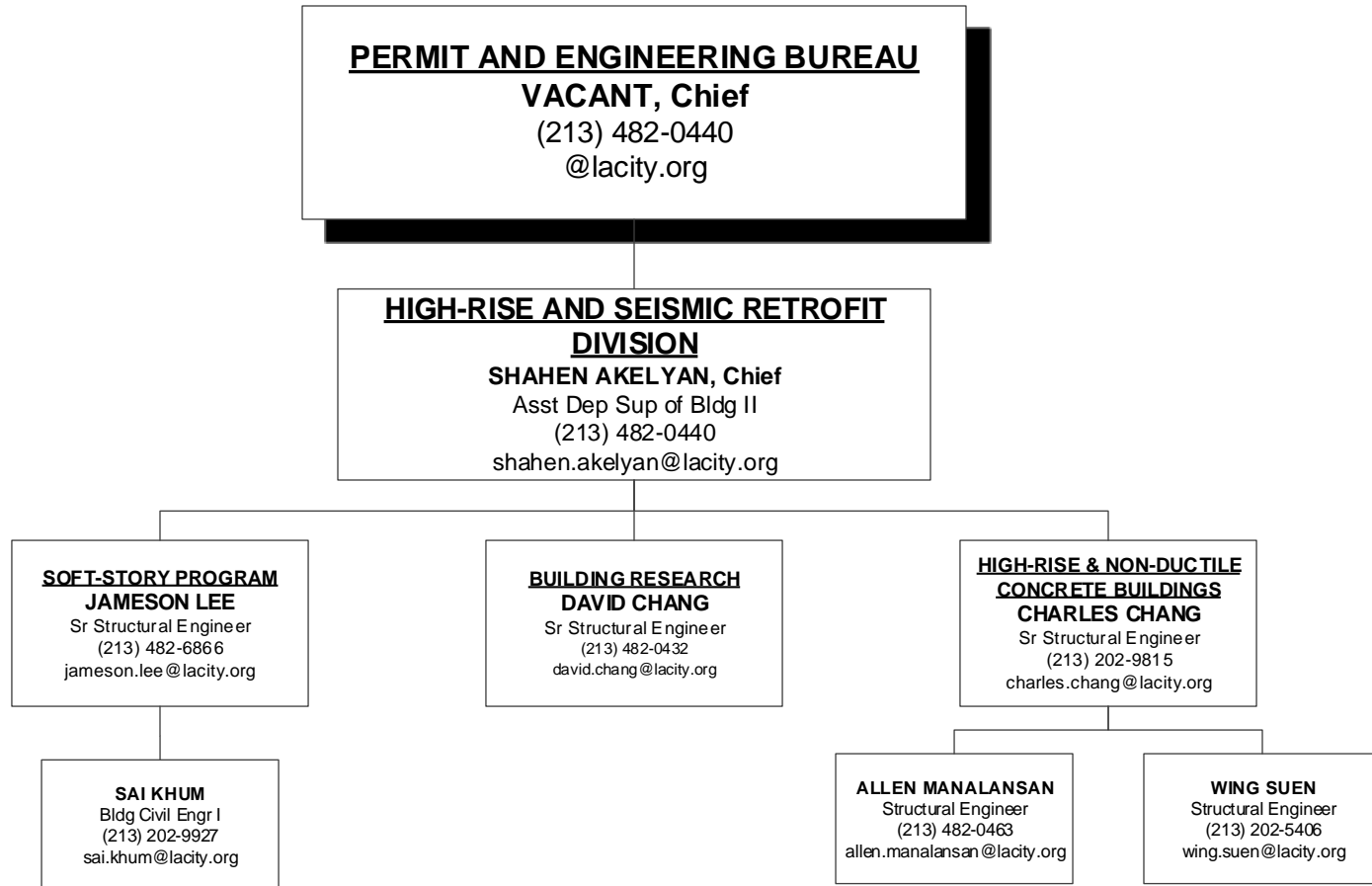




**PERMIT AND ENGINEERING BUREAU**  
**VACANT, Chief**  
 (213) 482-0440  
 @lacity.org

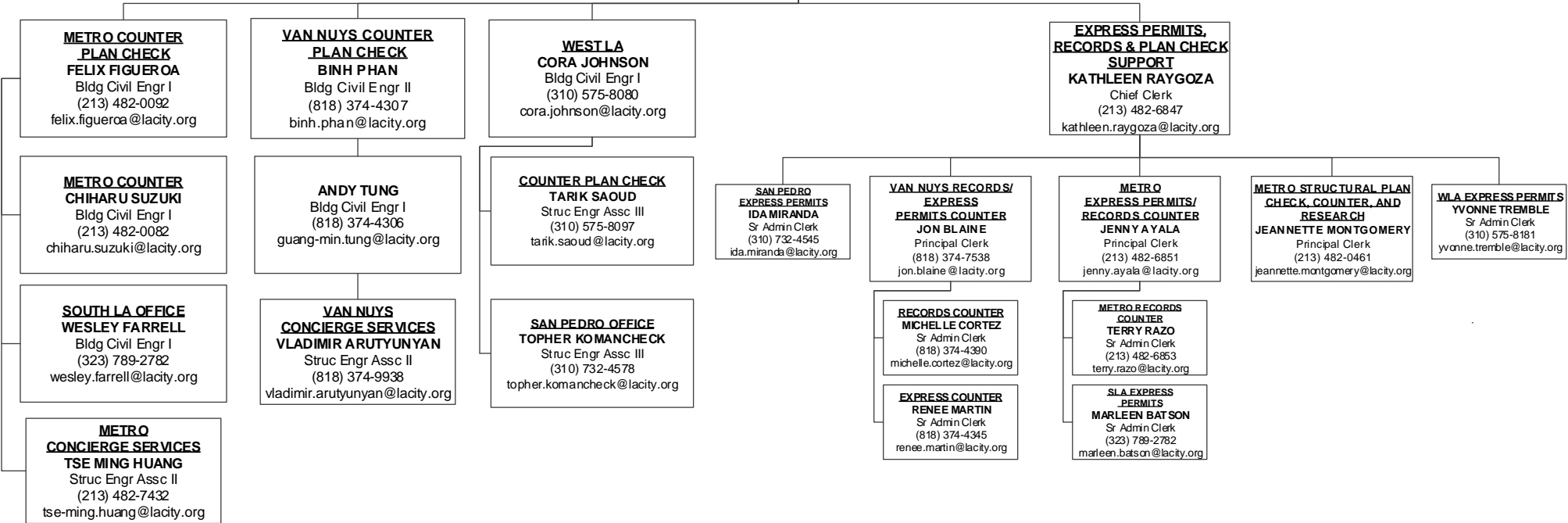
**STRUCTURAL PLAN CHECK DIVISION**  
**VICTOR CUEVAS, Chief**  
 Asst Dep Sup of Bldg II  
 (213) 482-0440  
 victor.cuevas@lacity.org





**PERMIT AND ENGINEERING BUREAU**  
**VACANT, Chief**  
 (213) 482-0440  
 @lacity.org

**STRUCTURAL PLAN CHECK COUNTER DIVISION**  
**ARA SARGSYAN, Chief**  
 Asst Dep Sup of Bldg II  
 (213) 482-0440  
 ara.sargsyan@lacity.org



**PERMIT AND ENGINEERING BUREAU**  
**VACANT, Chief**  
 (213) 482-0440  
 @lacity.org

**GREEN, ELECTRICAL & MECHANICAL DIVISION**  
**ADEL SALAH EDDINE**  
 Asst Dep Sup of Bldg II  
 (213) 482-0053  
 adel.salah-eddine@lacity.org

**GREEN BUILDING**  
**SYED ALI**  
 Bldg Civil Engr II  
 (213) 202-3450  
 syed.ali@lacity.org

**MECHANICAL PLAN CHECK**  
**DOMENICO BARBATO**  
 Bldg Mech Engr II  
 (213) 482-0410  
 domenico.barbato@lacity.org

**ELECTRICAL PLAN CHECK**  
**VACANT**  
 Bldg Elec Engr II  
 (213) 482-7309  
 @lacity.org

**METRO ELECTRICAL PC Cntr/Testlab/EBEWE/LAX**  
**NABIL MAALOUF**  
 Bldg Elec Engr II  
 (213) 482-0052  
 nabil.maalouf@lacity.org

**GREEN BLDG PLAN CHECK**  
**SEAN DANG**  
 Bldg Civil Engr I  
 (213) 202-3427  
 sean.dang@lacity.org

**METRO MECHANICAL PLAN CHECK**  
**MIKE SHAHRESTANI**  
 Mech Engr Assc IV  
 (213) 482-6940  
 mike.shahrestani@lacity.org

**VAN NUYS MECHANICAL PLAN CHECK & COUNTER**  
**GREG ARBUCKLE**  
 Mech Engr Assc III  
 (818) 374-4372  
 gregory.arbuckle@lacity.org

**VAN NUYS ELECTRICAL PLAN CHECK & COUNTER**  
**ELIE MAALOUF**  
 Bldg Elec Engr I  
 (818) 374-4343  
 elie.maalouf@lacity.org

**ELECTRICAL TEST LAB**  
**BEHROOZ HOORIANI**  
 Elec Engr Assc IV  
 (213) 482-0045  
 behrooz.hooriani@lacity.org

**VAN NUYS**  
**MICHAEL SCOTT AYERS**  
 Struc Engr Assc IV  
 (818) 374-4308  
 michaelscott.ayers@lacity.org

**METRO & WLA PLAN CHECK**  
**DONALD CRICHLAW**  
 Sr Bldg Mech Insp  
 (213) 202-3410  
 donald.crichlow@lacity.org

**METRO MECHANICAL PLAN CHECK COUNTER**  
**MANUEL HERNANDEZ**  
 Mech Engr Assc III  
 (213) 202-2791  
 manuel.hernandez@lacity.org

**METRO ELECTRICAL PLAN CHECK**  
**FRANCIS YSAGUIRRE**  
 Elec Engr Assc IV  
 (213) 482-0064  
 francis.ysaguirre@lacity.org

**METRO ELECTRICAL PLAN CHECK COUNTER**  
**FRANCIS YSAGUIRRE**  
 Elec Engr Assc IV  
 (213) 482-0064  
 francis.ysaguirre@lacity.org

**WEST LA**  
**RICHARD GARCIA**  
 Struc Engr Assc II  
 (310) 575-8095  
 richard.garcia@lacity.org

**METRO PLAN CHECK**  
**NEGAR NEJAD**  
 Struc Engr Assc II  
 (213) 482-0436  
 negar.nejad@lacity.org

**METRO MECHANICAL PLAN CHECK (LAX)**  
**MARK WANG**  
 Mech Engr Assc III  
 (213) 482-0439  
 mark.wang@lacity.org

**MECHANICAL TEST LAB**  
**IRENE POOL TAMAYO**  
 Mech Engr Assc III  
 (213) 482-0065  
 irene.pool.tamayo@lacity.org

**VN PLAN CHECK**  
**DAVE MATSON**  
 Sr Bldg Mech Insp  
 (818) 374-9989  
 dave.matson@lacity.org

**METRO MECHANICAL PLAN CHECK**  
**RWAND ARYAN**  
 Mech Engr Assc III  
 (213) 482-0406  
 rawand.aryan@lacity.org

**METRO ELECTRICAL PLAN CHECK (LAX)**  
**MEHDI ZANDI**  
 Elec Engr Assc IV  
 (213) 482-7114  
 mehdi.zandi@lacity.org

**INSPECTION BUREAU**  
**PASCAL CHALLITA, Chief**  
 (213) 482-6712  
 pascal.challita@lacity.org  
**JOHN WEIGHT, Assistant Chief**  
 (213) 482-0342  
 john.weight@lacity.org

**BUILDING INSPECTION/INSPECTION CASE MANAGEMENT (ICM)/ RESTAURANT & SMALL BUSINESS EXPRESS PROGRAM (RSBEP)**  
**JAMES GARRISON**  
 Chief Inspector  
 (213) 482-0492  
 jim.garrison@lacity.org

**ELEVATOR/PRESSURE VESSEL INSPECTION**  
**KIM ARTHUR**  
 Chief Inspector/Public Information Officer  
 (213) 202-3467  
 kim.arthur@lacity.org

**MATERIALS CONTROL**  
**LISA YANCEY**  
 Principal Inspector  
 (213) 482-7097  
 lisa.yancey@lacity.org

**METRO**  
**RICKEY JACKSON**  
 Principal Inspector  
 (213) 202-9863  
 rickey.jackson@lacity.org

**ELEVATOR INSPECTION**  
**LARRY ISIDRO**  
 Principal Inspector  
 (213) 202-9830  
 larry.isidro@lacity.org

**SPECIAL EVENTS/TENT INSPECTIONS**  
**DOUG DEVINE**  
 Sr Build Inspector  
 (213) 482-9585  
 doug.devine@lacity.org

**VAN NUYS**  
**ANDREW CROMER**  
 Principal Inspector  
 (818) 374-1104  
 andrew.cromer@lacity.org

**ELEVATOR INSPECTION METRO**  
**DAVID JENNINGS**  
 Sr Safety Eng Elev  
 (213) 202-9832  
 david.jennings@lacity.org

**PRESSURE VESSEL INSPECTION CODE DESK METRO**  
**CIRILO REYES**  
 Sr Safety Eng Press Ves  
 (213) 202-9852  
 cirilo.reyes@lacity.org

**METRO/VN/WLA/SP INVESTIGATIONS**  
**RICK RODRIGUEZ**  
 Sr Build Inspector  
 (213) 482-0345  
 rick.rodriguez@lacity.org

**WEST LA**  
**HENRY BAGHDASSARIAN**  
 Principal Inspector  
 (310) 914-3905  
 henry.baghdassarian@lacity.org

**ELEVATOR INSPECTION VN**  
**FREDERICK LU**  
 Sr Safety Eng Elev  
 (818) 374-1139  
 frederick.lu@lacity.org

**PRESSURE VESSEL INSPECTION CODE DESK VN**  
**ROBERT YOON**  
 Sr Safety Eng Press Ves  
 (818) 374-1149  
 robert.yoon@lacity.org

**CERTIFIED LICENSED CONTRACTOR (CLC)**  
**DOUG DEVINE**  
 Sr Building Inspector  
 (213) 202-5416  
 doug.devine@lacity.org

**SAN PEDRO**  
**NICK LAROCCA**  
 Sr Build Inspector  
 (310) 732-4552  
 nick.larocca@lacity.org

**ELEVATOR INSPECTION WLA**  
**RICHARD OKE**  
 Sr Safety Eng Elev  
 (310) 914-3967  
 richard.oke@lacity.org

**PRESSURE VESSEL INSPECTION CODE DESK WLA**  
**RENATO FABIAN**  
 Sr Safety Eng Press Ves  
 (310) 914-3973  
 renato.fabian@lacity.org

**HIGH RISE RETROFIT/ EQ INSPECTION**  
**RICK RODRIGUEZ**  
 Sr Build Inspector  
 (213) 482-0345  
 rick.rodriguez@lacity.org

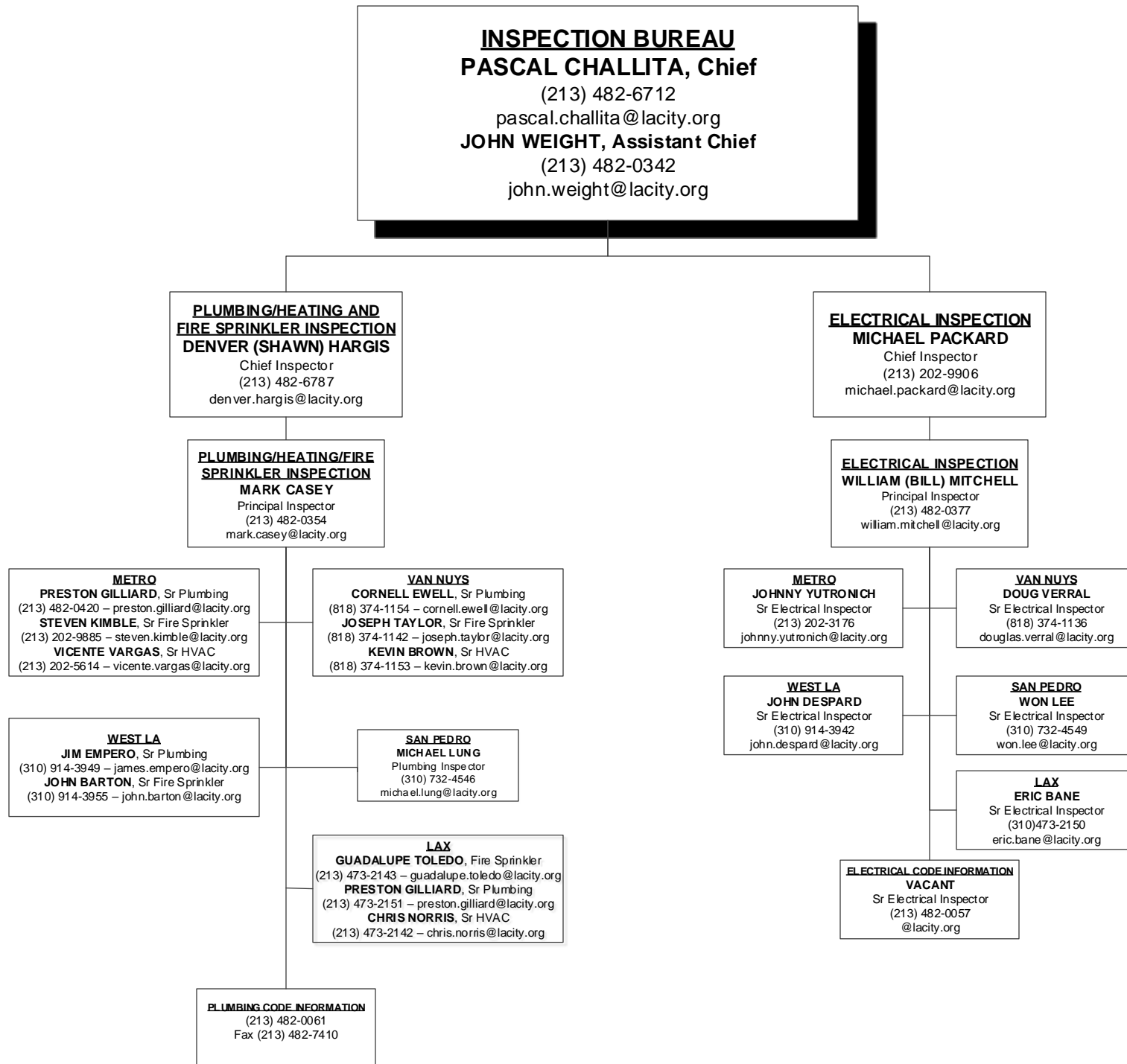
**LAX**  
**TIM GRIFFITH**  
 Sr Build Inspector  
 (213) 473-2153  
 tim.griffith@lacity.org

**ELEVATOR CODE INFORMATION & APPOINTMENTS**  
 (213) 202-9844  
 Fax (213) 202-9922

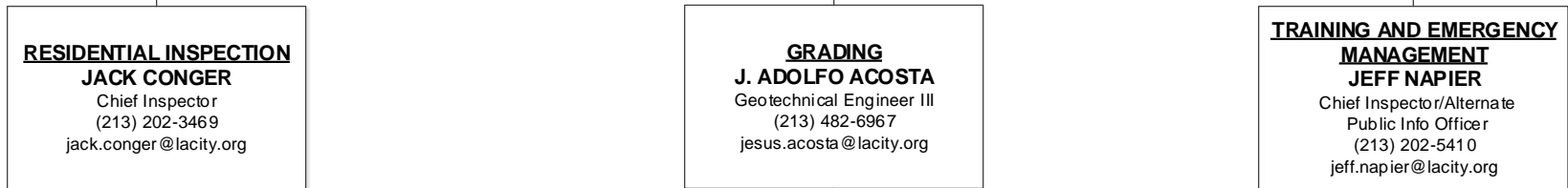
**SOFT STORY INSPECTION**  
**DAVID TSAU**  
 Sr Build Inspector  
 (213) 482-0309  
 david.tsau@lacity.org

**RSBEP/ICM ADMIN SUPPORT**  
**TATIA WADE**  
 Administrative Clerk  
 (213) 482-0464  
 tatia.wade@lacity.org

**TRADE LICENSING SECTION**  
**JACKIE GOMEZ**  
 Principal Clerk  
 (213) 482-0330  
 jackie.gomez@lacity.org



**INSPECTION BUREAU**  
**PASCAL CHALLITA, Chief**  
 (213) 482-6712  
 pascal.challita@lacity.org  
**ERIC JAKEMAN, Assistant Chief**  
 (213) 202-9869  
 eric.jakeman@lacity.org



**METRO**  
**RONALD (DEVIN) MYRICK**  
 Principal Inspector  
 (213) 482-0323  
 ronald.myrick@lacity.org

**VAN NUYS**  
**MICHAEL SMITH**  
 Principal Inspector  
 (818) 374-1155  
 michael.smith@lacity.org

**WLA/San Pedro**  
**STEVE COTTON**  
 Principal Inspector  
 (310) 914-3904  
 vincent.cotton@lacity.org

**GRADING INSPECTION**  
**YERVAND CHAPANYAN**  
 Principal Inspector  
 (213) 482-0397  
 yervand.chapanyan@lacity.org

**GEOTECHNICAL ENGINEERING**  
**DANIEL SCHNEIDEREIT**  
 Engineering Geologist II  
 (213) 482-0430  
 daniel.schneidereit@lacity.org

**TRAINING**

**EMERG MGMT**

**CD #1 & #14**  
**DOMENIC DANERI**  
 Sr Build Mech Inspector  
 (213) 202-3418  
 domenic.daneri@lacity.org  
**RUBEN SALAS**  
 Sr Build Mech Inspector  
 ruben.salas@lacity.org

**CD #2**  
 6262 Van Nuys Blvd.  
**TONY GIANNINI**  
 Sr Build Mech Inspector  
 (818) 374-1159  
 anthony.giannini@lacity.org

**CD #5A**  
 11620 Wilshire Blvd. #1100  
**MATT KELLERMAN**  
 Sr Build Mech Inspector  
 (310) 914-3908  
 matt.kellerman@lacity.org

**METRO**  
**PATRICK MSCHLICH**  
 Sr Build Inspector  
 (213) 482-0396  
 pat.mischlich@lacity.org

**GRADING PLAN CHECK**  
**FRED WONG**  
 Struc Engr Assoc IV  
 (213) 482-0491  
 fred.wong@lacity.org

**ELECTRICAL**  
**ED MITCHELL**  
 Sr Electrical Inspector  
 (213) 482-6797  
 edward.mitchell@lacity.org

**ED GARCIA**  
 Sr Build Mech Inspector  
 (213) 482-6786  
 edward.garcia@lacity.org

**CD #4**  
 221 N. Figueroa, 8th Fl.  
**ROBERT MINASSIANS**  
 Sr Build Mech Inspector  
 (213) 202-3431  
 robert.minassians@lacity.org

**CD #3**  
 19040 Vanowen St.  
**JOHN JANSON**  
 Sr Build Mech Inspector  
 (818) 774-4335  
 john.janson@lacity.org

**CD #11**  
 11620 Wilshire Blvd. #1100  
**DANIEL ORRANTE**  
 Sr Build Mech Inspector  
 (310) 914-3906  
 daniel.orrante@lacity.org

**VAN NUYS INSPECTION**  
**GAYK MANUKYAN**  
 Sr Build Mech Inspector  
 (818) 374-4355  
 gayk.manukyan@lacity.org

**HVAC**  
**MATTHEW NUCKOLLS**  
 Building Mech Inspector  
 (213) 482-6795  
 matthew.nuckolls@lacity.org

**JEANEAN BARAJAS**  
 Training Coordinator  
 Management Analyst  
 (213) 482-6788  
 jeanean.barajas@lacity.org

**CD #5C**  
 221 N. Figueroa, 8th Fl.  
**BOB BLAND**  
 Sr Build Mech Inspector  
 (213) 202-3445  
 elmer.bland@lacity.org

**CD #5B**  
 6262 Van Nuys Blvd  
**BOBBY SHELLY**  
 Sr Build Mech Inspector  
 (818) 374-1157  
 bobby.shelly@lacity.org

**CD #5D**  
 11620 Wilshire Blvd. #1100  
**MICHAEL TEMPLE**  
 Sr Build Mech Inspector  
 (310) 914-3907  
 michael.temple@lacity.org

**WEST LA INSPECTION**  
**SERGIO VALENZUELA**  
 Sr Build Inspector  
 (310) 914-3934  
 sergio.valenzuela@lacity.org

**BUILDING**  
**MARK BEVELAQUA**  
 Sr Build Inspector  
 (213) 482-0386  
 mark.bevelaqua@lacity.org

**CD #8 & #9**  
 221 N. Figueroa, 8th Fl.  
**BOB DUNN**  
 Sr Build Mech Inspector  
 (213) 202-3211  
 bob.dunn@lacity.org

**CD #7**  
 6262 Van Nuys Blvd.  
**PIERRE VEGA**  
 Sr Build Mech Inspector  
 (818) 374-1158  
 pierre.vega@lacity.org

**CD #11B**  
 11620 Wilshire Blvd. #1100  
**CRAIG DAVIS**  
 Sr Build Mech Inspector  
 (310) 914-3909  
 craig.davis@lacity.org

**SAN PEDRO INSPECTION**  
**SERGIO VALENZUELA**  
 Sr Building Inspector  
 (310) 914-3934  
 sergio.valenzuela@lacity.org

**PLUMBING**  
**BRANDON IVES**  
 Plumbing Inspector  
 (213) 202-9892  
 brandon.ives@lacity.org

**METRO TRACKS**  
**MIKE FAUNCE**  
 Sr Build Mech Inspector  
 (213) 202-3122  
 michael.faunce@lacity.org

**CD #12 & TRACKS**  
 19040 Vanowen St  
**DON SUNSERI**  
 Sr Build Mech Inspector  
 (818) 774-4334  
 donald.sunseri@lacity.org

**CD #15**  
 638 S. Beacon St.  
**PAUL BECKER**  
 Sr Build Mech Inspector  
 (310) 732-4558  
 paul.becker@lacity.org

**RESIDENTIAL/ZONING**  
**VACANT**  
 Sr Build Mech Inspector  
 (213) 482-7278  
 @lacity.org

**CODE ENFORCEMENT BUREAU**

**JOHN BIEZINS, Chief**

(213) 252-3902

john.biezins@lacity.org

**FRANK LARA, Assistant Chief**

(213) 252-3310

frank.lara@lacity.org

**FAITH MAULUPE**  
Principal Clerk  
(213) 252-3376  
faith.maulupe@lacity.org

**GENERAL ENFORCEMENT & SPECIALTY/SIGNS INSPECTION**

**JOHN WHIPPLE**

Chief Inspector  
(213) 252-3040

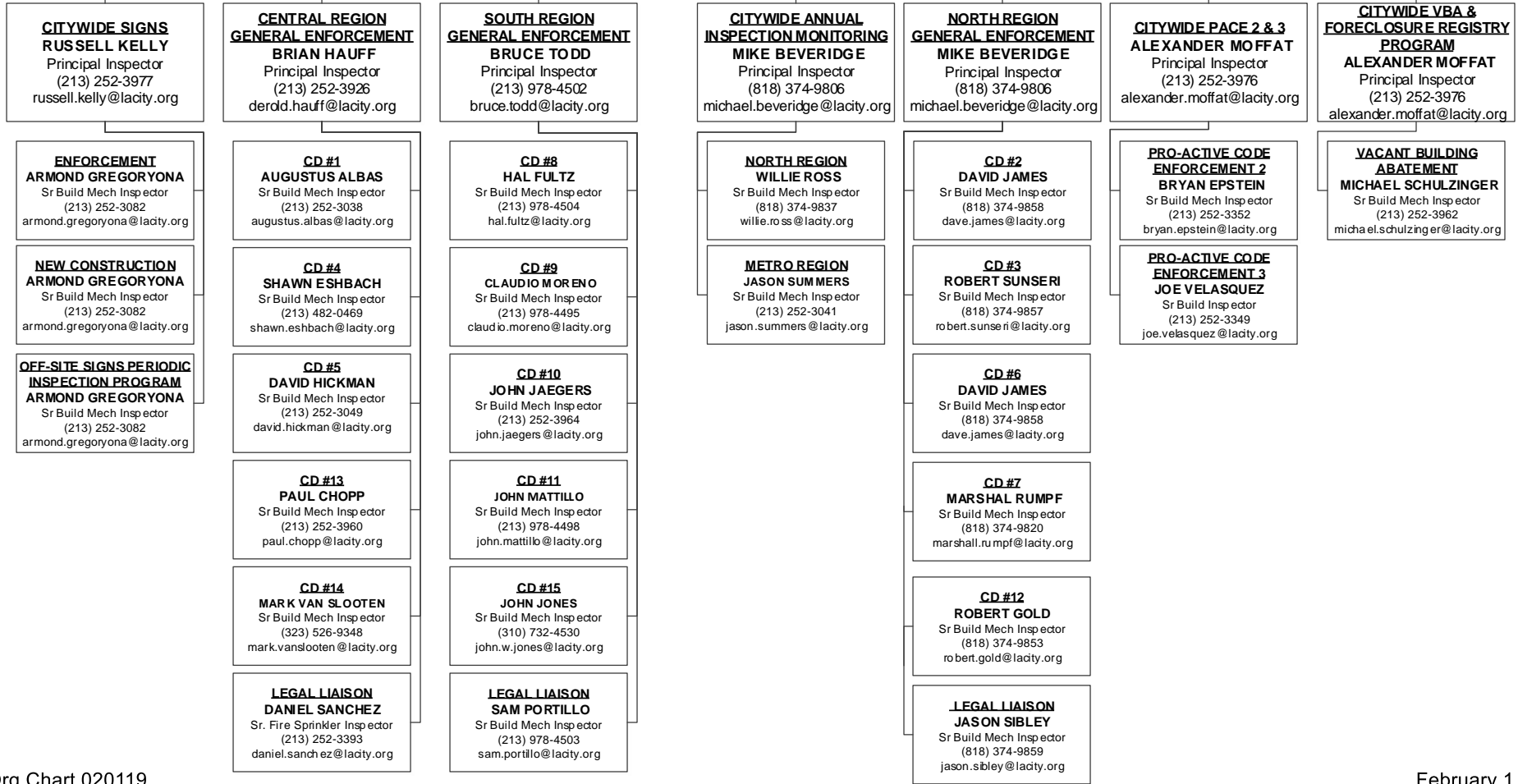
john.whipple@lacity.org

**GENERAL ENFORCEMENT, ANNUAL INSPECTION MONITORING, PROACTIVE CODE ENFORCEMENT, & VACANT BUILDING ABATEMENT**

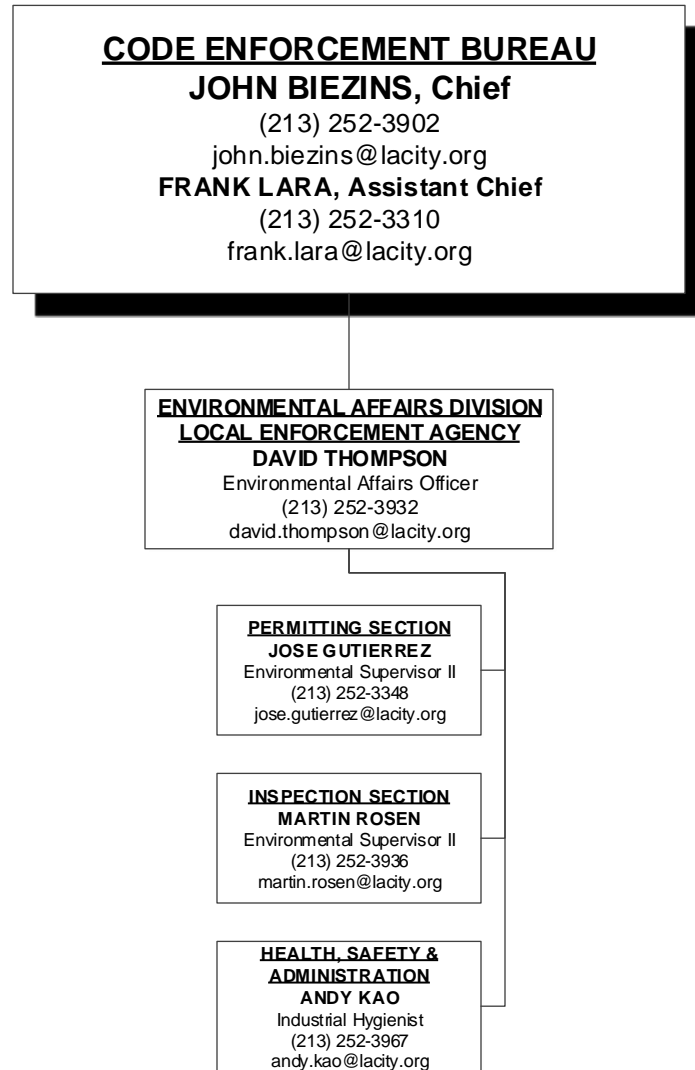
**ANDREW LONGORIA**

Chief Inspector  
(213) 252-3931

andrew.longoria@lacity.org







**RESOURCE MANAGEMENT BUREAU**  
**STEVE ONGELE, Chief**  
 (213) 482-6703  
 steve.ongele@lacity.org  
**ANA MAE YUTAN, Assistant Chief**  
 Chief Mgmt Analyst  
 (213) 482-6782  
 anamae.yutan@lacity.org

