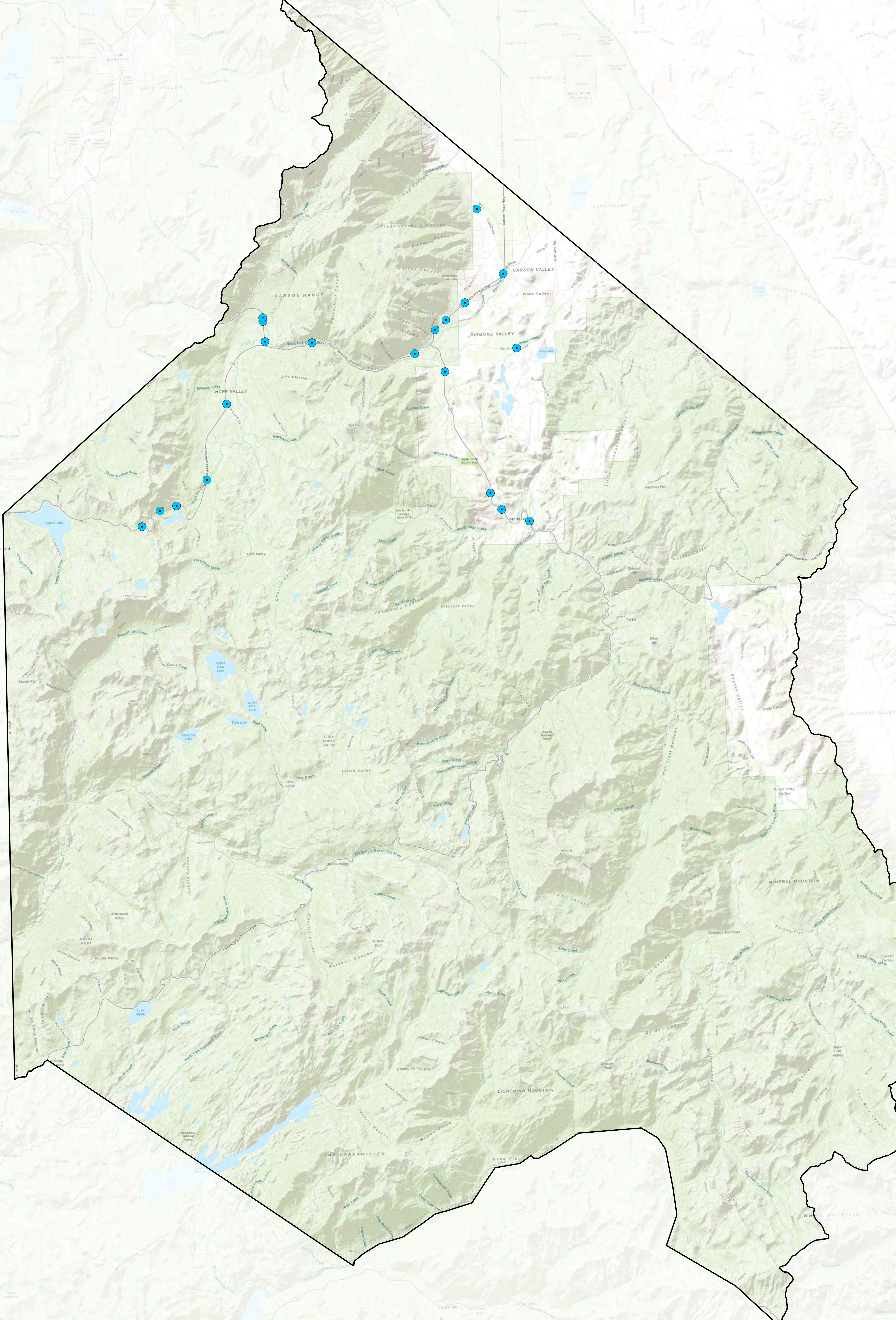


Appendix A2: Alpine Countywide Maps

Map Features

- Alpine County
- Animal Involved Collisions (20)



ALPINE COUNTY
 1 inch = 1.5 miles

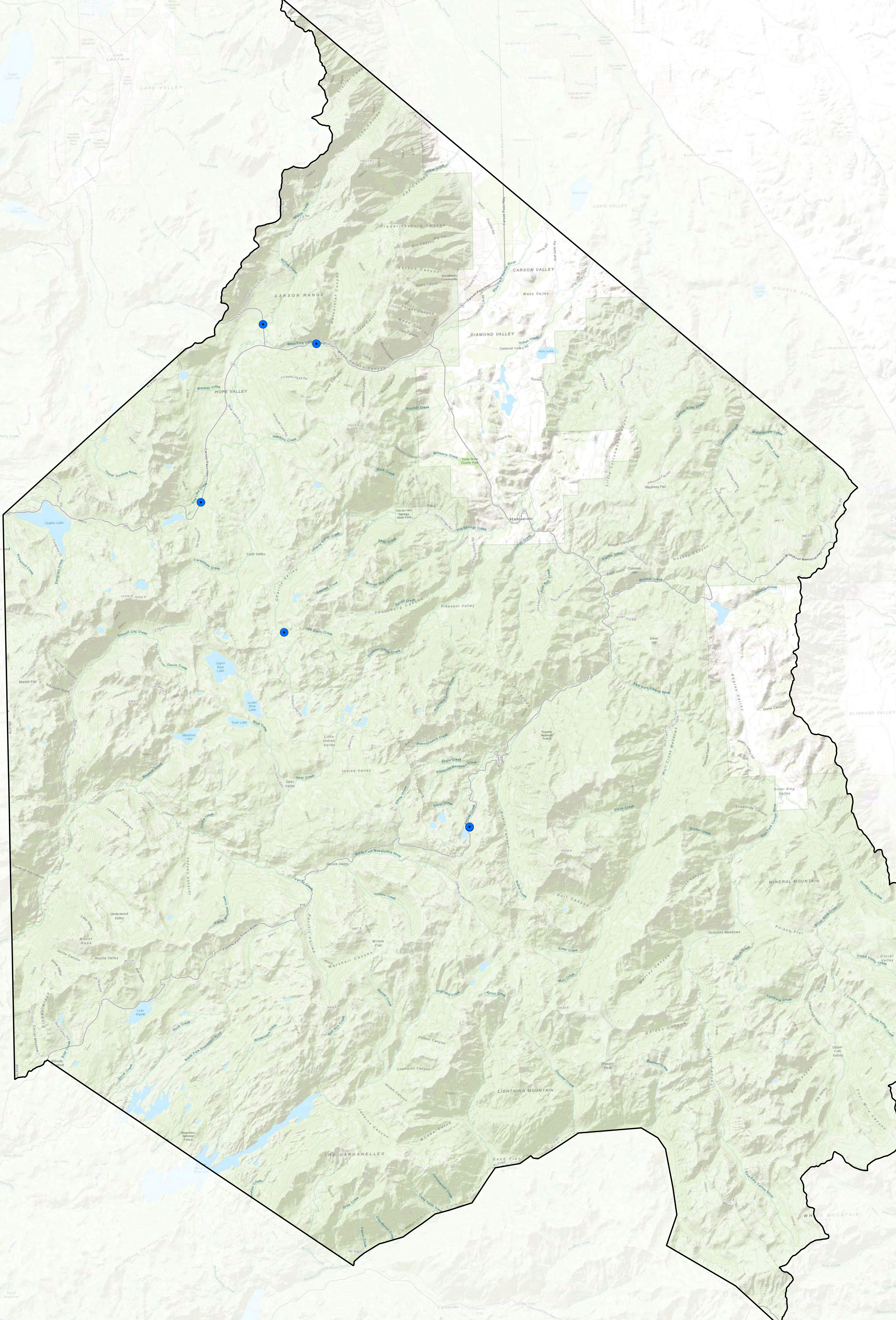
A north arrow is located to the left of the text. Below the text is a scale bar marked from 0 to 3 miles.

MARK THOMAS

The logo consists of a green square with a white diagonal line, followed by the text 'MARK THOMAS' in a bold, sans-serif font.

Map Features

- Alpine County
- Bicycle & Pedestrian Involved Collisions (6)



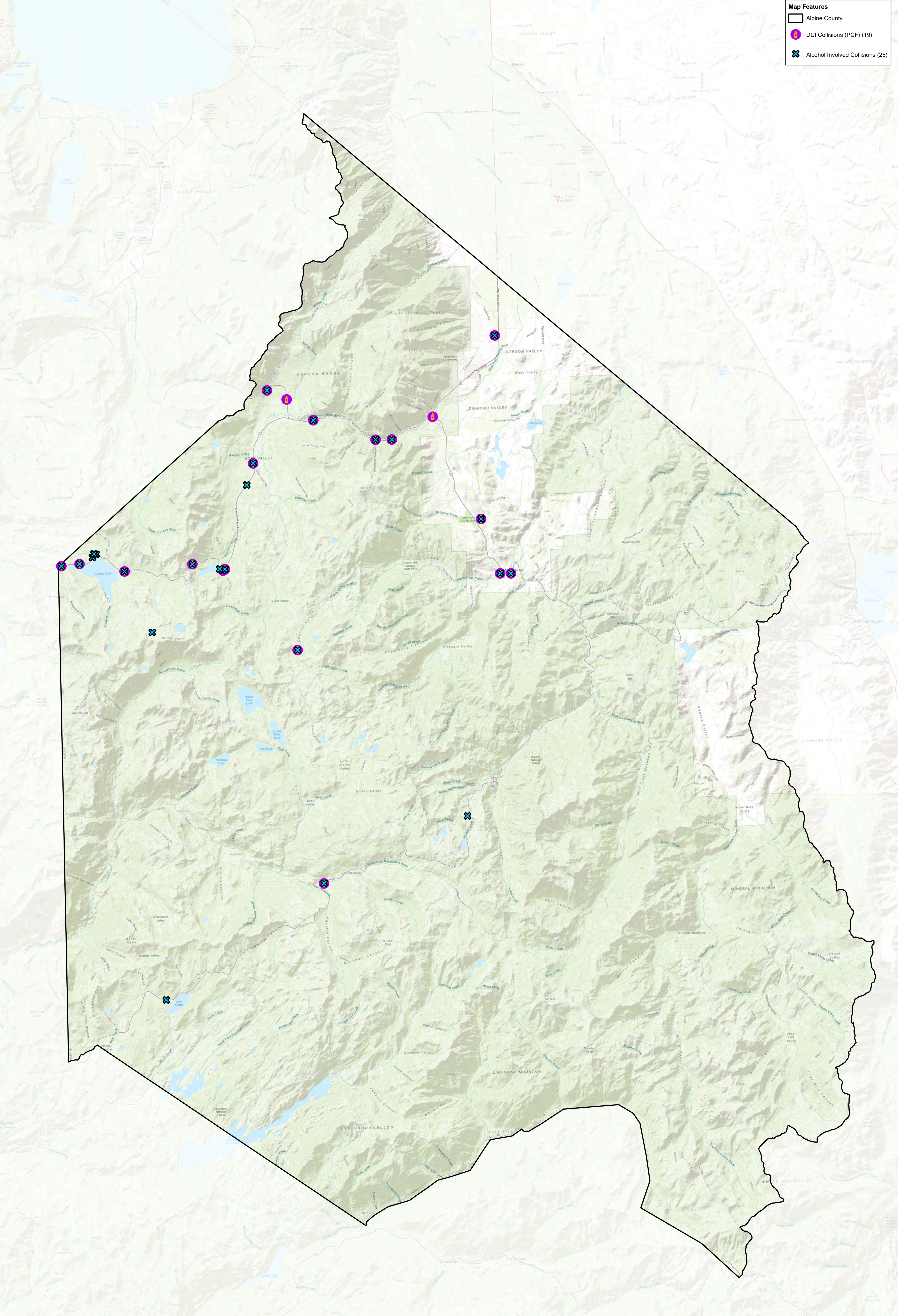
ALPINE COUNTY
 1 inch = 1.5 miles

A north arrow is located to the left of the text. Below the text is a scale bar marked from 0 to 3 miles.



Map Features

- Alpine County
- DUI Collisions (PCF) (19)
- Alcohol Involved Collisions (25)

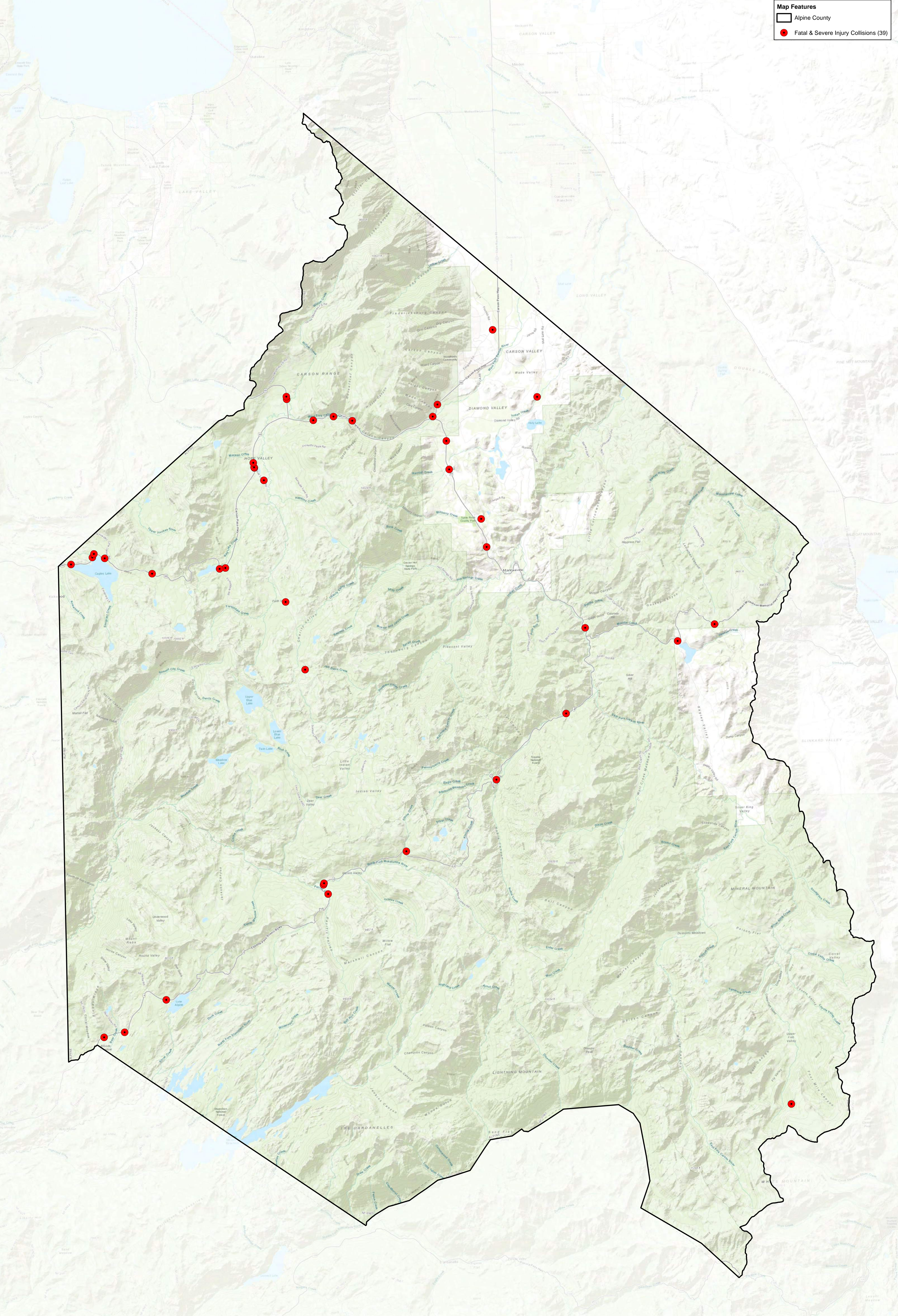


ALPINE COUNTY
 1 inch = 1.5 miles
 Miles
 0 1 2 3

MARK THOMAS

Map Features

- Alpine County
- Fatal & Severe Injury Collisions (39)



ALPINE COUNTY
 1 inch = 1.5 miles

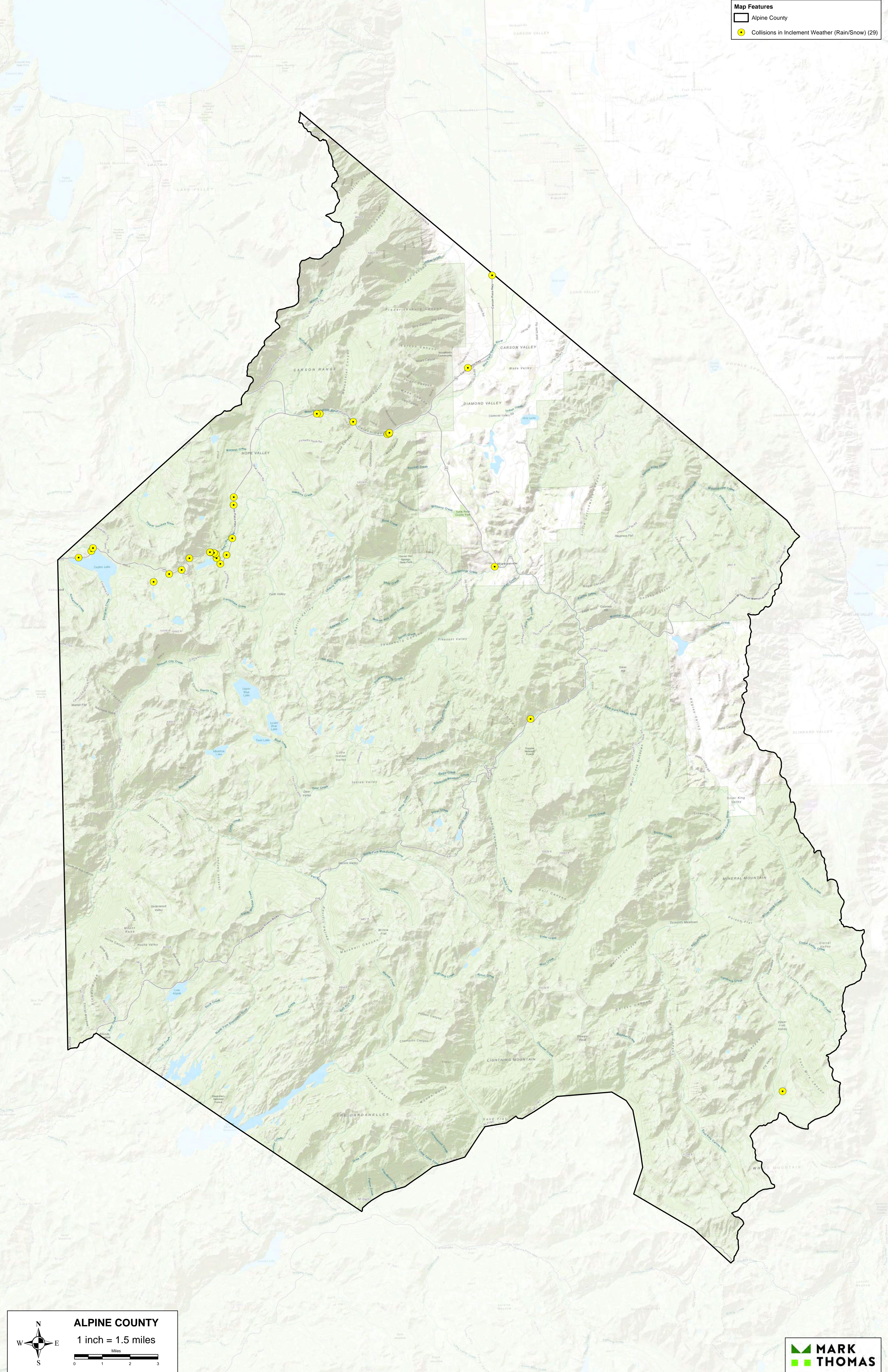
A north arrow is located to the left of the scale bar. The scale bar is marked in miles, ranging from 0 to 3.

MARK THOMAS

The logo for Mark Thomas, featuring a stylized green and yellow graphic to the left of the name.

Map Features

- Alpine County
- Collisions in Inclement Weather (Rain/Snow) (29)

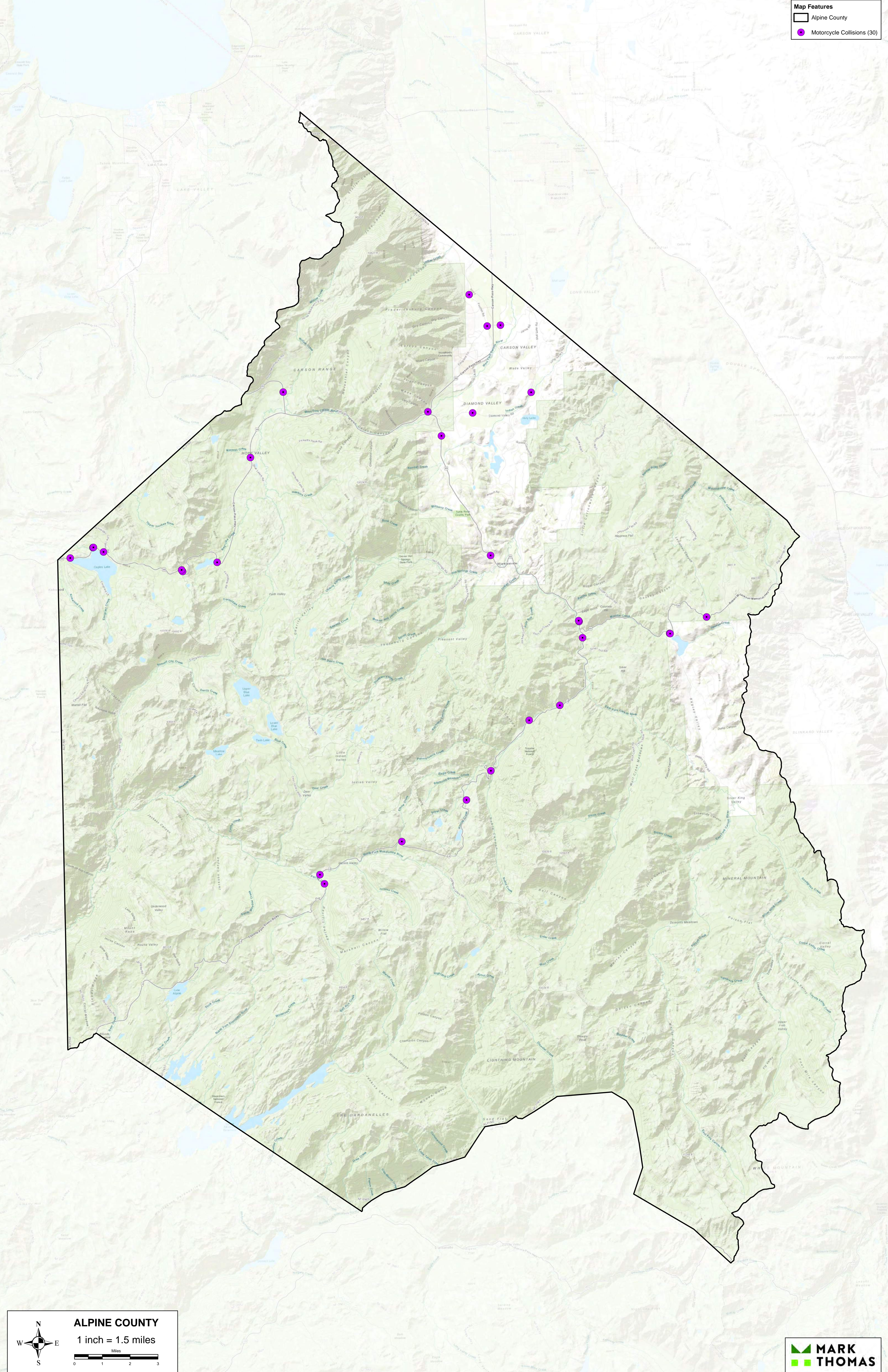


ALPINE COUNTY
 1 inch = 1.5 miles

MARK THOMAS

Map Features

- Alpine County
- Motorcycle Collisions (30)



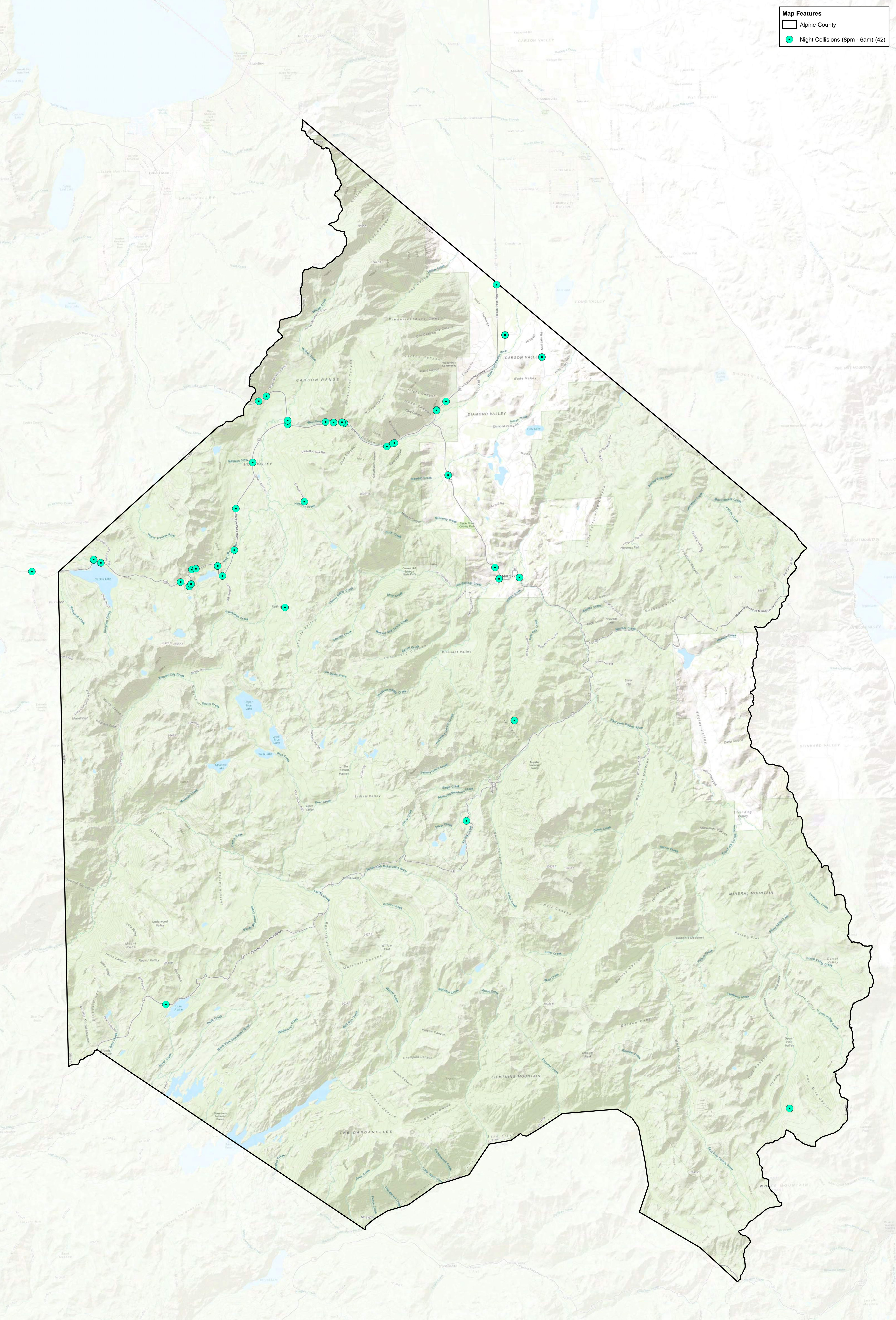
ALPINE COUNTY
 1 inch = 1.5 miles

Scale: 0 1 2 3 Miles

MARK THOMAS

Map Features

- Alpine County
- Night Collisions (8pm - 6am) (42)



ALPINE COUNTY
 1 inch = 1.5 miles
 Miles
 0 1 2 3

MARK THOMAS

Map Features

Alpine County

Type of Collision & Count

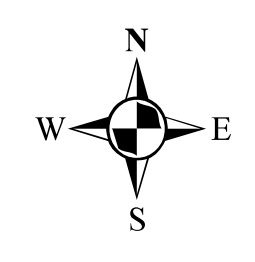
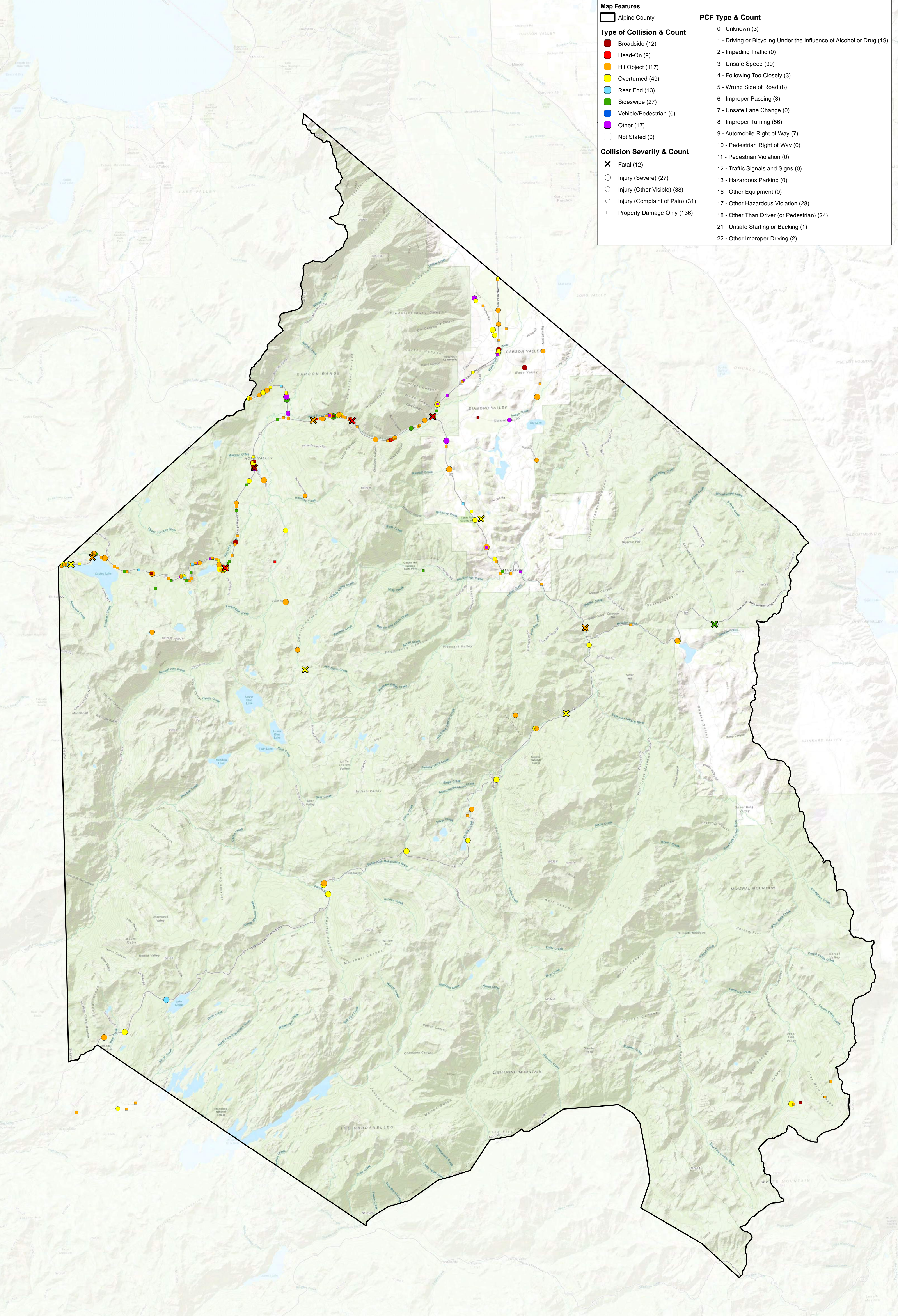
- Broadside (12)
- Head-On (9)
- Hit Object (117)
- Overturned (49)
- Rear End (13)
- Sideswipe (27)
- Vehicle/Pedestrian (0)
- Other (17)
- Not Stated (0)

Collision Severity & Count

- ✕ Fatal (12)
- Injury (Severe) (27)
- Injury (Other Visible) (38)
- Injury (Complaint of Pain) (31)
- Property Damage Only (136)

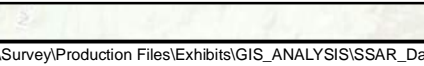
PCF Type & Count

- 0 - Unknown (3)
- 1 - Driving or Bicycling Under the Influence of Alcohol or Drug (19)
- 2 - Impeding Traffic (0)
- 3 - Unsafe Speed (90)
- 4 - Following Too Closely (3)
- 5 - Wrong Side of Road (8)
- 6 - Improper Passing (3)
- 7 - Unsafe Lane Change (0)
- 8 - Improper Turning (56)
- 9 - Automobile Right of Way (7)
- 10 - Pedestrian Right of Way (0)
- 11 - Pedestrian Violation (0)
- 12 - Traffic Signals and Signs (0)
- 13 - Hazardous Parking (0)
- 16 - Other Equipment (0)
- 17 - Other Hazardous Violation (28)
- 18 - Other Than Driver (or Pedestrian) (24)
- 21 - Unsafe Starting or Backing (1)
- 22 - Other Improper Driving (2)



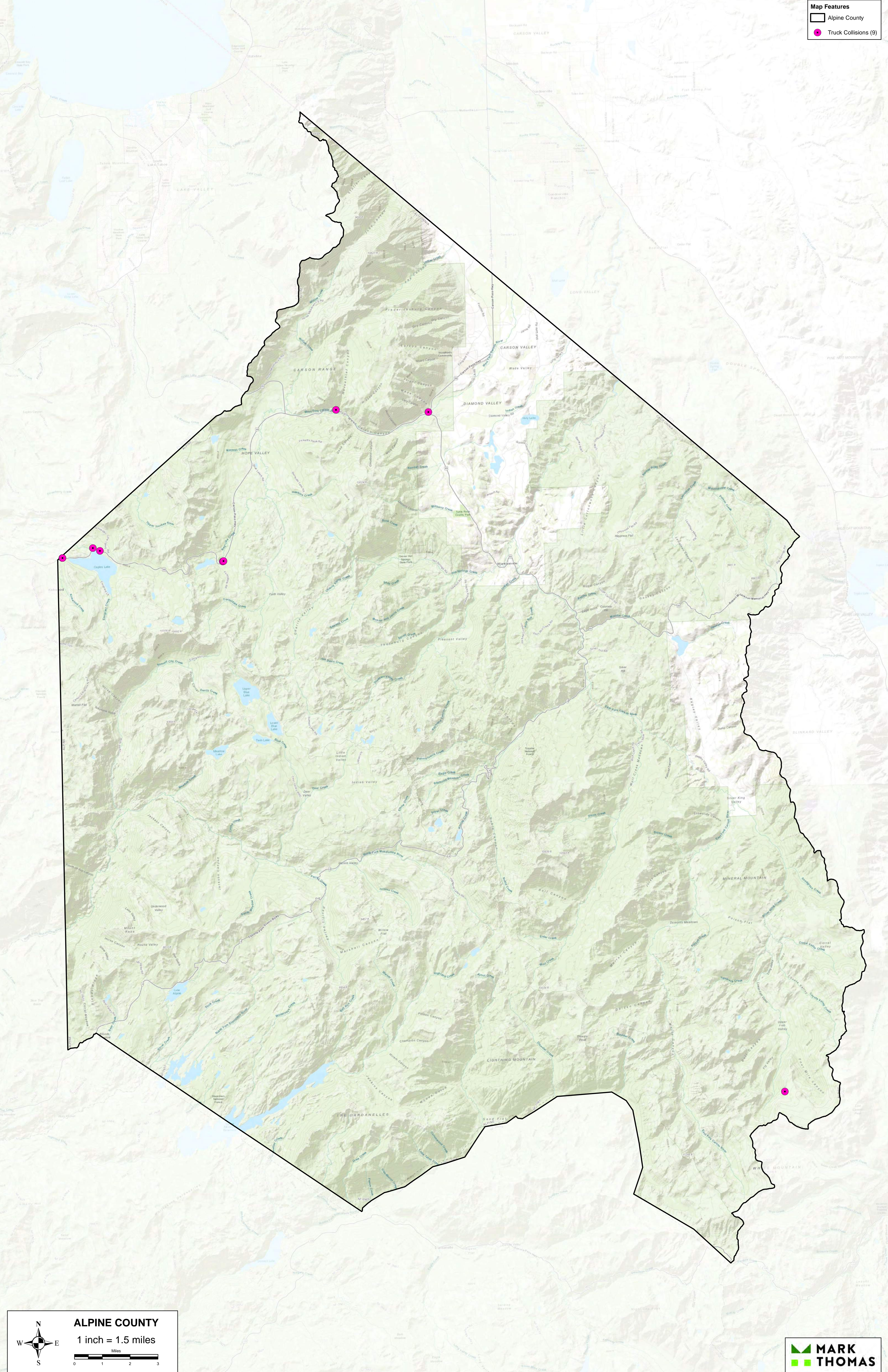
ALPINE COUNTY

1 inch = 1.5 miles



Map Features

- Alpine County
- Truck Collisions (9)



ALPINE COUNTY
 1 inch = 1.5 miles

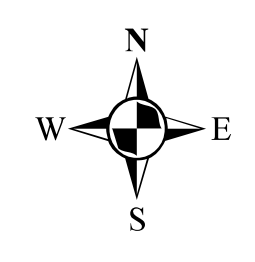
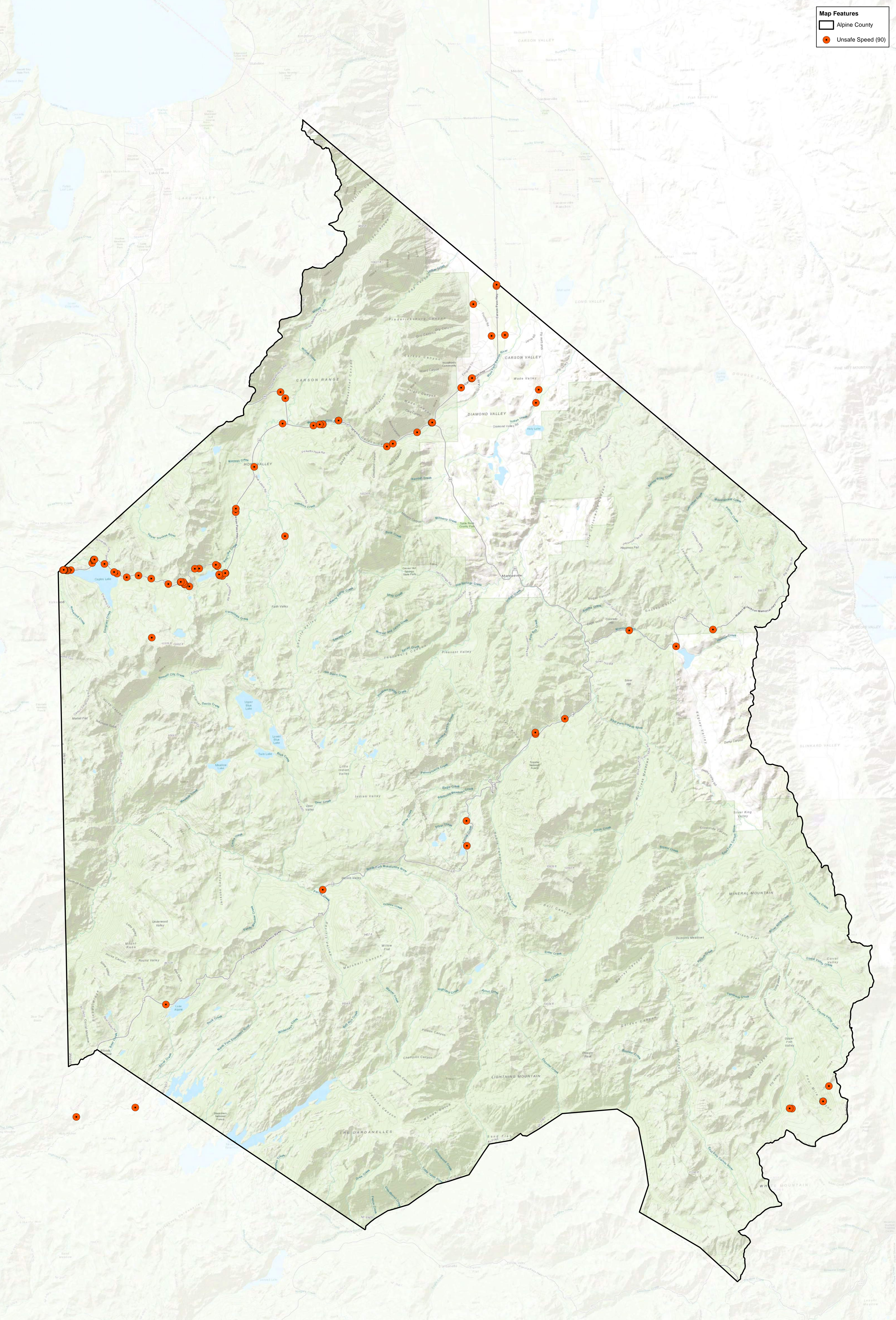
A north arrow is located to the left of the scale bar. The scale bar is marked in miles, with increments of 0, 1, 2, and 3.

MARK THOMAS

The logo for Mark Thomas, featuring a stylized green and yellow graphic to the left of the company name.

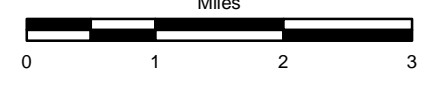
Map Features

- Alpine County
- Unsafe Speed (90)



ALPINE COUNTY

1 inch = 1.5 miles



MARK THOMAS