



**Residential Patio Covers**  
**Shasta County**  
**Department of Resource Management**  
**Building Division**

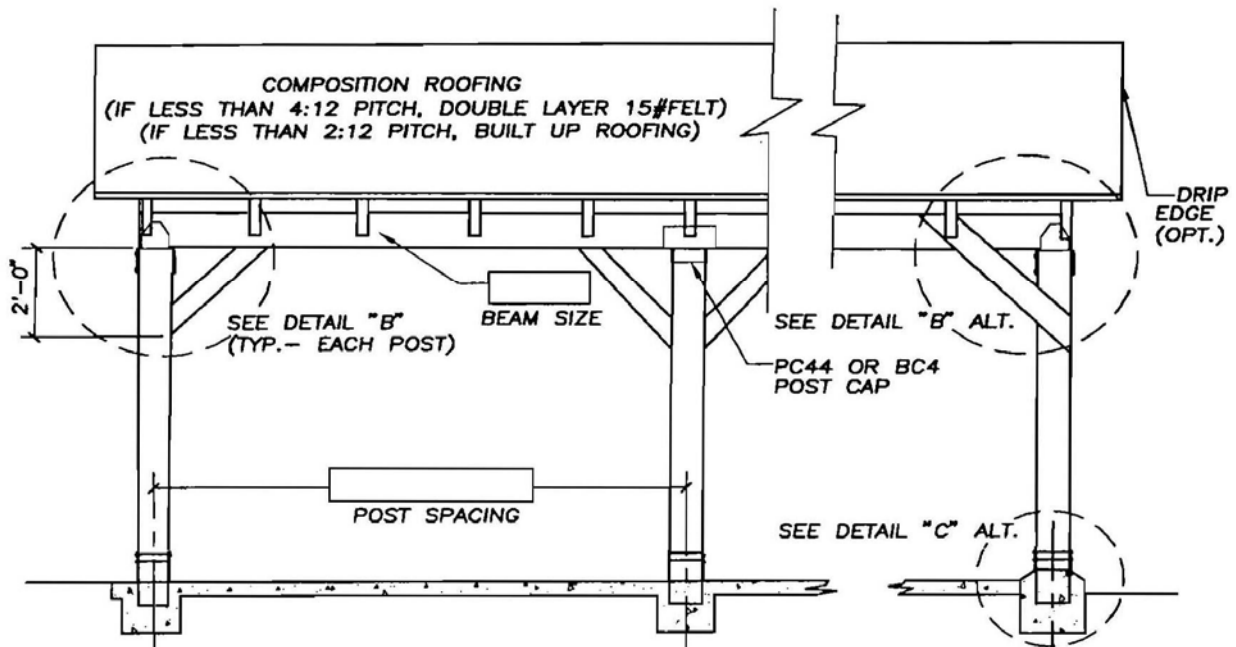
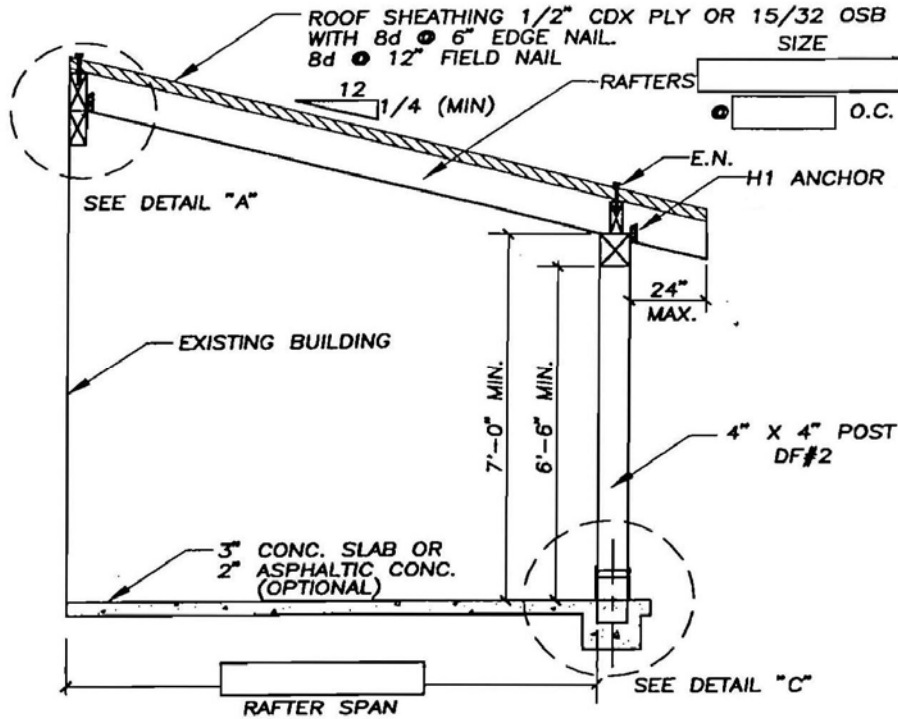
1855 Placer Street, Suite 102 Redding, CA 96001-1759  
(530) 225-5761 \* Fax (530) 245-6468

Handout

Rev. Date  
08/10

Page 1 of 4

This handout is intended to cover simple span patio covers in areas with a roof snow load of 30 pounds or less. Spans are limited to 12' and covers are to be no more than 10' in height.





**Residential Patio Covers**  
**Shasta County**  
**Department of Resource Management**  
**Building Division**

1855 Placer Street, Suite 102 Redding, CA 96001-1759  
 (530) 225-5761 \* Fax (530) 245-6468

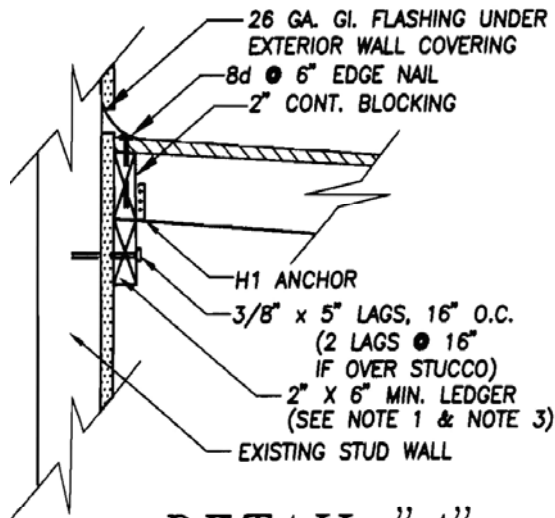
Handout

Rev. Date  
 08/10

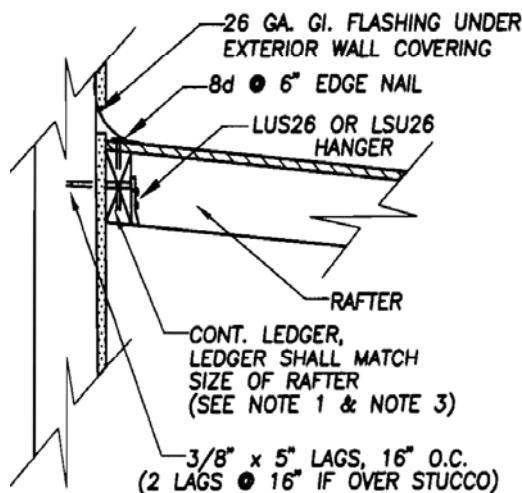
Page 2 of 4

**NOTES**

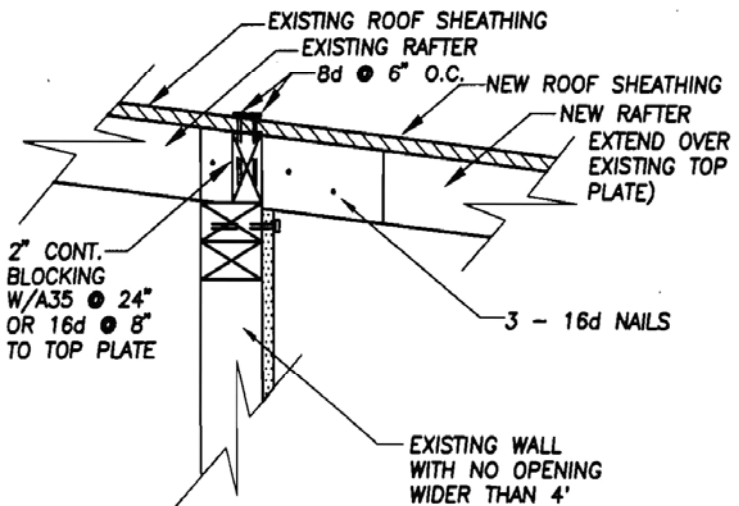
1. LEDGERS OVER DOORS & WINDOWS SHALL BE CONTINUOUS AND EXTEND 4' PAST OPENING. USE 2" X 8" MIN. LEDGER OVER 6' OPENING WITH (6) 3/8" X 5" LAG BOLTS TO STUDS, EACH SIDE OF OPENING (2 PER STUD).
2. IF RAFTERS ARE TO BE SUPPORTED BY EXISTING EAVE OVERHAND, ENGINEERING REQUIRED.
3. DO NOT CUT EXISTING STRUCTURAL SIDING. (INSULATING FOAM IS NOT STRUCTURAL SIDING. REMOVE FOAM BEHIND LEDGER.)
4. PRE-DRILL LEAD HOLES FOR LAG BOLTS:  
 1/4" HOLE FOR THREADED PORTION,  
 3/8" HOLE FOR SHANK.
5. PROVIDE PLOT PLAN SHOWING THE LOCATION OF ALL EXISTING BUILDINGS ON LOT WITH DIMENSIONS TO LOT LINES AND BETWEEN BUILDINGS.
6. CONNECTORS MUST BE APPROVED. INSTALL NAILS OR BOLTS IN CONNECTORS IN ACCORDANCE WITH MANUFACTURERS INSTRUCTIONS.
7. PROVIDE SMOKE DETECTORS AS REQUIRED



**DETAIL "A"**



**DETAIL "A"**  
**ALTERNATE**



**DETAIL "A"**  
**ALTERNATE**



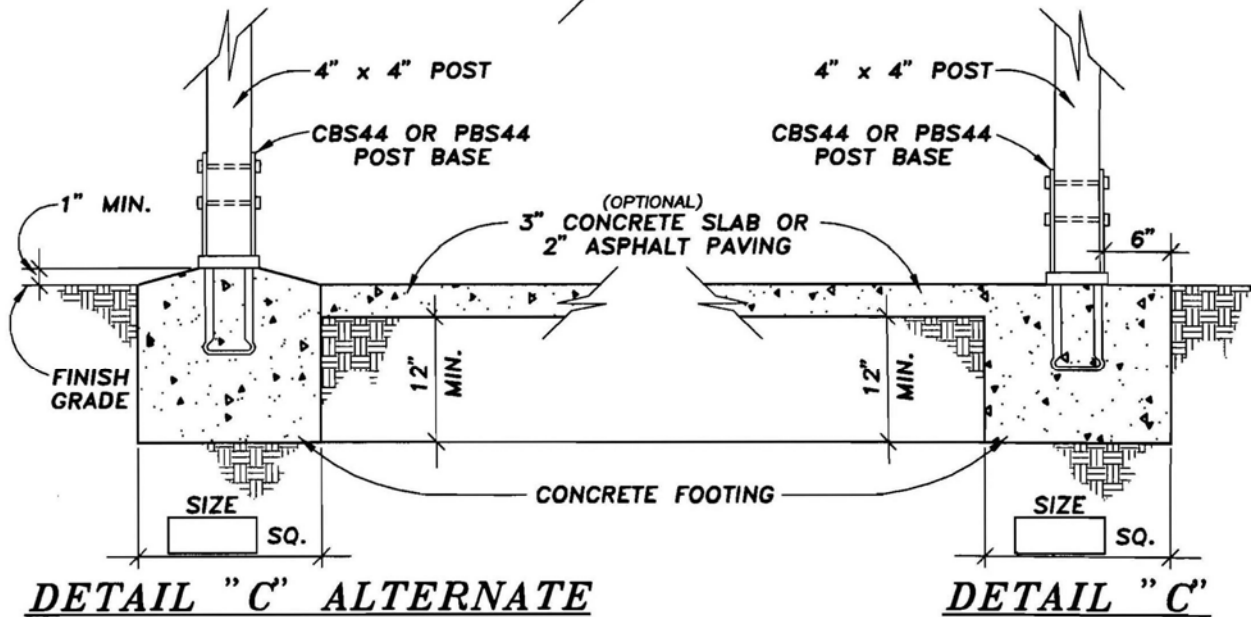
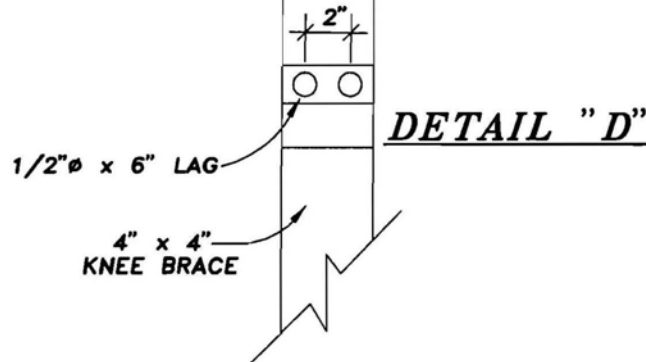
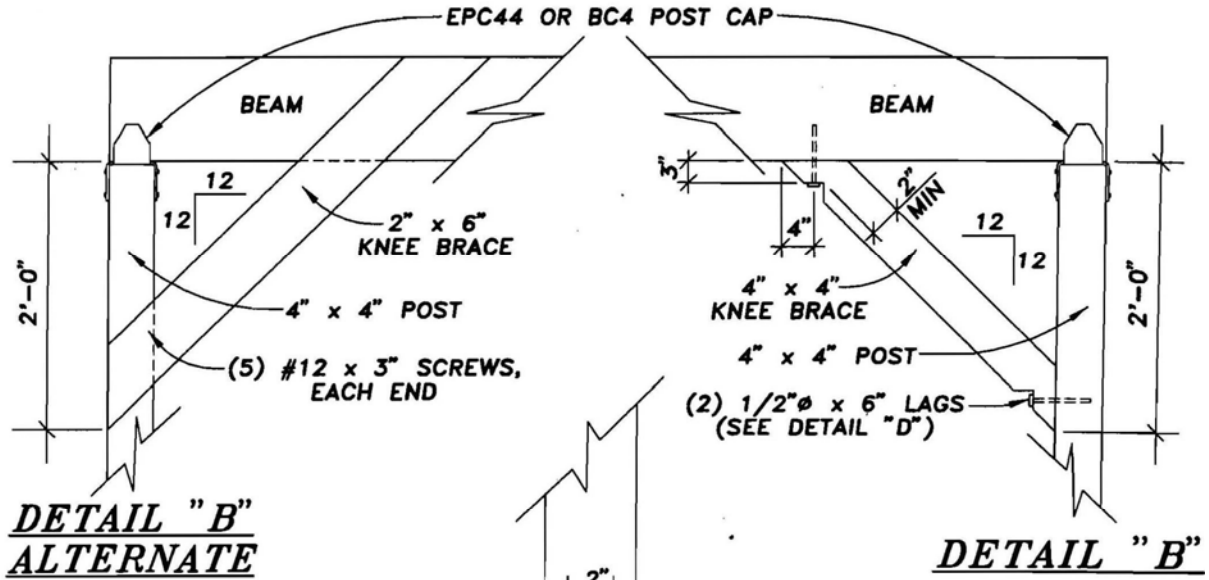
**Residential Patio Covers**  
**Shasta County**  
**Department of Resource Management**  
**Building Division**

1855 Placer Street, Suite 102 Redding, CA 96001-1759  
(530) 225-5761 \* Fax (530) 245-6468

Handout

Rev. Date  
08/10

Page 3 of 4





**Residential Patio Covers  
Shasta County  
Department of Resource Management  
Building Division**

1855 Placer Street, Suite 102 Redding, CA 96001-1759  
(530) 225-5761 \* Fax (530) 245-6468

Handout

Rev. Date  
08/10

Page 4 of 4

**Table A – Minimum Square Footing Size in inches – 30 pound or less Snow Loads**

<b>Post Spacing</b>	<b>Rafter Span in Feet</b>			
	<b>6</b>	<b>8</b>	<b>10</b>	<b>12</b>
<b>4</b>	12	12	12	12
<b>6</b>	12	12	12	15
<b>8</b>	12	15	15	15
<b>10</b>	15	15	18	18
<b>12</b>	15	18	18	20

**Table B – Minimum Rafter Size - #2 Douglas Fir – 30 pound or less Snow Loads**

<b>Rafter Span in feet</b>	<b>Rafter Spacing Center to Center in inches</b>		
	<b>12</b>	<b>16</b>	<b>24</b>
<b>6</b>	2 x 4	2 x 4	2 x 4
<b>7</b>	2 x 4	2 x 4	2 x 4
<b>8</b>	2 x 4	2 x 6	2 x 6
<b>9</b>	2 x 6	2 x 6	2 x 6
<b>10</b>	2 x 6	2 x 6	2 x 8
<b>11</b>	2 x 6	2 x 6	2 x 8
<b>12</b>	2 x 6	2 x 6	2 x 8

**Table C - Minimum Beam Sizes - #2 Douglas Fir - – 30 pound or less Snow Loads**

<b>Post Spacing in feet</b>	<b>Rafter Span in Feet</b>			
	<b>6</b>	<b>8</b>	<b>10</b>	<b>12</b>
<b>4</b>	4 x 4	4 x 4	4 x 6	4 x 6
<b>6</b>	4 x 6	4 x 6	4 x 6	4 x 6
<b>8</b>	4 x 6	4 x 6	4 x 8	4 x 8
<b>10</b>	4 x 8	4 x 8	4 x 10	4 x 10
<b>12</b>	4 x 8	4 x 10	4 x 12	4 x 12