



Inland Counties Emergency Medical Agency

1425 South D Street, San Bernardino, CA 92415-0060 ■ (909) 388-5823 ■ Fax (909) 388-5825 ■ www.icema.net

Serving San Bernardino, Inyo, and Mono Counties
Tom Lynch, EMS Administrator
Reza Vaezazizi, MD, Medical Director

DATE: September 9, 2021

TO: Hospital CEOs, ED Directors/Managers and PLNs - San Bernardino County

FROM: Tom Lynch
EMS Administrator

SUBJECT: HOSPITAL BED DELAY REPORT FOR JANUARY - AUGUST 2021

The Inland Counties EMS Agency (ICEMA) is providing the January through August 2021 hospital ambulance patient offload delay (APOD) report utilizing data retrieved from the ambulance provider computer aided dispatch records.

The APOD report provides the total number of:

- 9-1-1 transports to each hospital.
- Transports that resulted in APOD.
- APOD hours/minutes calculated beginning 25 minutes after the ambulance arrives at the hospital.

If you have any questions, please contact Mark Roberts, Technical Consultant, at (909) 388-5804 or via e-mail at mark.roberts@cao.sbcounty.gov.

TL/MR/jlm

c: Megan Barajas, Interim Regional Vice President, HASC
File Copy

BOARD OF DIRECTORS

Col. Paul Cook (Ret.)
First District

Janice Rutherford
Second District

Dawn Rowe
Vice Chair
Third District

Curt Hagman
Chairman
Fourth District

Joe Baca, Jr.
Fifth District

Leonard X. Hernandez
Chief Executive Officer

Inland Counties Emergency Medical Agency



Bed Delay Report

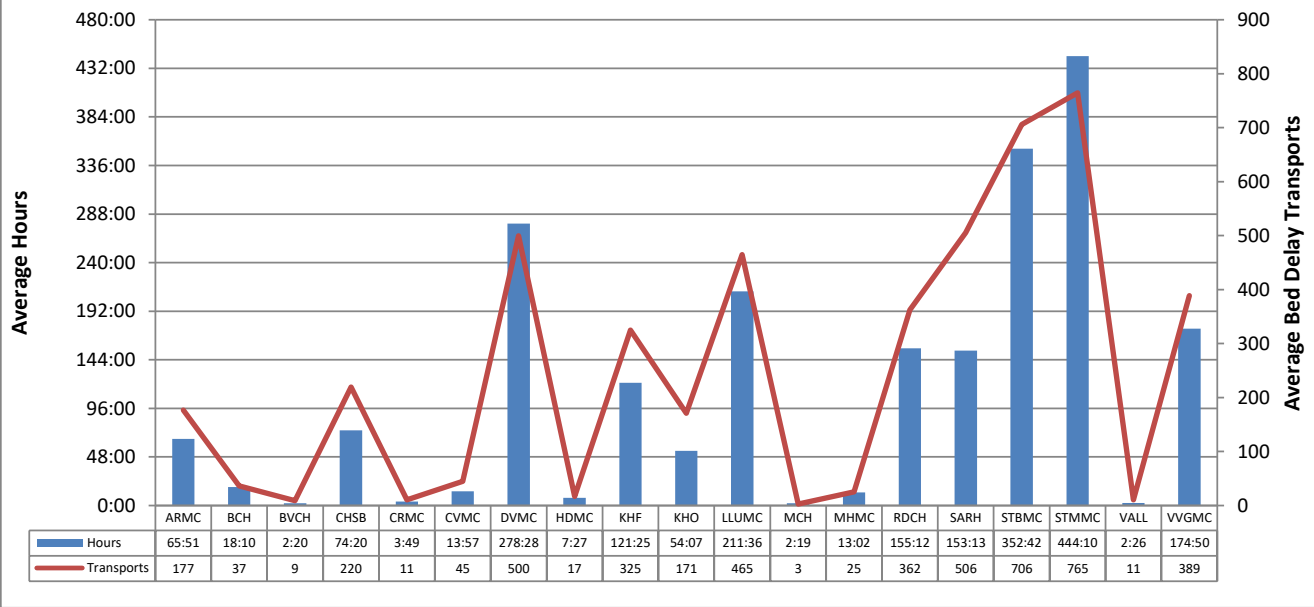
January 2021 – August 2021

Report Detail

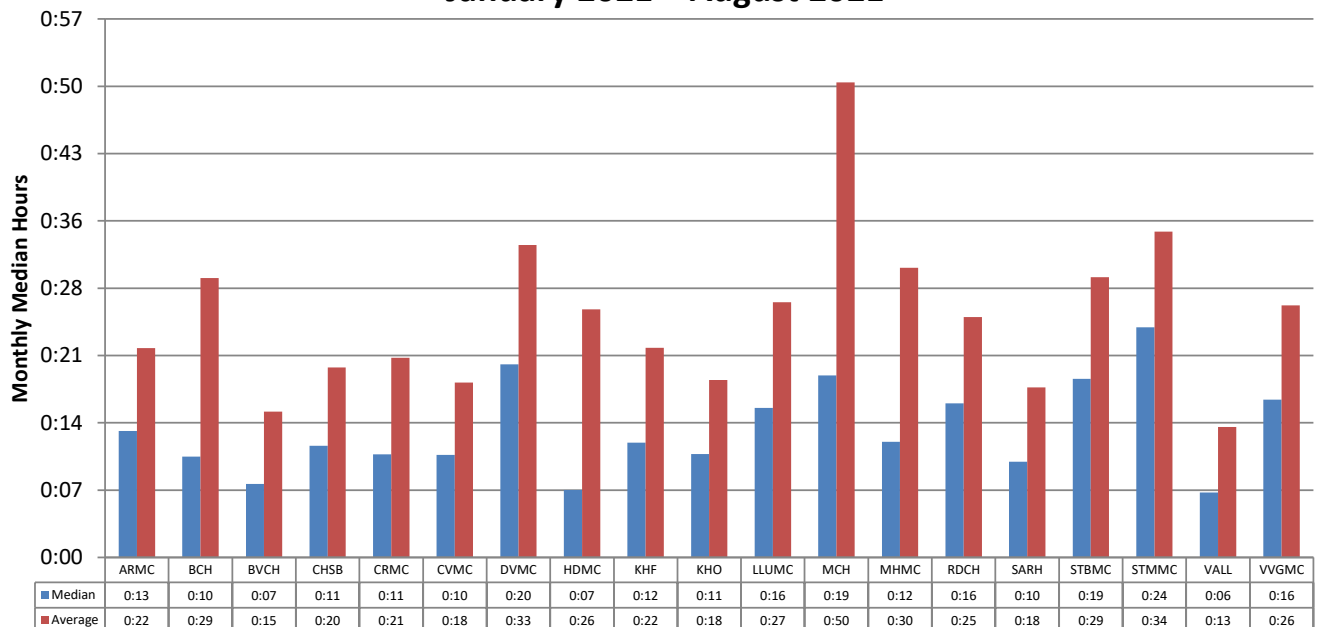
This report collects and summarizes the "Bed Delay" for a selected group of hospitals. "Bed Delay" is the time between arrival of an ambulance at a hospital and the ambulance going back in service. The first 25 minutes are excluded from consideration. The only type of transports that are considered are 911 calls where the patient is treated and transported via ambulance.

Abbreviated Name	Full Name
ARMC	Arrowhead Regional Medical Center
BCH	Barstow Community Hospital
BVCH	Bear Valley Community Hospital
CHSB	Community Hospital San Bernardino
CRMC	Colorado River Medical Center
CVMC	Chino Valley Medical Center
DVMC	Desert Valley Hospital Center
HDMC	Hi-Desert Medical Center
KHF	Kaiser Hospital Medical Center - Fontana
KHO	Kaiser Hospital Medical Center - Ontario
LLUMC	Loma Linda University Medical Center
MCH	Mountains Community Hospital
MHMC	Montclair Hospital Medical Center
RDCH	Redlands Community Hospital
SARH	San Antonio Regional Hospital
STBMC	St. Bernardine Medical Center
STMMC	St. Mary Medical Center
VALL	JLP VA Loma Linda
VVGMC	Victor Valley Global Medical Center

Bed Delay Hours* and Bed Delay Transports Average per Hospital for an Average Month Period January 2021 – August 2021



Time Bed Delay Patients Were on Bed Delay per Patient Median and Average by Hospital January 2021 – August 2021



*Note: Bed Delay Hours excludes the first 25 minutes of each transport. ICEMA uses the Signature Locked time as indicated by the paramedic and/or the Computer Aided Dispatch (CAD).

Total Bed Delay Hours* and Bed Delay Transports by Hospital January 2021 – August 2021

Hospital	Total Bed Delay Hours*	Bed Delay Transports	Total Transports	Bed Delay Percentage	Average Bed Delay by Patient	Median Bed Delay by Patient
ARMC	526:48	1,412	7,080	19.9%	0:22	0:13
BCH	145:24	292	3,012	9.7%	0:29	0:10
BVCH	18:43	72	1,211	5.9%	0:15	0:07
CHSB	594:45	1,757	4,064	43.2%	0:20	0:11
CRMC	30:36	86	503	17.1%	0:21	0:11
CVMC	111:36	358	2,445	14.6%	0:18	0:10
DVMC	2227:46	3,999	6,476	61.8%	0:33	0:20
HDMC	59:41	135	3,399	4.0%	0:26	0:07
KHF	971:21	2,601	8,737	29.8%	0:22	0:12
KHO	432:59	1,369	4,771	28.7%	0:18	0:11
LLUMC	1692:50	3,721	9,274	40.1%	0:27	0:16
MCH	18:37	22	622	3.5%	0:50	0:19
MHMC	104:18	202	1,610	12.5%	0:30	0:12
RDCH	1241:42	2,899	5,849	49.6%	0:25	0:16
SARH	1225:47	4,045	11,311	35.8%	0:18	0:10
STBMC	2821:41	5,647	8,728	64.7%	0:29	0:19
STMMC	3553:23	6,117	8,141	75.1%	0:34	0:24
VALL	19:33	84	711	11.8%	0:13	0:06
VVGMC	1398:47	3,113	5,357	58.1%	0:26	0:16
Total	17196:27	37,931	93,301	40.7%	0:27	0:16

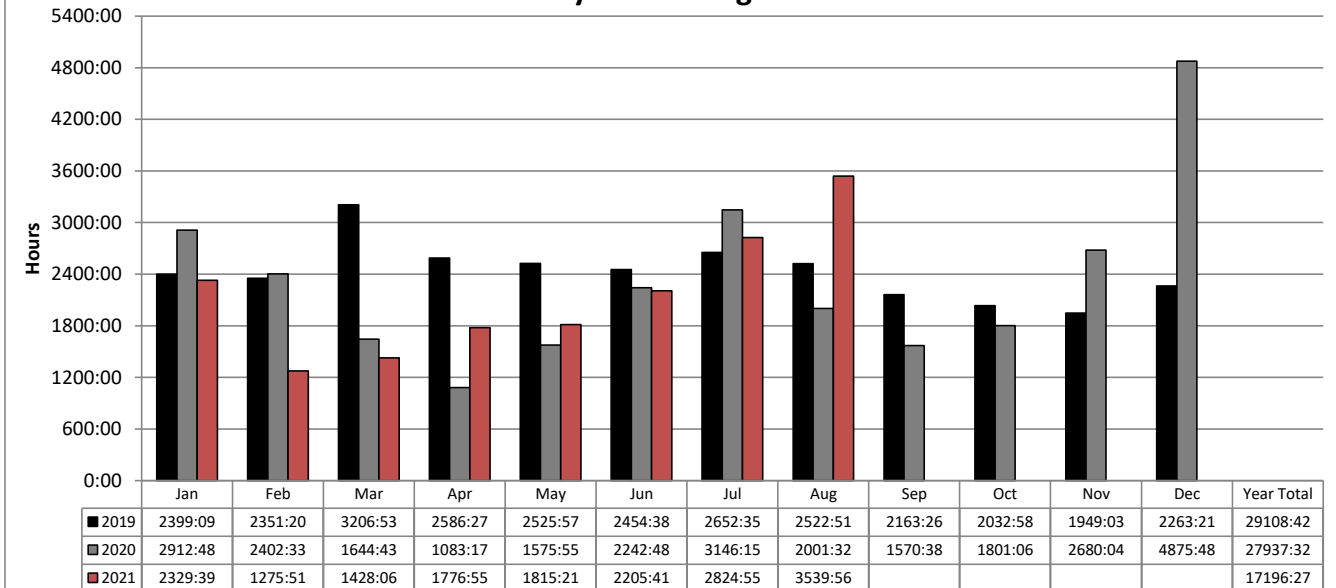
*Note: Bed Delay Hours excludes the first 25 minutes of each transport. ICEMA uses the Signature Locked time as indicated by the paramedic and/or the Computer Aided Dispatch (CAD).

**Total Monthly Bed Delay Hours* by Hospital
January 2021 – August 2021**

Hospital	Jan	Feb	Mar	Apr	May	Jun	Jul	Aug	Sep	Oct	Nov	Dec	Total	Average Bed Delay by Month
ARMC	79:28	34:32	36:36	70:18	49:46	61:54	59:22	134:49					526:48	65:51
BCH	18:39	6:33	10:22	28:59	26:52	11:13	17:25	25:17					145:24	18:10
BVCH	6:11	3:37	1:35	0:10	0:03	1:08	1:57	3:58					18:43	2:20
CHSB	113:01	53:58	57:47	42:39	58:20	55:31	68:29	144:57					594:45	74:20
CRMC	4:01	0:39	5:41	7:47	2:49	1:44	3:53	4:00					30:36	3:49
CVMC	43:20	11:53	5:28	8:16	6:25	12:28	13:30	10:14					111:36	13:57
DVMC	309:54	195:50	141:23	194:44	208:40	360:21	353:59	462:51					2227:46	278:28
HDMC	9:31	2:00	1:41	1:12	17:11	7:39	14:00	6:22					59:41	7:27
KHF	126:40	53:09	38:06	73:28	66:53	137:30	224:50	250:43					971:21	121:25
KHO	61:12	15:48	32:28	43:15	61:04	68:07	78:34	72:28					432:59	54:07
LLUMC	199:34	128:18	140:33	186:39	193:33	211:29	255:58	376:43					1692:50	211:36
MCH	1:29	0:17	1:43	0:42		9:39	4:27	0:18					18:37	2:19
MHMC	65:26	3:31	9:23	1:23	5:29	3:01	2:27	13:35					104:18	13:02
RDCH	220:45	69:38	100:03	113:26	103:10	79:22	226:38	328:38					1241:42	155:12
SARH	181:53	135:14	129:46	87:59	145:35	125:10	203:50	216:16					1225:47	153:13
STBMC	303:04	208:47	295:08	307:49	327:10	360:56	490:18	528:26					2821:41	352:42
STMMC	385:01	227:20	334:57	494:52	411:59	516:22	559:11	623:38					3553:23	444:10
VALL	7:23	1:13	3:02	1:11	1:44	1:31	0:49	2:36					19:33	2:26
VVGMC	192:59	123:26	82:15	111:59	128:31	180:27	245:09	333:58					1398:47	174:50
Total	2329:39	1275:51	1428:06	1776:55	1815:21	2205:41	2824:55	3539:56					17196:27	2149:33

*Note: Bed Delay Hours excludes the first 25 minutes of each transport. ICEMA uses the Signature Locked time as indicated by the paramedic and/or the Computer Aided Dispatch (CAD).

**San Bernardino County
Total Bed Delay Hours* by Month
January 2021 – August 2021**



**Total Bed Delay Hours* and Bed Delay Transports by Hospital
January 2021 – August 2021**

Hospital	2019				2020				2021 YTD			
	Total BD Hours*	BD Transports	Total Transports	BD %	Total BD Hours*	BD Transports	Total Transports	BD %	Total BD Hours*	BD Transports	Total Transports	BD %
ARMC	1905	3,815	11,434	33.4%	1338	2,933	10,087	29.1%	526	1,412	7,080	19.9%
BCH	239	442	5,464	8.1%	315	461	4,842	9.5%	145	292	3,012	9.7%
BVCH	48	119	1,885	6.3%	68	162	1,631	9.9%	18	72	1,211	5.9%
CHSB	1031	2,963	7,290	40.6%	927	2,566	6,612	38.8%	594	1,757	4,064	43.2%
CRMC	68	126	827	15.2%	33	108	751	14.4%	30	86	503	17.1%
CVMC	209	619	4,777	13.0%	279	638	4,338	14.7%	111	358	2,445	14.6%
DVMC	3287	6,165	11,355	54.3%	3501	5,662	10,014	56.5%	2227	3,999	6,476	61.8%
HDMC	173	421	5,648	7.5%	150	343	5,030	6.8%	59	135	3,399	4.0%
KHF	2585	5,051	13,755	36.7%	2420	5,088	13,508	37.7%	971	2,601	8,737	29.8%
KHO	1174	2,649	7,755	34.2%	988	2,463	7,340	33.6%	432	1,369	4,771	28.7%
LLUMC	3291	7,122	14,010	50.8%	2784	6,041	13,208	45.7%	1692	3,721	9,274	40.1%
MCH	21	37	908	4.1%	35	48	800	6.0%	18	22	622	3.5%
MHMC	48	208	2,441	8.5%	126	311	2,602	12.0%	104	202	1,610	12.5%
RDCH	2103	4,610	9,194	50.1%	2195	4,291	8,741	49.1%	1241	2,899	5,849	49.6%
SARH	4250	7,981	17,381	45.9%	3178	7,691	16,369	47.0%	1225	4,045	11,311	35.8%
STBMC	3829	8,306	14,365	57.8%	3672	8,329	14,066	59.2%	2821	5,647	8,728	64.7%
STMMC	3460	7,471	12,737	58.7%	4210	8,115	12,366	65.6%	3553	6,117	8,141	75.1%
VALL	43	143	1,112	12.9%	52	182	1,116	16.3%	19	84	711	11.8%
VVGMC	1335	3,781	8,223	46.0%	1657	3,675	8,473	43.4%	1398	3,113	5,357	58.1%
Total	29108	62,029	150,561	41.2%	27937	59,107	141,894	41.7%	17196	37,931	93,301	40.7%

*Note: Bed Delay Hours excludes the first 25 minutes of each transport. ICEMA uses the Signature Locked time as indicated by the paramedic and/or the Computer Aided Dispatch (CAD).