

CITY OF SAINT HELENA

IMPROVEMENT PLANS FOR

HUNT AVENUE SIDEWALK GAP CLOSURE PROJECT

MAYOR:
GEOFF ELLSWORTH

VICE-MAYOR:
PAUL DOHRING

COUNCIL MEMBERS:
MARY KOBERSTEIN
ANNA CHOUREAU
DAVID KNUDSEN

CITY MANAGER:
MARK T. PRESTWICH

DIRECTOR OF PUBLIC WORKS/CITY ENGINEER:
ERICA AHMANN SMITHIES, P.E.

CITY PROJECT NO. R19-02



ABBREVIATIONS

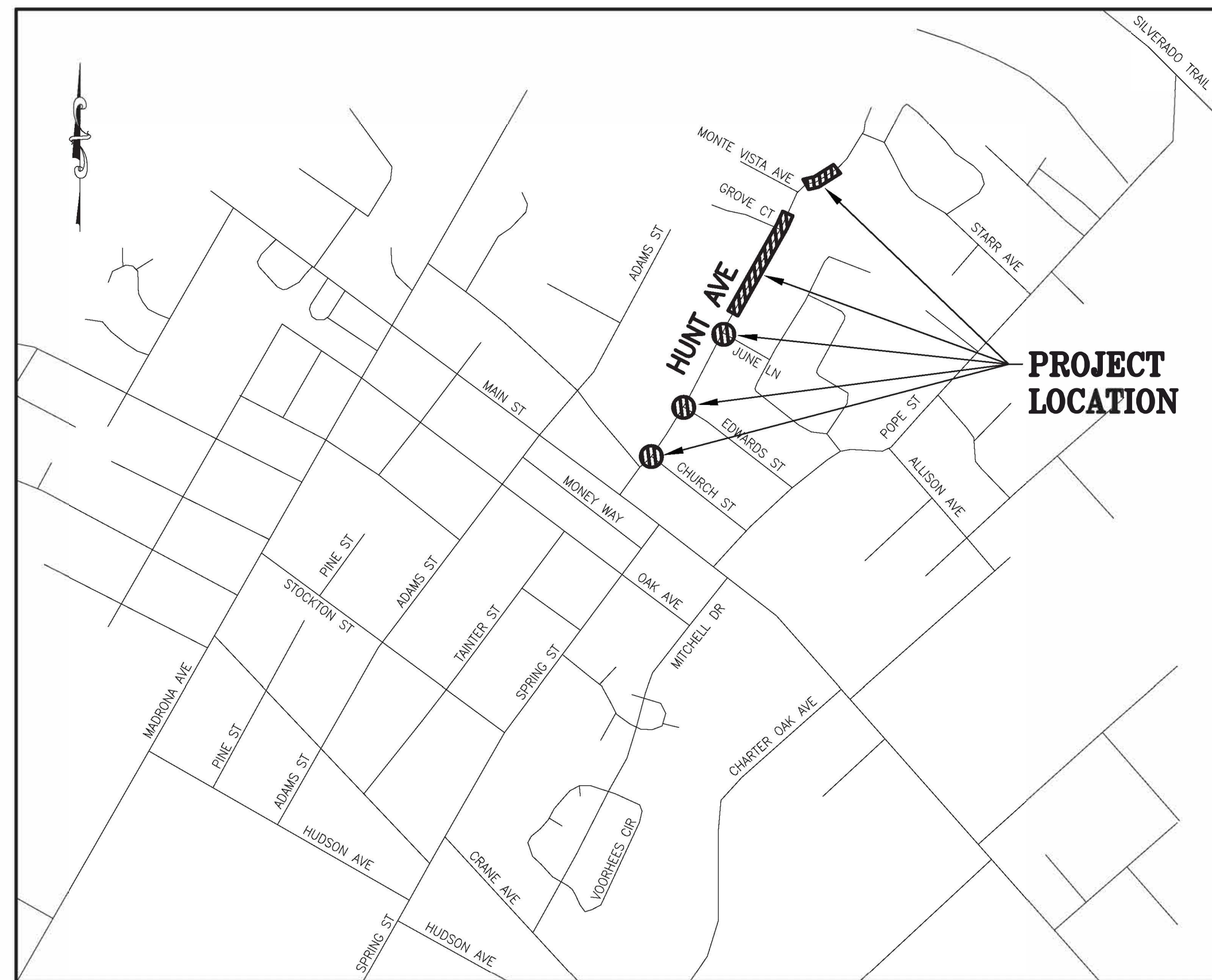
AB	AGGREGATE BASE	INV	INVERT
AC	ASPHALT CONCRETE	JP	JOINT POLE
AGGR	AGGREGATE	LF	LINEAR FEET
&	AND	LG	LIP OF GUTTER
APPROX	APPROXIMATE	LT	LEFT
APN	ASSESSOR'S PARCEL NUMBER	MAX	MAXIMUM
⊙	AT	MIN	MINIMUM
BW	BACK OF SIDEWALK	MH	MANHOLE
CB	CATCH BASIN	MON	MONUMENT
CBC	CALIFORNIA BUILDING CODE	NAD	NORTH AMERICAN DATUM
CO	CLEANOUT	NGVD	NATIONAL GEODETIC VERTICAL DATUM
CONC	CONCRETE	OH	OVER HEAD
CP	CONTROL POINT	R	RADIUS
DI	DROP INLET	RC	RELATIVE COMPACTION
DIA	DIAMETER	RT	RIGHT
D/W, DW, DMY	DRIVEWAY	R/W	RIGHT OF WAY
E, ELEC	ELECTRICAL	SD	STORM DRAIN
EG	EXISTING GROUND	SDCB	STORM DRAIN CATCH BASIN
EL, ELEV	ELEVATION	SHT	SHEET
EP	EDGE OF PAVEMENT	SPEC	SPECIFICATIONS
(E), EXIST	EXISTING	SS	SANITARY SEWER
FC	FACE OF CURB	SDMH	STORM DRAIN MANHOLE
FNC	FENCE	SSCO	SANITARY SEWER CLEANOUT
FG	FINISHED GRADE	SSMH	SANITARY SEWER MANHOLE
FL	FIRE HYDRANT	STA	STATION
FL [FLOW LINE	STD	STANDARD
FS	FINISHED SURFACE	SWK	SIDEWALK
FT	FEET	TC	TOP OF CURB
G	GAS	TYP	TYPICAL
GB	GRADE BREAK	TG	TOP OF GRATE
GV	GATE VALVE OR GAS VALVE	W/W	WITH
HDPE	HIGH DENSITY POLYETHYLENE	WM	WATER METER

LEGEND

	DETAIL NUMBER
	SHEET NUMBER
	TRUNCATED DOMES - TRUNCATED DOMES TO BE WET SET AND MEET CURRENT CALIFORNIA BUILDING CODE STANDARDS.
	ASPHALT SLUG - SEE DETAIL SHEET D7
	ROW OR PROPERTY LINE
	FLOW DIRECTION ARROW

APPROVED BY:

ERICA AHMANN SMITHIES P.E. DATE 5/22/19
DIRECTOR OF PUBLIC WORKS/CITY ENGINEER



VICINITY MAP
NTS

INDEX TO SHEETS

SHEET NO.	TITLE
G1	COVER SHEET
C2	SIDEWALK PLAN - 1
C3	SIDEWALK PLAN - 2
D4	ADA CURB RAMPS - CHURCH ST & JUNE LN
D5	ADA CURB RAMPS - EDWARDS ST
D6	770 AND 830 HUNT AVE SIDEWALK PLAN
D7	STORM DRAIN PROFILES & DETAILS

GENERAL NOTES

- ALL WORKMANSHIP, MATERIALS AND CONSTRUCTION SHALL CONFORM TO THE CITY OF SAINT HELENA STANDARD PLANS AND DETAILS, THE CONSTRUCTION SPECIFICATIONS FOR PUBLIC IMPROVEMENTS, THE SPECIAL PROVISIONS FOR THIS PROJECT AND THE STATE STANDARD SPECIFICATIONS AND STANDARD PLANS. THE CONTRACTOR IS RESPONSIBLE FOR UNDERSTANDING ALL STANDARDS PERTAINING TO THIS PROJECT.
- THE CONTRACTOR SHALL CALL UNDERGROUND SERVICE ALERT (USA NORTH) AT 811 NO LESS THAN 2 WORKING DAYS PRIOR TO ANY EXCAVATION FOR MARKOUTS OF EXISTING UNDERGROUND FACILITIES.
- THE LOCATIONS OF UNDERGROUND UTILITIES AND OTHER OBSTACLES SHOWN ON THE PLANS ARE BASED ON THE BEST AVAILABLE INFORMATION. THE CONTRACTOR SHALL POTHOLE AND DETERMINE THE EXACT LOCATION OF ALL POTENTIAL CONFLICTS IN ACCORDANCE WITH U.S.A. LAWS AND THESE SPECIAL PROVISIONS. THE CONTRACTOR IS CAUTIONED THAT THE PLANS MAY NOT INCLUDE ALL EXISTING UTILITIES.
- IF AN UNMARKED UTILITY IS ENCOUNTERED, OR IF UNABLE TO LOCATE A MARKED UTILITY AFTER EXCAVATING TO THE LIMITS SPECIFIED BY U.S.A. LAWS, THE CONTRACTOR SHALL IMMEDIATELY NOTIFY THE OWNER OF THAT UTILITY AND THE CITY ENGINEER.
- THE CONTRACTOR SHALL ONLY REMOVE EXISTING TREES OR SHRUBS AS NOTED ON THE PLANS OR AS DIRECTED BY THE ENGINEER. TRIM BUSHES TO PROVIDE CLEAR PATH OF TRAVEL ON SIDEWALK.
- TRAFFIC STRIPES, RAISED PAVEMENT MARKERS AND PAVEMENT MARKINGS DAMAGED DUE TO THE CONTRACTOR'S OPERATIONS SHALL BE REPLACED PER CITY OF SAINT HELENA TRAFFIC STANDARDS PART III, TRAFFIC MARKINGS. PATCHING OF DAMAGED MARKINGS WILL NOT BE ALLOWED WITHOUT PRIOR APPROVAL FROM ENGINEERING. ALL DAMAGED RAISED PAVEMENT (NON-REFLECTIVE) MARKERS MUST BE CERAMIC.
- OVERHEAD UTILITY SERVICE DROPS ARE NOT SHOWN ON THE PLANS. THE CONTRACTOR SHALL INVESTIGATE THE SITE AND BE AWARE OF LIMITED OVERHEAD CLEARANCES.
- EXCAVATED MATERIAL SHALL NOT BE PLACED DIRECTLY ON ANY STREET, ALLEY, OR SIDEWALK AT ANY TIME UNLESS APPROVED BY THE ENGINEER. IF SO APPROVED, THE AREA WHERE THE MATERIAL IS PLACED MUST BE COMPLETELY CLEANED BY THE END OF THE WORK DAY OR AS REQUESTED BY THE ENGINEER.
- CONTRACTOR TO ADJUST WATER METER BOXES TO GRADE.

SURVEY NOTES

- BOUNDARY: THIS DOES NOT CONSTITUTE A BOUNDARY SURVEY. ALL PARCEL LINES ARE FROM NAPA COUNTY G.I.S., AND ARE APPROXIMATE ONLY.
- BASIS OF COORDINATES: COORDINATES, BEARINGS, AND ELEVATIONS ARE ASSUMED. A SURVEY CONTROL TABLE IS PROVIDED BELOW.

POINT #	NORTHING	EASTING	ELEV	DESC
1	1946354.55	642790.46	245.58	SET X
2	1946772.64	6428123.93	243.91	SET X
3	1946997.20	6428246.15	238.18	SET X
4	1947377.16	6428458.22	234.42	SET X
5	1947586.28	6428570.47	231.82	SET X
6	1946963.33	6428387.91	234.98	SET GIN
7	1947363.33	6428372.35	235.91	SET X
8	1946071.30	6427704.99	246.70	SET X



DATE: MAY 2019
DESIGNED BY: LWTP/PAL
DRAWN BY: LWTP/PAL
CHECKED BY: LE

PROJECT NO.
18-0112-09

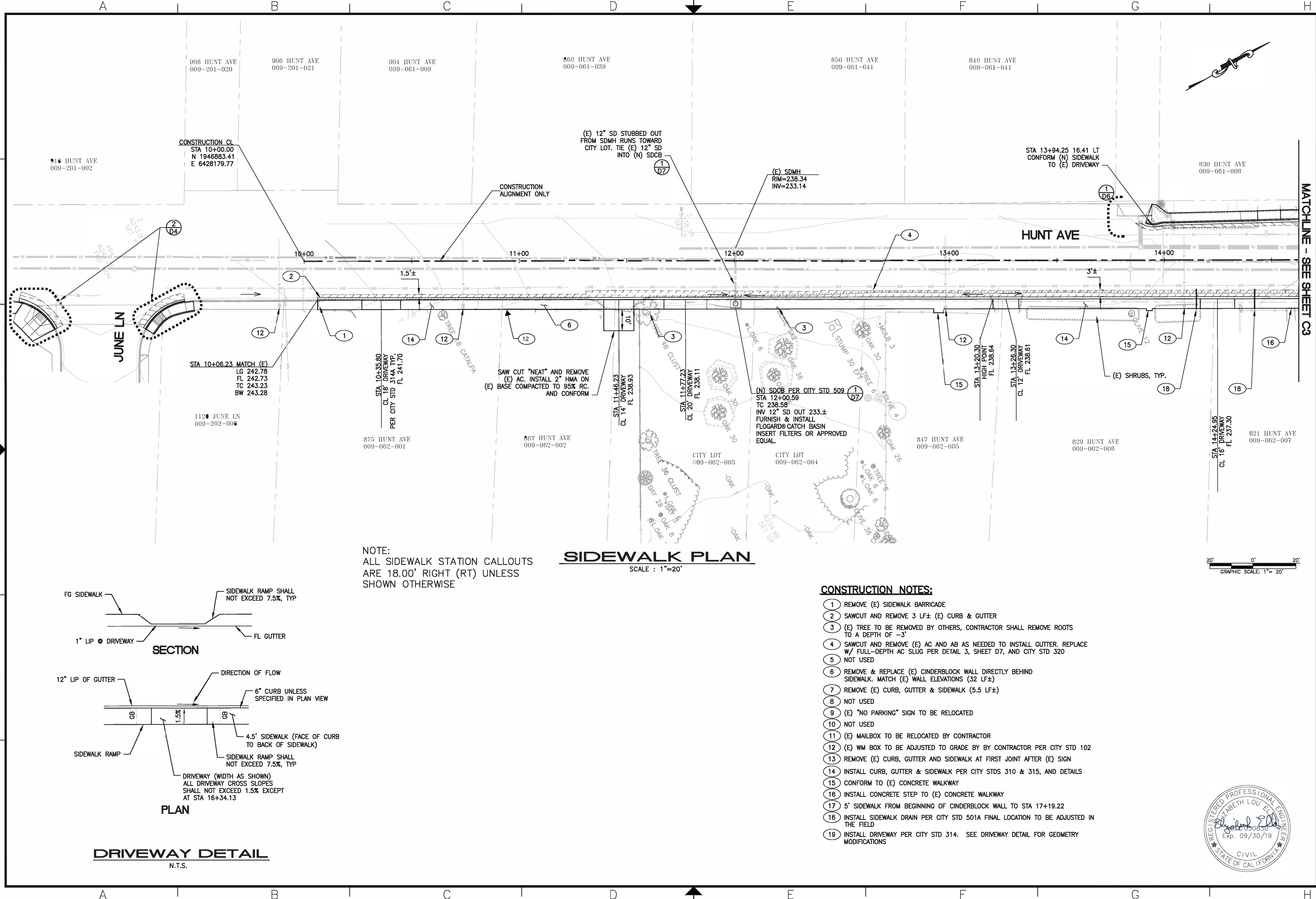
GREEN VALLEY
CONSULTING ENGINEERS
335 Tesconi Circle Santa Rosa, CA 95401
Tel: (707) 576-0888 Fax: (707) 576-3877

CITY OF SAINT HELENA
PUBLIC WORKS DEPARTMENT
1572 RAILROAD AVE. ST. HELENA, CALIFORNIA, 94574
PH: 707-968-2658



HUNT AVENUE SIDEWALK GAP CLOSURE PROJECT
COVER SHEET

SHEET
G1
1 OF 7



DATE: MAY 2019
 DESIGNED BY: LWTP/PAL
 DRAWN BY: LWTP/PAL
 CHECKED BY: LE

PROJECT NO.
 18-0112-09

GREEN VALLEY
 CONSULTING ENGINEERS
 335 Tasconi Circle Santa Rosa, CA 95401
 Tel: (707) 576-0888 Fax: (707) 576-3877

CITY OF ST. HELENA
 PUBLIC WORKS DEPARTMENT
 1572 RAILROAD AVE. ST. HELENA, CALIFORNIA, 94574
 PH. 707-968-2658



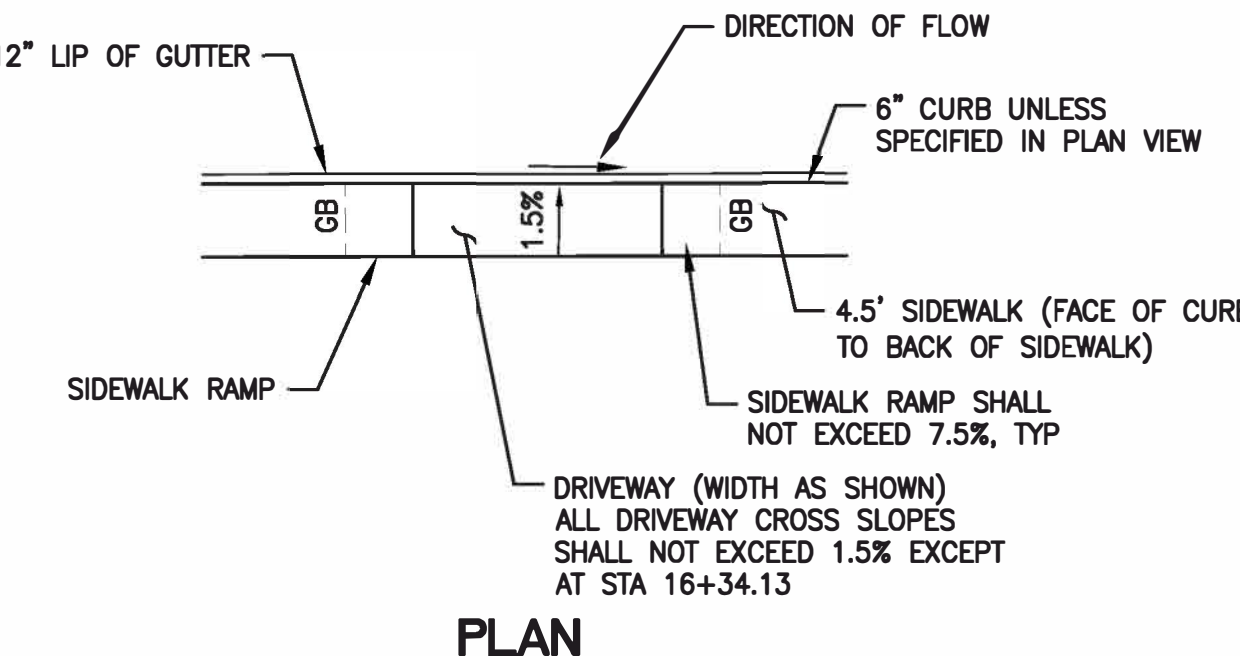
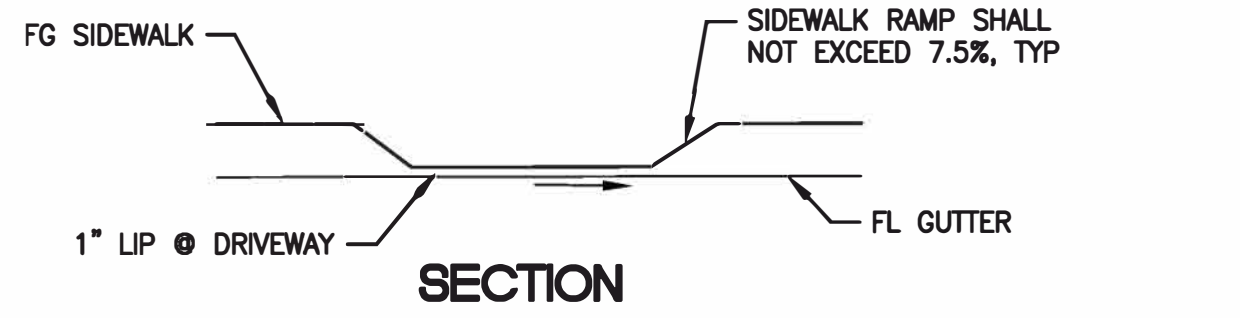
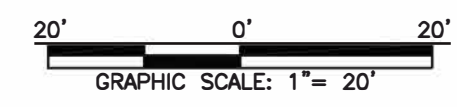
HUNT AVENUE SIDEWALK GAP CLOSURE PROJECT
 SIDEWALK PLAN - 1

SHEET
C2
 2 OF 7

MATCHLINE - SEE SHEET C3

NOTE:
 ALL SIDEWALK STATION CALLOUTS
 ARE 18.00' RIGHT (RT) UNLESS
 SHOWN OTHERWISE

SIDEWALK PLAN
 SCALE : 1"=20'

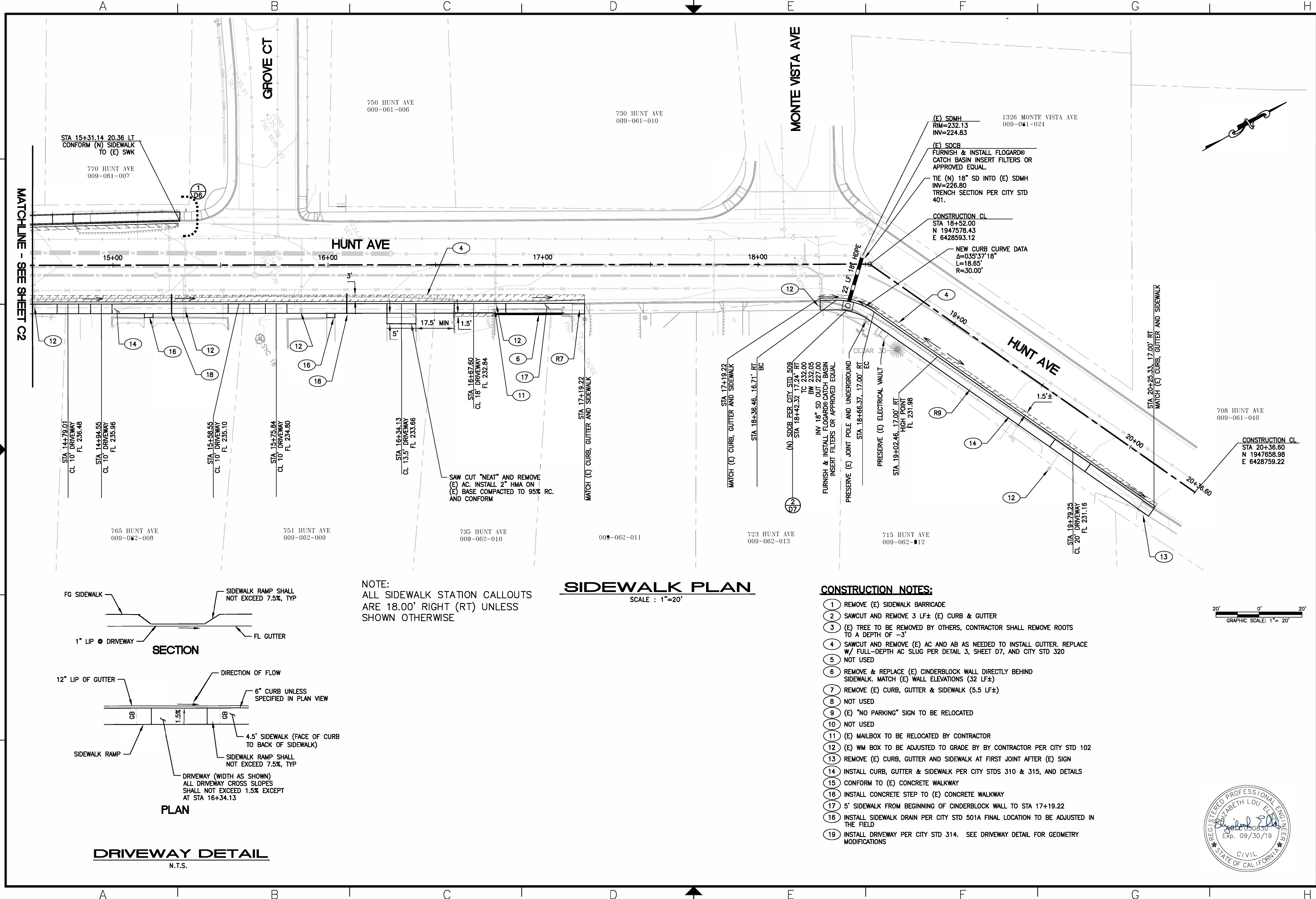


DRIVEWAY DETAIL
 N.T.S.

CONSTRUCTION NOTES:

- 1 REMOVE (E) SIDEWALK BARRICADE
- 2 SAWCUT AND REMOVE 3 LF± (E) CURB & GUTTER
- 3 (E) TREE TO BE REMOVED BY OTHERS, CONTRACTOR SHALL REMOVE ROOTS TO A DEPTH OF -3'
- 4 SAWCUT AND REMOVE (E) AC AND AB AS NEEDED TO INSTALL GUTTER. REPLACE W/ FULL-DEPTH AC SLUG PER DETAIL 3, SHEET D7, AND CITY STD 320
- 5 NOT USED
- 6 REMOVE & REPLACE (E) CINDERBLOCK WALL DIRECTLY BEHIND SIDEWALK. MATCH (E) WALL ELEVATIONS (32 LF±)
- 7 REMOVE (E) CURB, GUTTER & SIDEWALK (5.5 LF±)
- 8 NOT USED
- 9 (E) "NO PARKING" SIGN TO BE RELOCATED
- 10 NOT USED
- 11 (E) MAILBOX TO BE RELOCATED BY CONTRACTOR
- 12 (E) WM BOX TO BE ADJUSTED TO GRADE BY BY CONTRACTOR PER CITY STD 102
- 13 REMOVE (E) CURB, GUTTER AND SIDEWALK AT FIRST JOINT AFTER (E) SIGN
- 14 INSTALL CURB, GUTTER & SIDEWALK PER CITY STDS 310 & 315, AND DETAILS CONFORM TO (E) CONCRETE WALKWAY
- 15 INSTALL CONCRETE STEP TO (E) CONCRETE WALKWAY
- 16 5' SIDEWALK FROM BEGINNING OF CINDERBLOCK WALL TO STA 17+19.22
- 17 INSTALL SIDEWALK DRAIN PER CITY STD 501A FINAL LOCATION TO BE ADJUSTED IN THE FIELD
- 18 INSTALL DRIVEWAY PER CITY STD 314. SEE DRIVEWAY DETAIL FOR GEOMETRY MODIFICATIONS



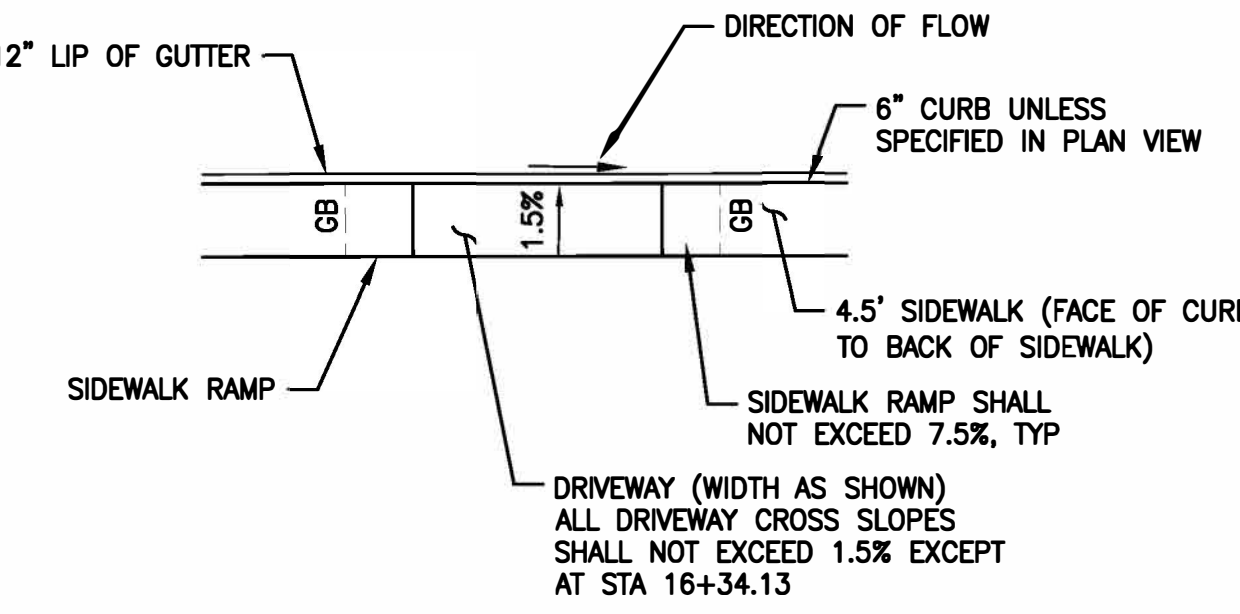
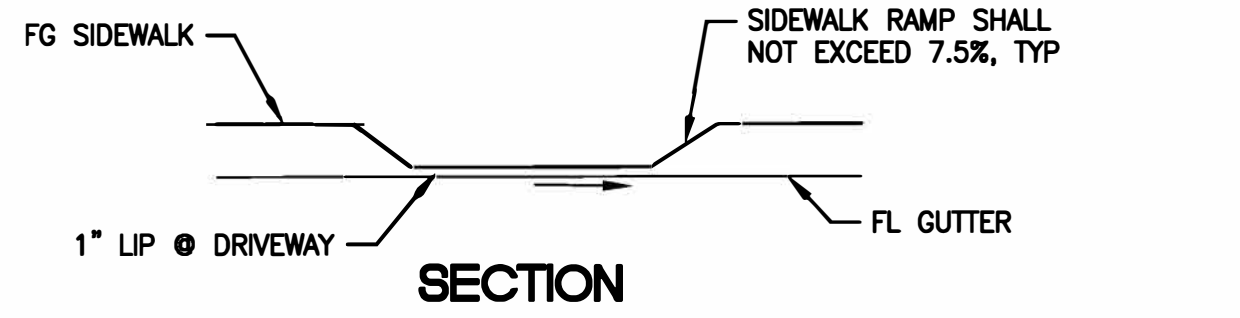


SIDEWALK PLAN
SCALE : 1"=20'

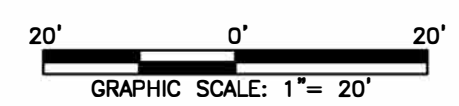
NOTE:
ALL SIDEWALK STATION CALLOUTS
ARE 18.00' RIGHT (RT) UNLESS
SHOWN OTHERWISE

CONSTRUCTION NOTES:

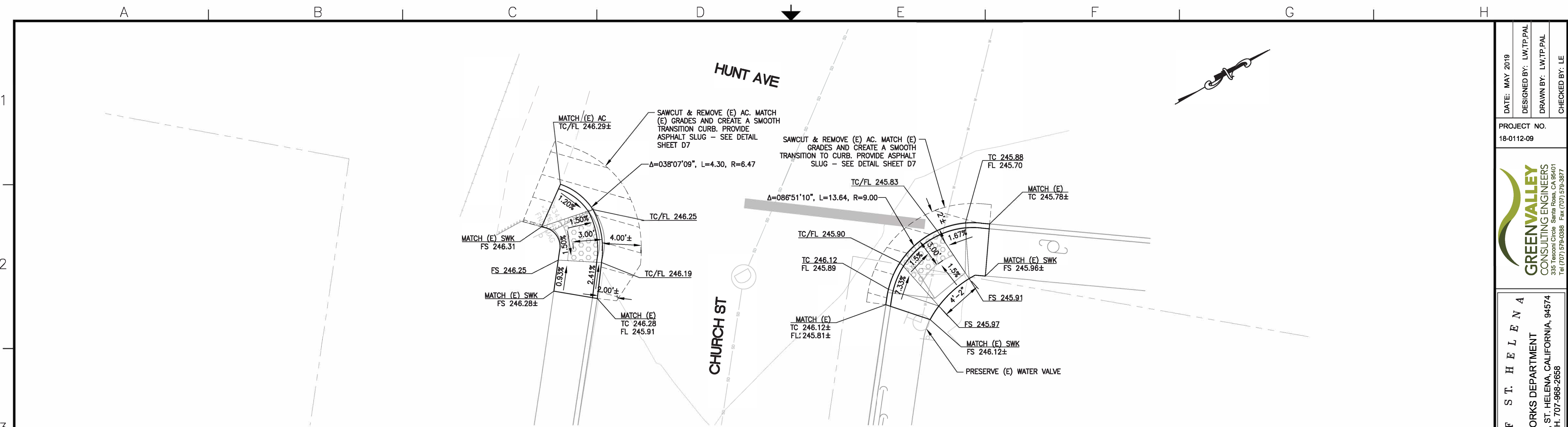
- 1 REMOVE (E) SIDEWALK BARRICADE
- 2 SAWCUT AND REMOVE 3 LF± (E) CURB & GUTTER
- 3 (E) TREE TO BE REMOVED BY OTHERS, CONTRACTOR SHALL REMOVE ROOTS TO A DEPTH OF -3'
- 4 SAWCUT AND REMOVE (E) AC AND AB AS NEEDED TO INSTALL GUTTER. REPLACE W/ FULL-DEPTH AC SLUG PER DETAIL 3, SHEET D7, AND CITY STD 320
- 5 NOT USED
- 6 REMOVE & REPLACE (E) CINDERBLOCK WALL DIRECTLY BEHIND SIDEWALK. MATCH (E) WALL ELEVATIONS (32 LF±)
- 7 REMOVE (E) CURB, GUTTER & SIDEWALK (5.5 LF±)
- 8 NOT USED
- 9 (E) "NO PARKING" SIGN TO BE RELOCATED
- 10 NOT USED
- 11 (E) MAILBOX TO BE RELOCATED BY CONTRACTOR
- 12 (E) WM BOX TO BE ADJUSTED TO GRADE BY BY CONTRACTOR PER CITY STD 102
- 13 REMOVE (E) CURB, GUTTER AND SIDEWALK AT FIRST JOINT AFTER (E) SIGN
- 14 INSTALL CURB, GUTTER & SIDEWALK PER CITY STDS 310 & 315, AND DETAILS CONFORM TO (E) CONCRETE WALKWAY
- 15 INSTALL CONCRETE STEP TO (E) CONCRETE WALKWAY
- 16 5' SIDEWALK FROM BEGINNING OF CINDERBLOCK WALL TO STA 17+19.22
- 17 INSTALL SIDEWALK DRAIN PER CITY STD 501A FINAL LOCATION TO BE ADJUSTED IN THE FIELD
- 18 INSTALL DRIVEWAY PER CITY STD 314. SEE DRIVEWAY DETAIL FOR GEOMETRY MODIFICATIONS



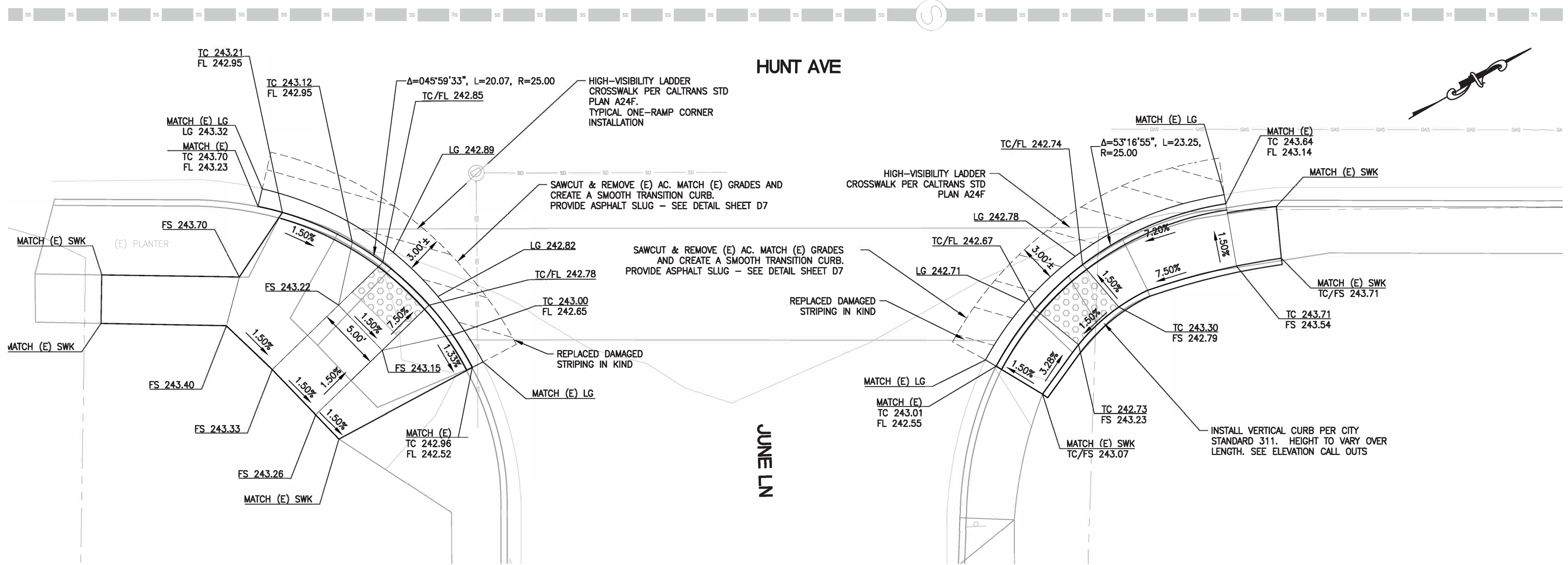
DRIVEWAY DETAIL
N.T.S.



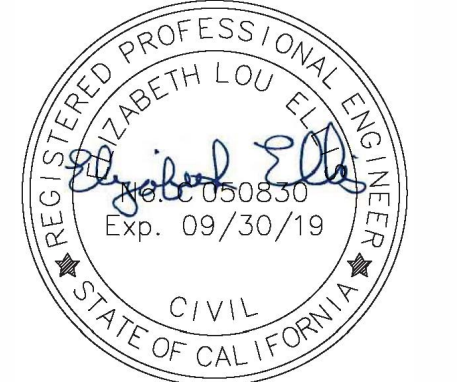
DATE: MAY 2019	DESIGNED BY: LWTP/PAL	DRAWN BY: LWTP/PAL	CHECKED BY: LE
PROJECT NO. 18-0112-09			
CITY OF ST. HELENA PUBLIC WORKS DEPARTMENT 1572 RAILROAD AVE, ST. HELENA, CALIFORNIA, 94574 PH. 707-968-2658			
HUNT AVENUE SIDEWALK GAP CLOSURE PROJECT SIDEWALK PLAN - 2			
SHEET C3 3 OF 7			



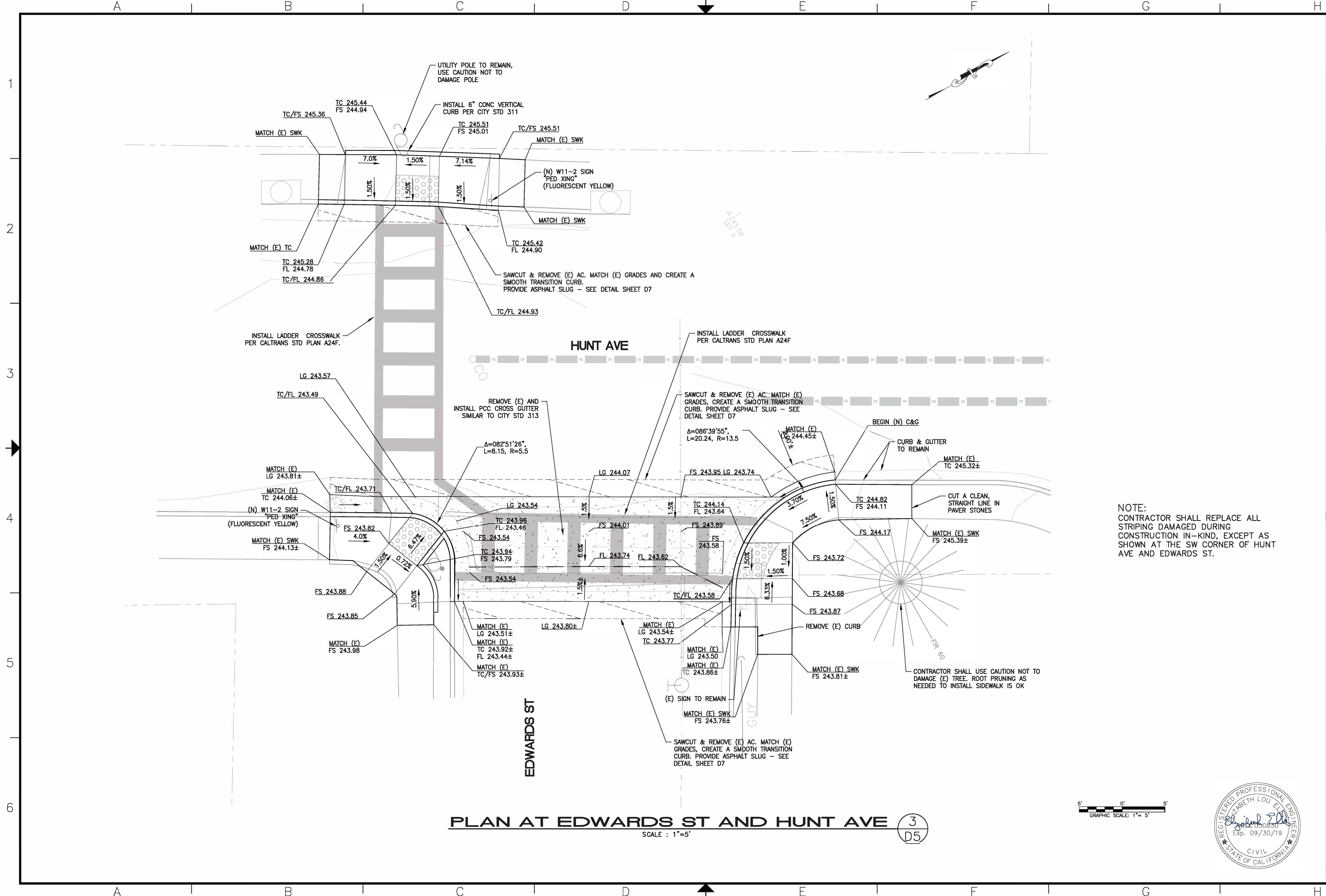
PLAN AT CHURCH ST AND HUNT AVE (1)
 SCALE : 1"=5'
 D4



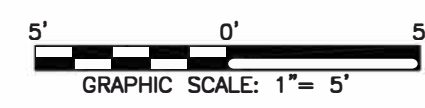
PLAN AT JUNE LN AND HUNT AVE (2)
 SCALE : 1"=5'
 D4



DATE: MAY 2019	DESIGNED BY: LWTP/PAL	PROJECT NO. 18-0112-09
DRAWN BY: LWTP/PAL	CHECKED BY: LE	GREEN VALLEY CONSULTING ENGINEERS 335 Tesconi Circle Santa Rosa, CA 95401 Tel: (707) 578-0888 Fax: (707) 578-3877
CITY OF ST. HELENA PUBLIC WORKS DEPARTMENT 1572 RAILROAD AVE. ST. HELENA, CALIFORNIA, 94574 PH. 707-968-2658		
HUNT AVENUE SIDEWALK GAP CLOSURE PROJECT ADA CURB RAMPS - CHURCH ST & JUNE LN		
SHEET D4 4 OF 7		



PLAN AT EDWARDS ST AND HUNT AVE 3
 SCALE : 1"=5'



NOTE:
 CONTRACTOR SHALL REPLACE ALL STRIPING DAMAGED DURING CONSTRUCTION IN-KIND, EXCEPT AS SHOWN AT THE SW CORNER OF HUNT AVE AND EDWARDS ST.

DATE: MAY 2019
 DESIGNED BY: LWTP/PAL
 DRAWN BY: LWTP/PAL
 CHECKED BY: LE

PROJECT NO.
 18-0112-09

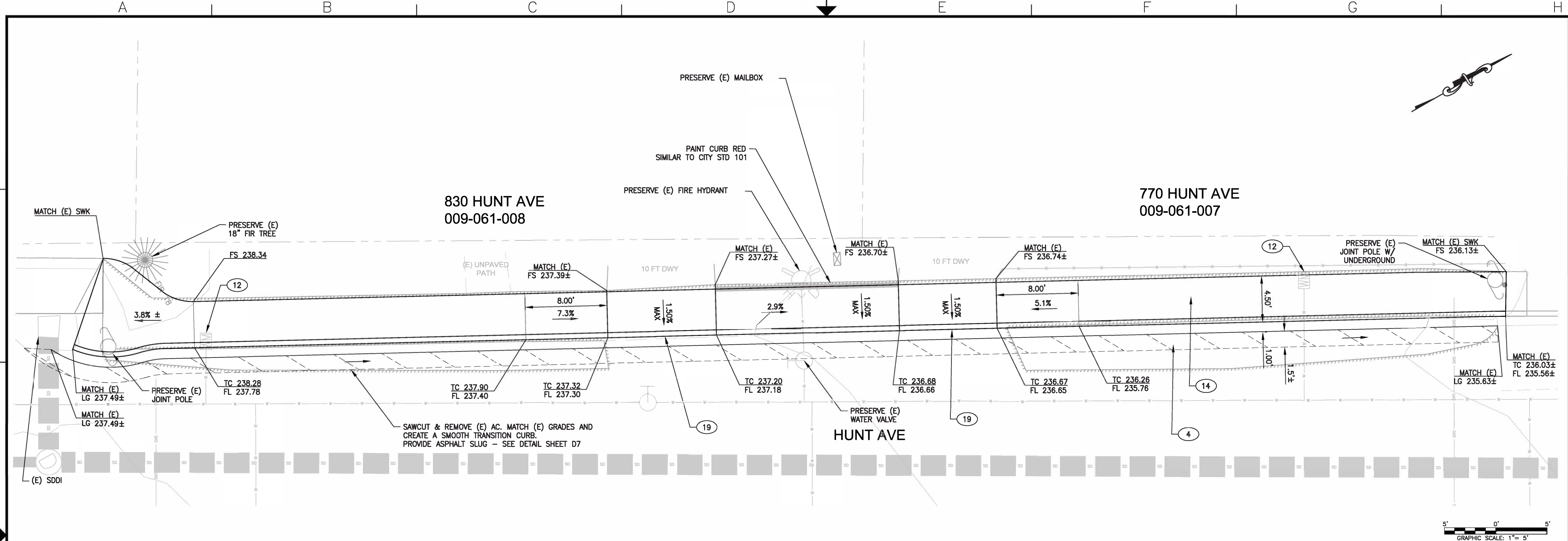


CITY OF ST. HELENA
 PUBLIC WORKS DEPARTMENT
 1572 RAILROAD AVE, ST. HELENA, CALIFORNIA, 94574
 PH. 707-968-2658

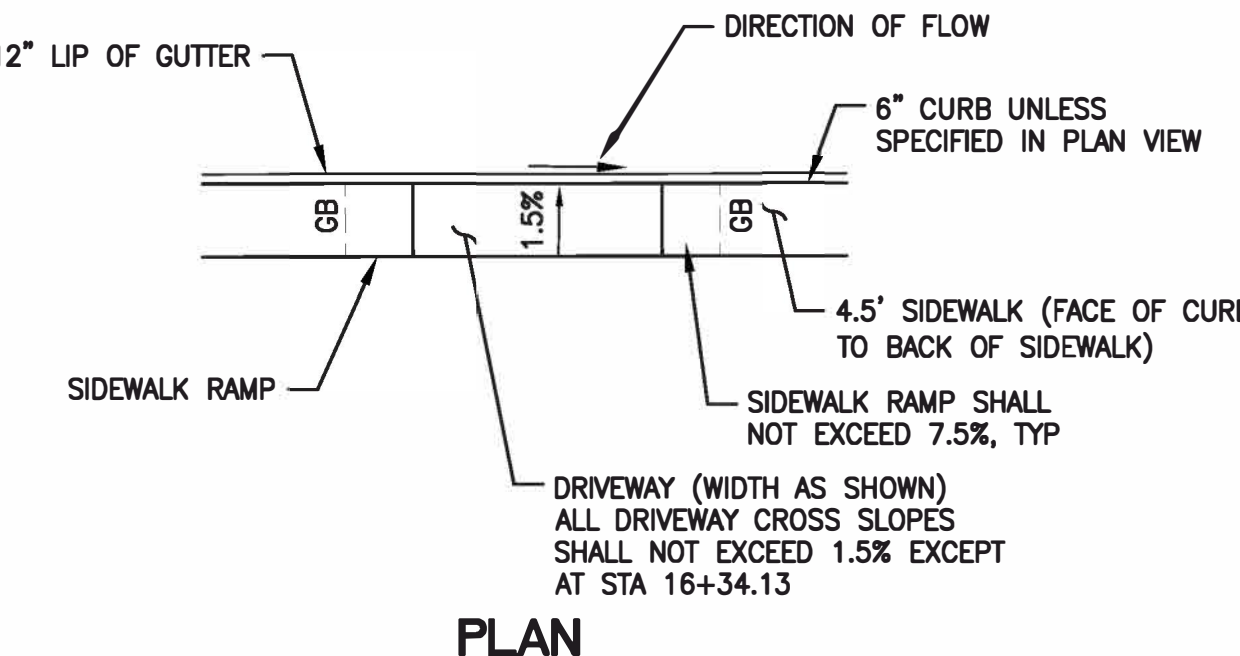
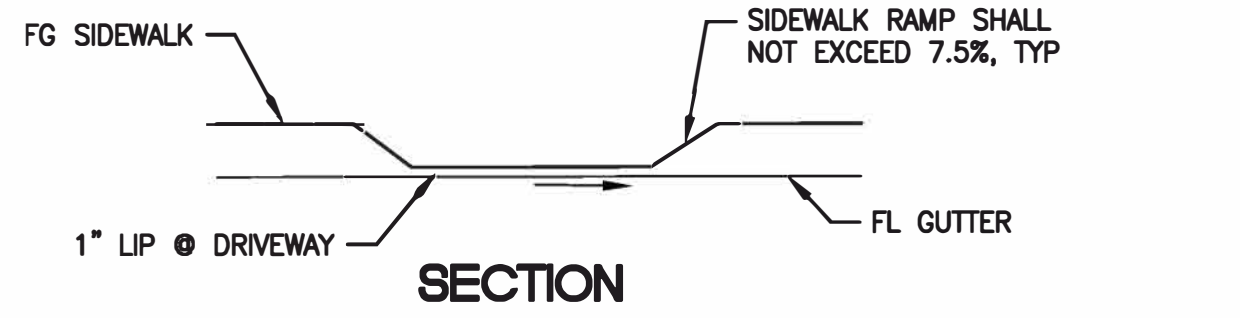


HUNT AVENUE SIDEWALK GAP CLOSURE PROJECT
 ADA CURB RAMPS - EDWARDS ST

SHEET
D5
 5 OF 7



PLAN AT 770 AND 830 HUNT AVE
SCALE : 1"=5'



DRIVEWAY DETAIL
N.T.S.

CONSTRUCTION NOTES:

- 1 REMOVE (E) SIDEWALK BARRICADE
- 2 SAWCUT AND REMOVE 3 LF± (E) CURB & GUTTER
- 3 (E) TREE TO BE REMOVED BY OTHERS, CONTRACTOR SHALL REMOVE ROOTS TO A DEPTH OF -3'
- 4 SAWCUT AND REMOVE (E) AC AND AB AS NEEDED TO INSTALL GUTTER. REPLACE W/ FULL-DEPTH AC SLUG PER DETAIL 3, SHEET D7, AND CITY STD 320
- 5 NOT USED
- 6 REMOVE & REPLACE (E) CINDERBLOCK WALL DIRECTLY BEHIND SIDEWALK. MATCH (E) WALL ELEVATIONS (32 LF±)
- 7 REMOVE (E) CURB, GUTTER & SIDEWALK (5.5 LF±)
- 8 NOT USED
- 9 (E) "NO PARKING" SIGN TO BE RELOCATED
- 10 NOT USED
- 11 (E) MAILBOX TO BE RELOCATED BY CONTRACTOR
- 12 (E) WM BOX TO BE ADJUSTED TO GRADE BY BY CONTRACTOR PER CITY STD 102
- 13 REMOVE (E) CURB, GUTTER AND SIDEWALK AT FIRST JOINT AFTER (E) SIGN
- 14 INSTALL CURB, GUTTER & SIDEWALK PER CITY STDS 310 & 315, AND DETAILS
- 15 CONFORM TO (E) CONCRETE WALKWAY
- 16 INSTALL CONCRETE STEP TO (E) CONCRETE WALKWAY
- 17 5' SIDEWALK FROM BEGINNING OF CINDERBLOCK WALL TO STA 17+19.22
- 18 INSTALL SIDEWALK DRAIN PER CITY STD 501A FINAL LOCATION TO BE ADJUSTED IN THE FIELD
- 19 INSTALL DRIVEWAY PER CITY STD 314. SEE DRIVEWAY DETAIL FOR GEOMETRY MODIFICATIONS



DATE: MAY 2019
DESIGNED BY: LWTP/PAL
DRAWN BY: LWTP/PAL
CHECKED BY: LE

PROJECT NO.
18-0112-09

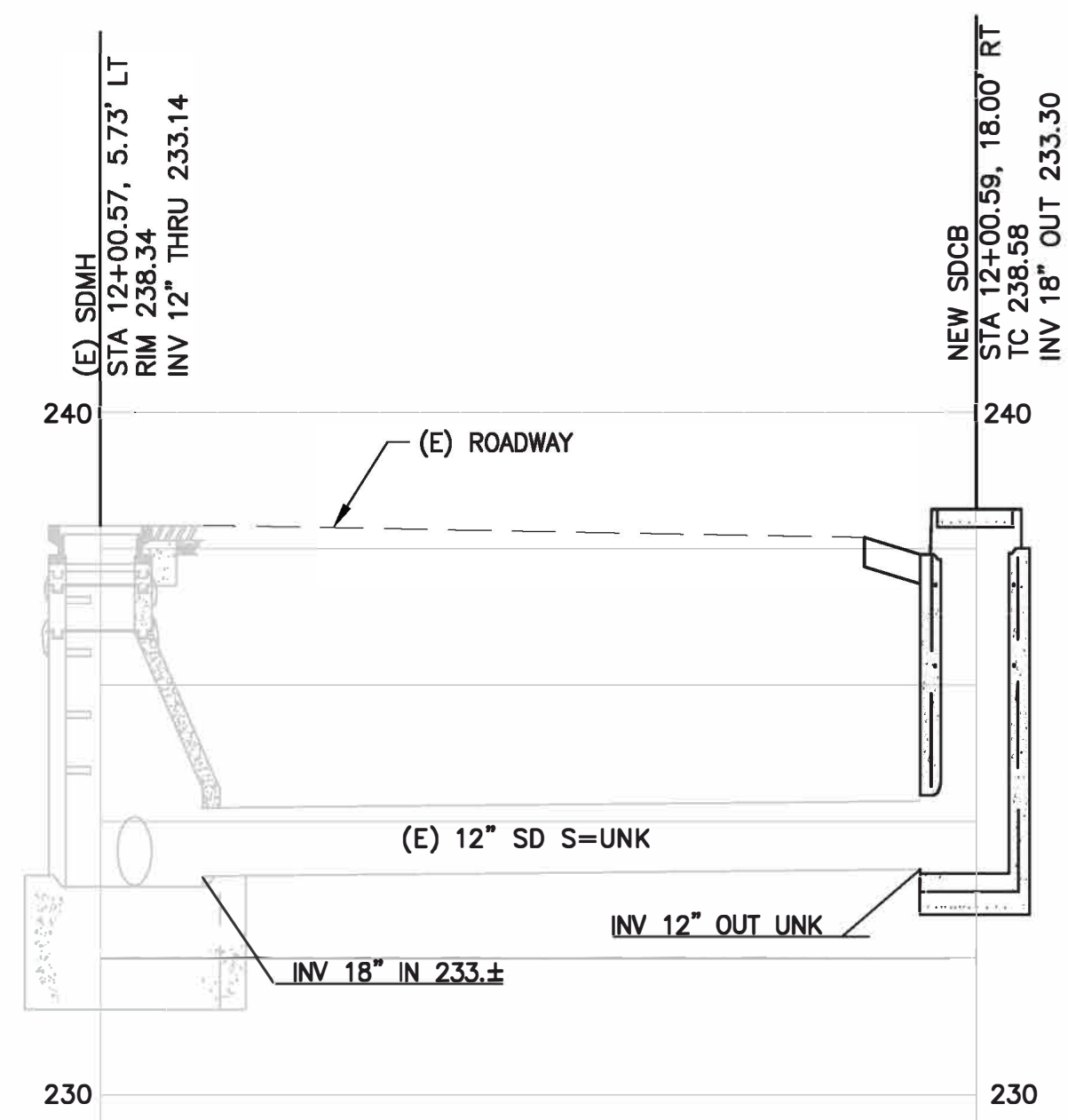


CITY OF ST. HELENA
PUBLIC WORKS DEPARTMENT
1572 RAILROAD AVE, ST. HELENA, CALIFORNIA, 94574
PH: 707-968-2858



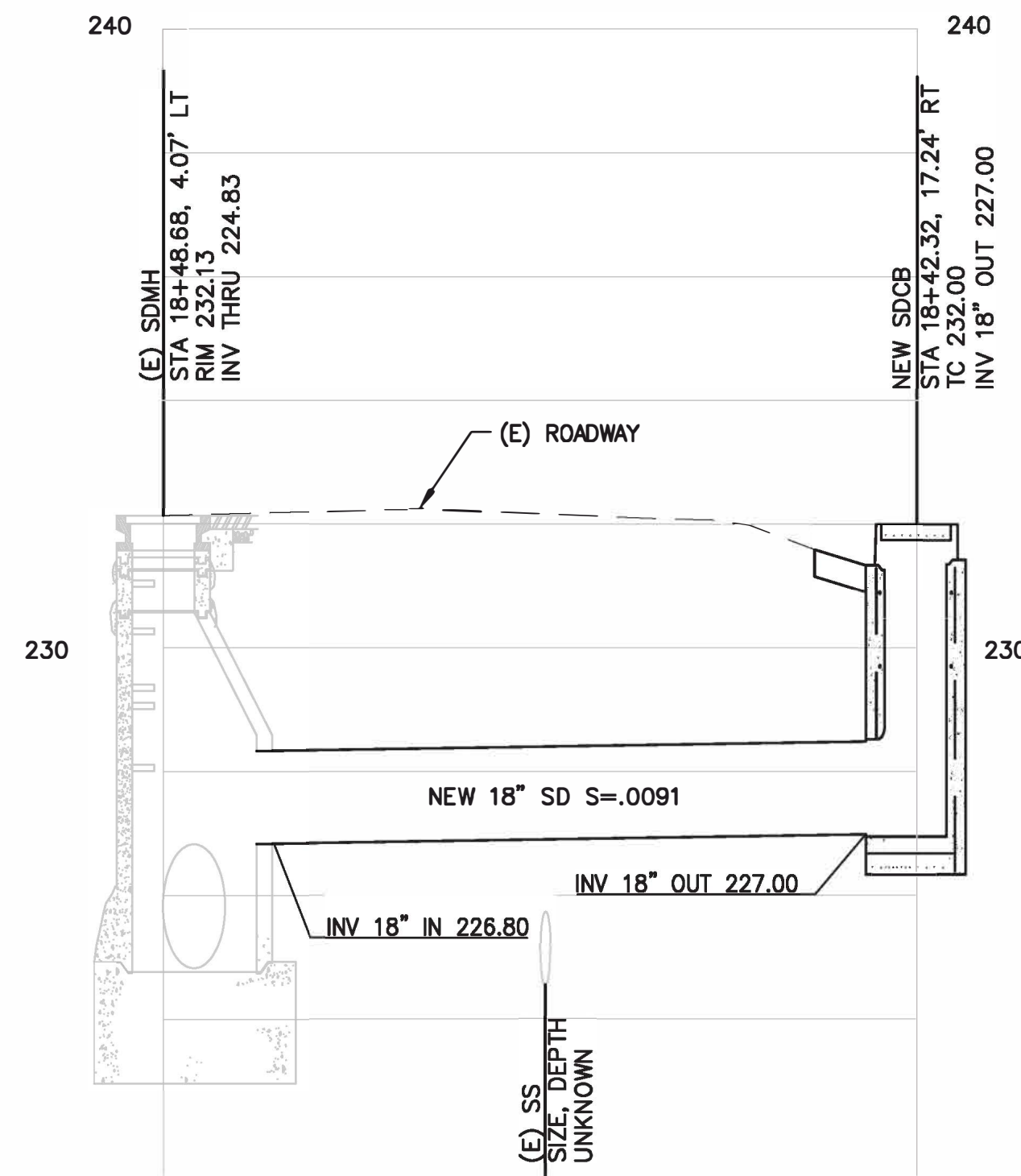
HUNT AVENUE SIDEWALK GAP CLOSURE PROJECT
SIDEWALK - 770 & 830 HUNT AVENUE

SHEET
D6
6 OF 7



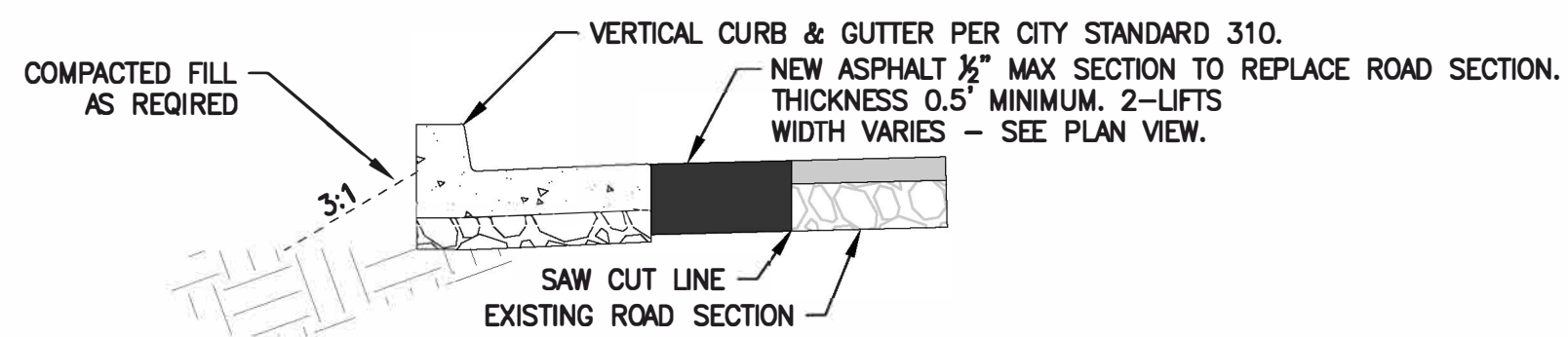
STORMDRAIN CATCH BASIN @ 12+00.59
 SCALE : HORZ 1"=5' VERT 1"=10'

1
D7



STORMDRAIN CATCH BASIN @ 18+48.68
 SCALE : HORZ 1"=5' VERT 1"=10'

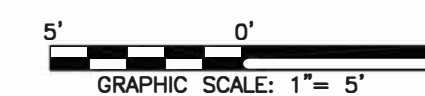
2
D7



ASPHALT SLUG

N.T.S.

3
D7

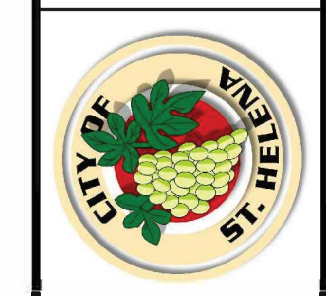


DATE: MAY 2019
 DESIGNED BY: LWTP/PAL
 DRAWN BY: LWTP/PAL
 CHECKED BY: LE

PROJECT NO.
 18-0112-09

GREEN VALLEY
 CONSULTING ENGINEERS
 335 Tesconi Circle Santa Rosa, CA 95401
 Tel (707) 578-0888 Fax (707) 578-3877

CITY OF ST. HELENA
 PUBLIC WORKS DEPARTMENT
 1572 RAILROAD AVE, ST. HELENA, CALIFORNIA, 94574
 PH. 707-968-2658



HUNT AVENUE SIDEWALK GAP CLOSURE PROJECT
STORM DRAIN PROFILES & DETAILS

SHEET
D7
 7 OF 7