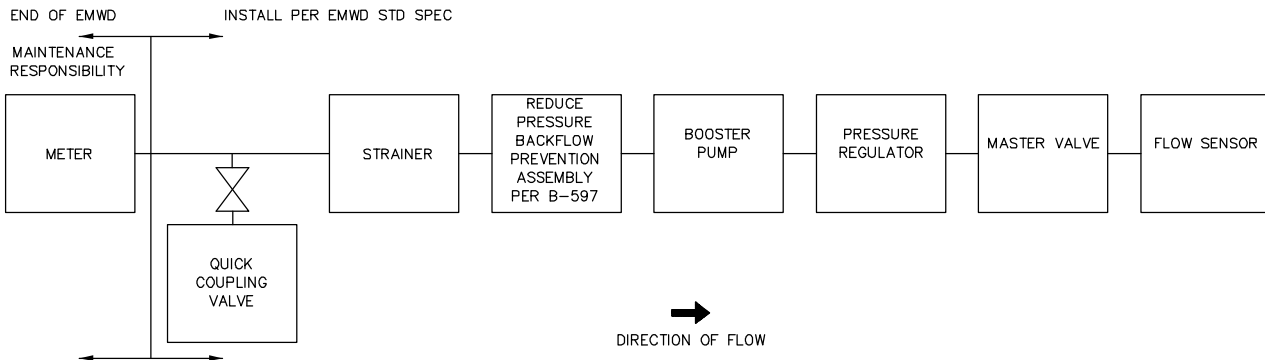


CITY OF PERRIS

DEVELOPMENT SERVICES DEPARTMENT
PLANNING DIVISION

135 NORTH "D" STREET, PERRIS, CA, 92570-2200
TEL: (951) 943-5003 FAX(951) 943-8379

RECYCLED WATER DETAIL



NOTES:

- 1) STRAINER SHALL BE AT LEAST THE SAME NOMINAL SIZE AS THE METER SIZE.
- 2) BACKFLOW PREVENTER SHALL BE THE SAME NOMINAL SIZE AS THE METER SIZE.
- 3) BACKFLOW PREVENTER REQUIRED ON USER SITES USING A FERTIGATION SYSTEM OR AS REQUIRED BY THE DISTRICT.
- 4) STRAINER AND BACKFLOW PREVENTER SHALL BE LOCATED ABOVE GROUND IN A PROTECTED ENCLOSURE.
- 5) BOOSTER PUMP IF REQUIRED NEEDS TO HAVE A LOW FLOW/PRESSURE SWITCH.

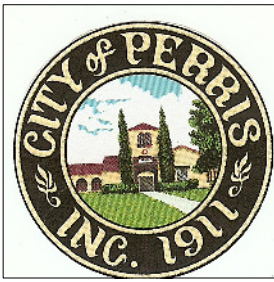
3/08

CITY OF PERRIS
CITY LANDSCAPE ARCHITECT

Ron Kammeier
RON KAMMEYER

EMWD RECYCLED WATER POC

R-1



CITY OF PERRIS

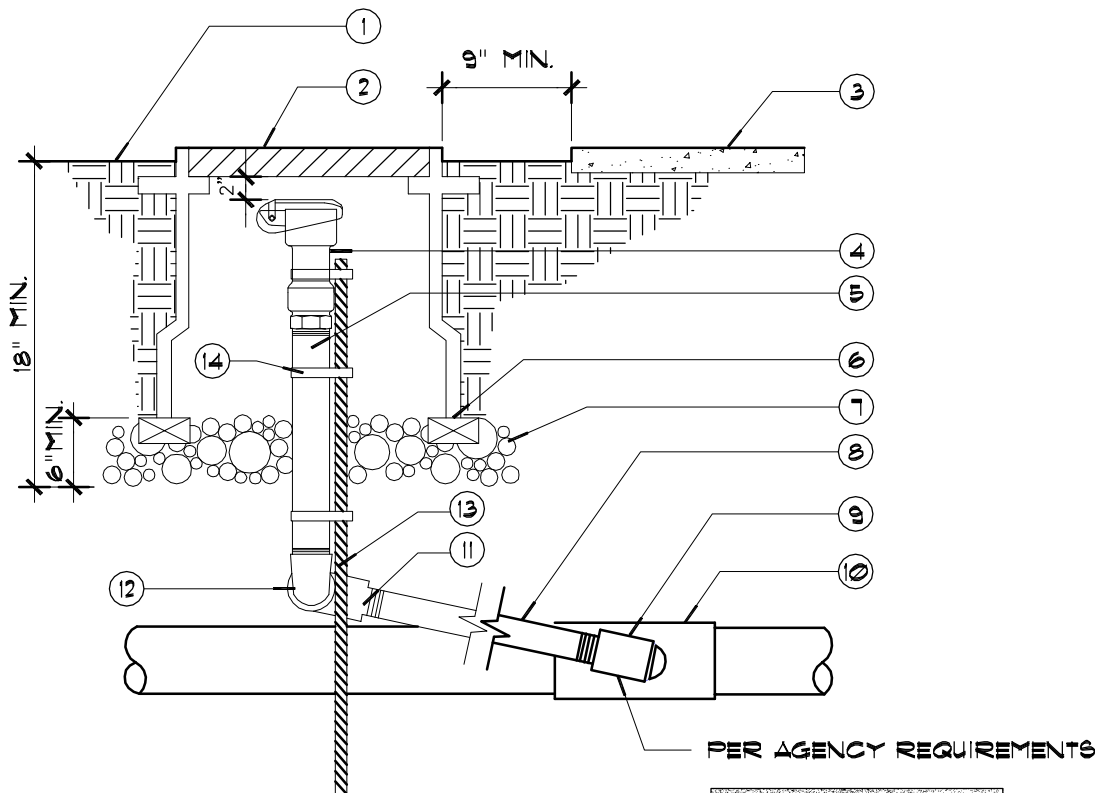
DEVELOPMENT SERVICES DEPARTMENT
PLANNING DIVISION

135 NORTH "D" STREET, PERRIS, CA, 92570-2200
TEL: (951) 943-5003 FAX(951) 943-8379

RECYCLED WATER DETAIL

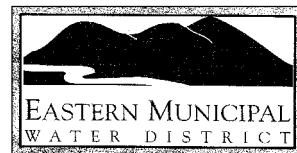
LEGEND:

- | | |
|--|---------------------------------------|
| 1) FINISH GRADE | 7) 3/4" WASHED CRUSHED AGGREGATE BASE |
| 2) PURPLE VALVE BOX | 8) BRASS NIPPLE |
| 3) STRUCTURAL HARDSCAPE WHERE OCCURS | 9) BRASS 90 STREET ELL FITTING |
| 4) QUICK COUPLING VALVE WITH LOCKING PURPLE COVER AND ACME THREAD | 10) PRESSURE SUPPLY LINE |
| 5) BRASS NIPPLE | 11) BRASS 90 STREET ELL |
| 6) BRICK (1 OF 3) | 12) BRASS 90 ELL |
| | 13) #4 REBAR STAKE (24" MIN) |
| | 14) STAINLESS STEEL SCREW CLAMP |



NOTE:

1) QUICK COUPLERS SHALL BE OF A TYPE APPROVED FOR RECYCLED WATER USE.

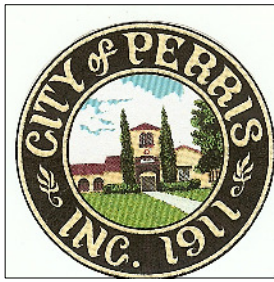


951-928-3777

3/08

CITY OF PERRIS
CITY LANDSCAPE ARCHITECT

Ron Kammeier
RON KAMMEYER

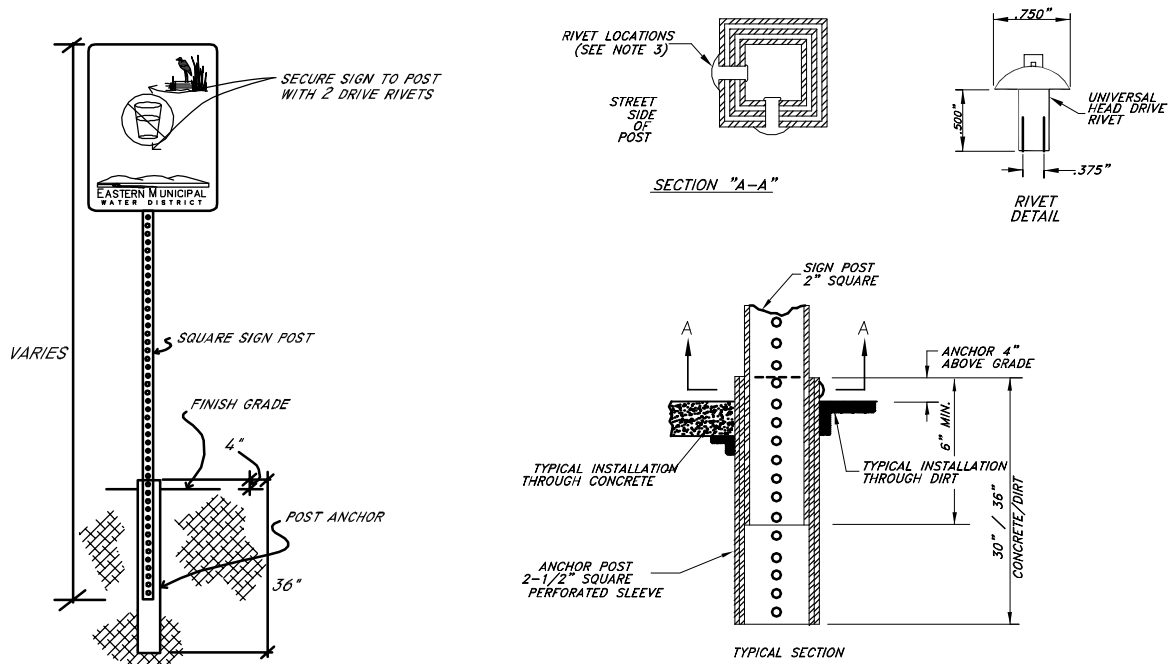


CITY OF PERRIS

DEVELOPMENT SERVICES DEPARTMENT
PLANNING DIVISION

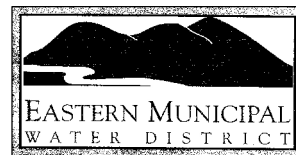
135 NORTH "D" STREET, PERRIS, CA. 92570-2200
TEL: (951) 943-5003 FAX(951) 943-8379

RECYCLED WATER DETAIL



NOTES:

- 1) SQUARE POST SHALL BE PERFORATED STEEL TUBE POSTS WITH TWO PIECE ANCHOR AND "TELESPAR" SLEEVE. THE ANCHOR AND SLEEVE ASSEMBLY SHALL CONSIST OF A 2 1/2" SQUARE BY 30" (THROUGH SIDEWALK) OR 36" (THROUGH SOIL) ANCHOR WITH A 2 1/4" SQUARE BY 18" SLEEVE.
- 2) THE NUMBER OF SIGNS, THEIR LOCATIONS, AND HEIGHTS SHALL BE PER EMWD REQUIREMENTS AND AS DIRECTED BY THE DISTRICT REPRESENTATIVE. AT A MINIMUM SIGNS SHALL BE LOCATED AT ALL PROJECT ENTRIES AND AT EACH METER CONNECTION AND MUST ALWAYS BE VISIBLE.
- 3) ANCHOR AND SLEEVE ASSEMBLIES SHALL BE DRIVEN SIMULTANEOUSLY UNTIL 4" REMAINS ABOVE GROUND LEVEL. INSTALL THE 2" GALVANIZED SQUARE SIGN POST MINIMUM 6" INTO THE ANCHOR ASSEMBLY AND SECURE IN PLACE WITH TWO 3/8" DRIVE RIVETS AS SHOWN. THE RIVETS SHALL BE INSTALLED ON THE SIDE FACING TRAFFIC FLOW AND THE SIDE OF APPROACHING TRAFFIC AS SHOWN.
- 4) ANCHOR ASSEMBLY SHALL NEVER BE SECURED IN CONCRETE FOOTING.
- 5) ADVISORY SIGN CAN BE PURCHASED FROM EMWD AT (951) 928-3777 EXT 4412.



951-928-3777

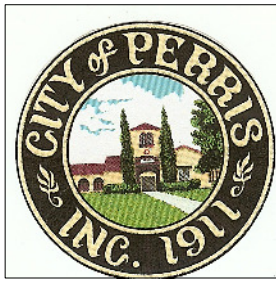
3/08

CITY OF PERRIS
CITY LANDSCAPE ARCHITECT

Ron Kammeier
RON KAMMEYER

EMWD IRRIGATION ADVISORY SIGN

R-3

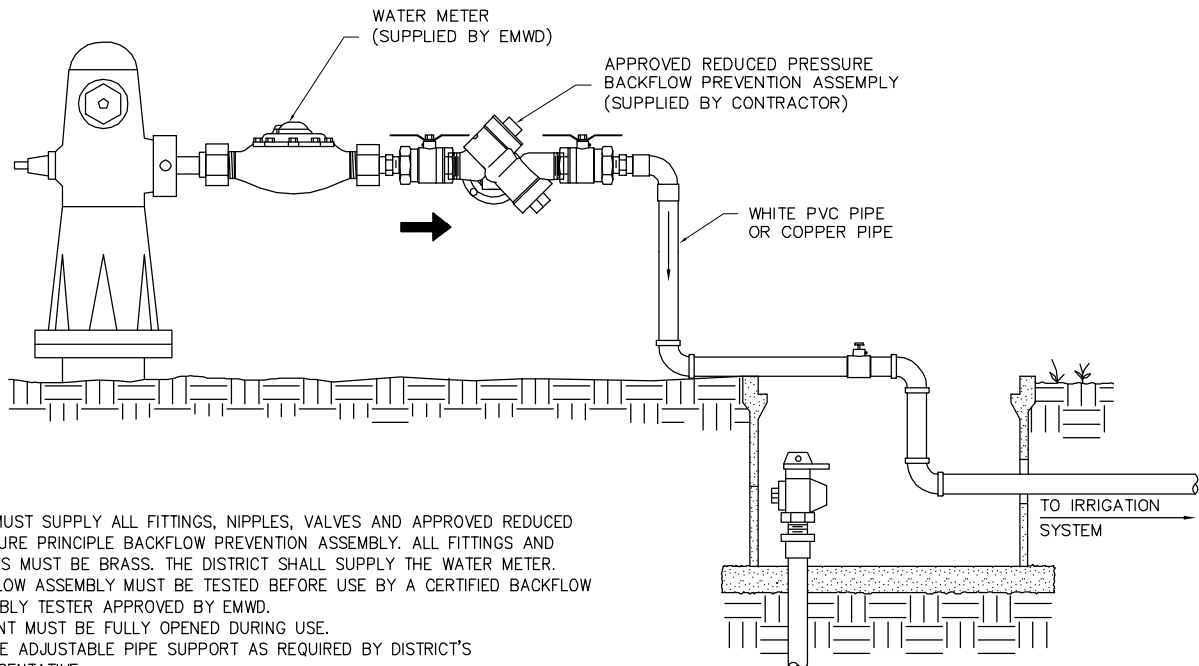


CITY OF PERRIS

DEVELOPMENT SERVICES DEPARTMENT
PLANNING DIVISION

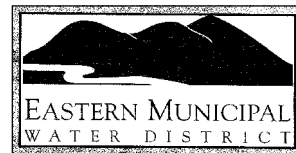
135 NORTH "D" STREET, PERRIS, CA. 92570-2200
TEL: (951) 943-5003 FAX(951) 943-8379

RECYCLED WATER DETAIL



NOTES:

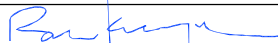
- 1) USER MUST SUPPLY ALL FITTINGS, NIPPLES, VALVES AND APPROVED REDUCED PRESSURE PRINCIPLE BACKFLOW PREVENTION ASSEMBLY. ALL FITTINGS AND NIPPLES MUST BE BRASS. THE DISTRICT SHALL SUPPLY THE WATER METER.
- 2) BACKFLOW ASSEMBLY MUST BE TESTED BEFORE USE BY A CERTIFIED BACKFLOW ASSEMBLY TESTER APPROVED BY EMWD.
- 3) HYDRANT MUST BE FULLY OPENED DURING USE.
- 4) PROVIDE ADJUSTABLE PIPE SUPPORT AS REQUIRED BY DISTRICT'S REPRESENTATIVE.
- 5) PRESSURE REGULATOR, IF NEEDED, SHALL BE INSTALLED DOWNSTREAM OF BACKFLOW PREVENTOR ASSEMBLY. USE COPPER PIPE.



951-928-3777

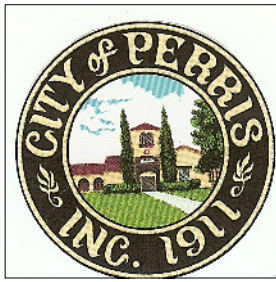
3/08

CITY OF PERRIS
CITY LANDSCAPE ARCHITECT


RON KAMMEIER

EMWD TEMPORARY HI-LINE POTABLE
WATER SERVICE CONNECTION

R-5

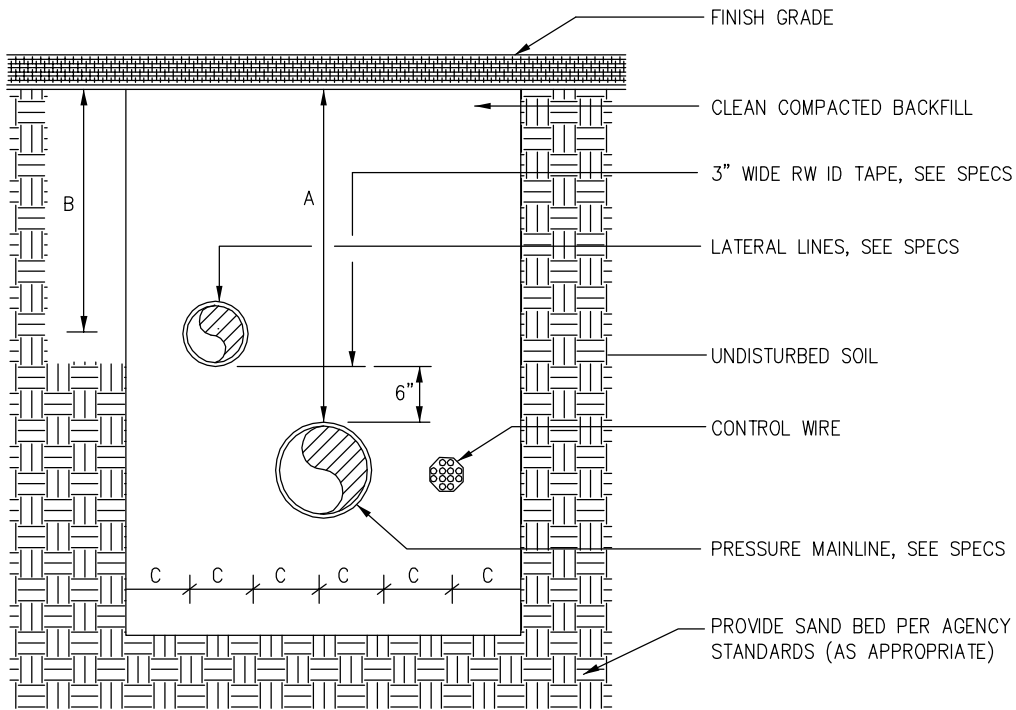


CITY OF PERRIS

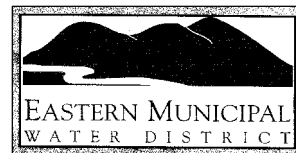
DEVELOPMENT SERVICES DEPARTMENT
PLANNING DIVISION

135 NORTH "D" STREET, PERRIS, CA, 92570-2200
TEL: (951) 943-5003 FAX(951) 943-8379

RECYCLED WATER DETAIL



| DIMENSION | A | B | C |
|----------------|-----|-----|----|
| 1/2" TO 2 1/2" | 18" | 12" | 6" |
| 3" TO 4" | 24" | X | 6" |
| 6" | 36" | X | 6" |



951-928-3777

3/08

CITY OF PERRIS
CITY LANDSCAPE ARCHITECT

Ron Kammeier
RON KAMMEYER

EMWD TRENCH DETAIL

R-6